



TULSA  PARKS

# LET'S TALK TULSA PARKS

Virtual Community Meeting with District 3 | Tuesday, October 6, 2020



# INTRODUCTIONS

TULSA  PARKS





# MEETING GOALS

- Provide background information, data & context to help us make informed decisions
- Gather feedback & input to help us prioritize funds & projects
- Identify gaps, issues, ideas & opportunities

# MEETING PROTOCOLS

- Muting & talking
- Questions & comments
- “ELMO” & follow-up
- Words & intentions
- Community mindset





# AGENDA

- Overview of community & district parks & recreation
- Capital funding & projects to repair & improve
- Small group discussions & open feedback
- Next steps

**CHAT/COMMENT POLL:**  
**“What Tulsa park do you or your household  
visit most often?”**

# TULSA'S FOUR PARK SYSTEMS



CITY PARKS



COUNTY PARKS



RIVER PARKS



PRIVATE PARKS





# TULSA PARKS AT A GLANCE



## 50+ Miles of Trails

Walking / Running Trails  
Equestrian trails at Mohawk Park



## 135 Parks

8,652 Acres of park land  
72 Picnic shelters  
22 Parks with Dedicated Gardens

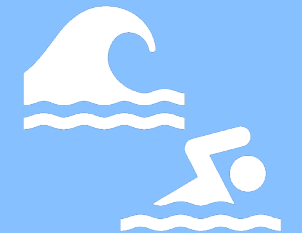
## Park Play Amenities

94 Playgrounds  
6 Parks with Adult Fitness Equipment  
104+ Sports Courts  
185 Sports Fields



## Aquatic features

7 Park fishing ponds/lakes  
5 Pools  
31 Splash pads & water playgrounds



## 100 Full Time Parks Employees

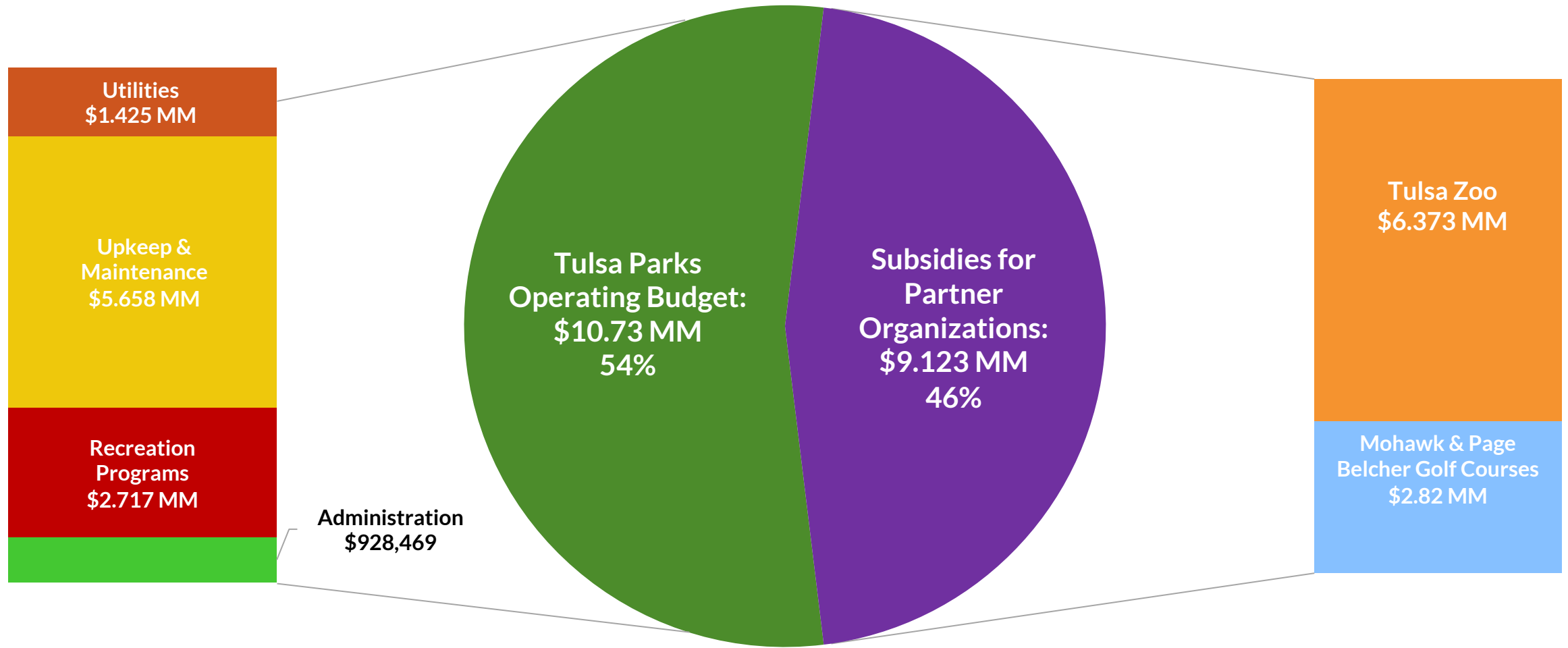
7 employees on our Administration Team  
33 employees supporting recreation programs  
60 employees supporting operations & maintenance



## Recreation Facilities & Programs

8 Community & Specialty Centers  
5 Indoor gymnasiums  
5+ fitness & weight rooms  
200+ recreation programs

# CURRENT BUDGET ALLOCATIONS: FY 20/21



**Total Budget: \$19.92 MM**

# THE DIFFERENCE & IMPACT TWO DECADES MAKE

## TULSA PARKS IN 2000

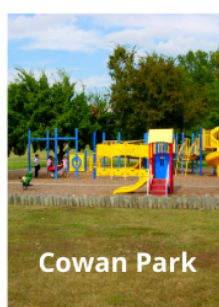
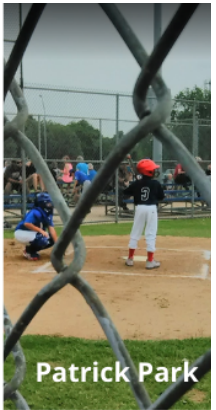
- 123 Parks
- 6,000 Acres of park land
- 15 Community centers
- 4 Theatres/Specialty Centers
- 494 recreational program offerings per season
- 306 full-time employees
- 248 part-time & contract employees

## TULSA PARKS IN 2020

- 135 Parks
- 8,652 Acres of park land
- 6 Community centers
- 2 Specialty Centers
- 214 recreational program offerings per season\*
- 100 full-time employees
- 68 part-time & contract employees

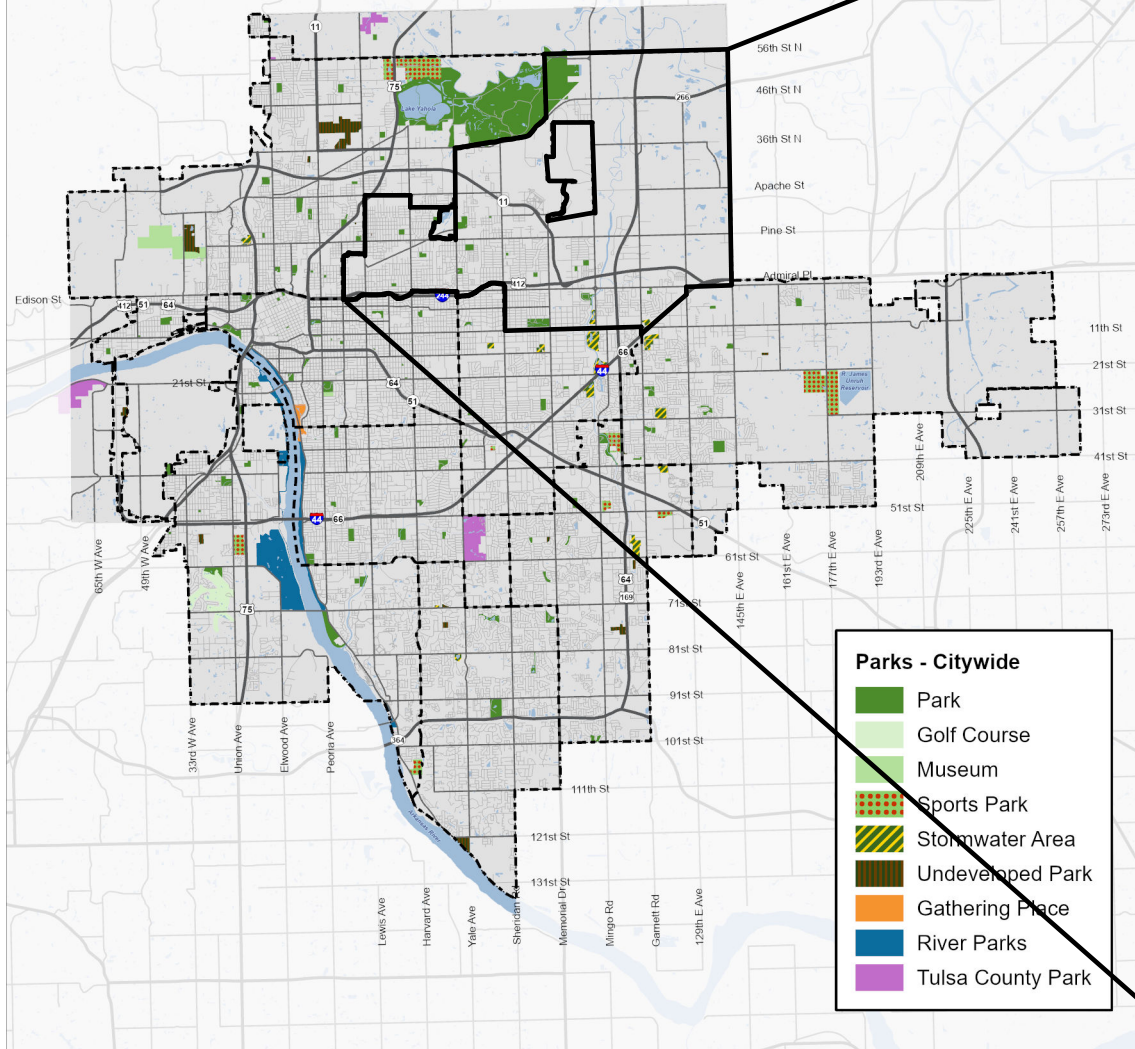
*\* This number is based on a typical season. Due to COVID-19, we have used 1999 vs. 2019 data here.*

# DISTRICT 3 PARK OVERVIEW



**CHAT/COMMENT POLL:  
“What Tulsa park is closest to where  
you live?”**

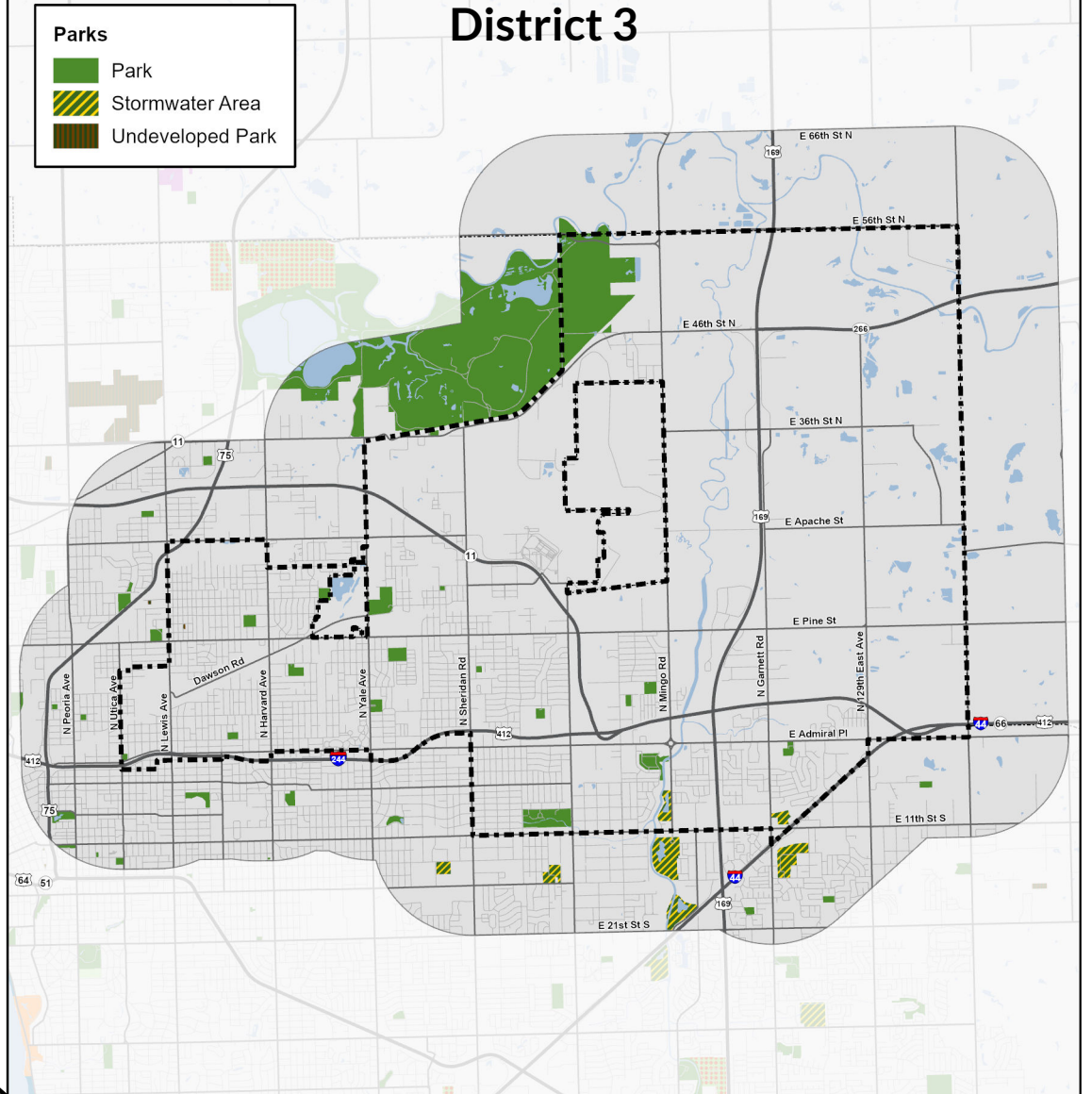
# City of Tulsa



## Parks - Citywide

- Park
- Golf Course
- Museum
- Sports Park
- Stormwater Area
- Undeveloped Park
- Gathering Place
- River Parks
- Tulsa County Park

# District 3



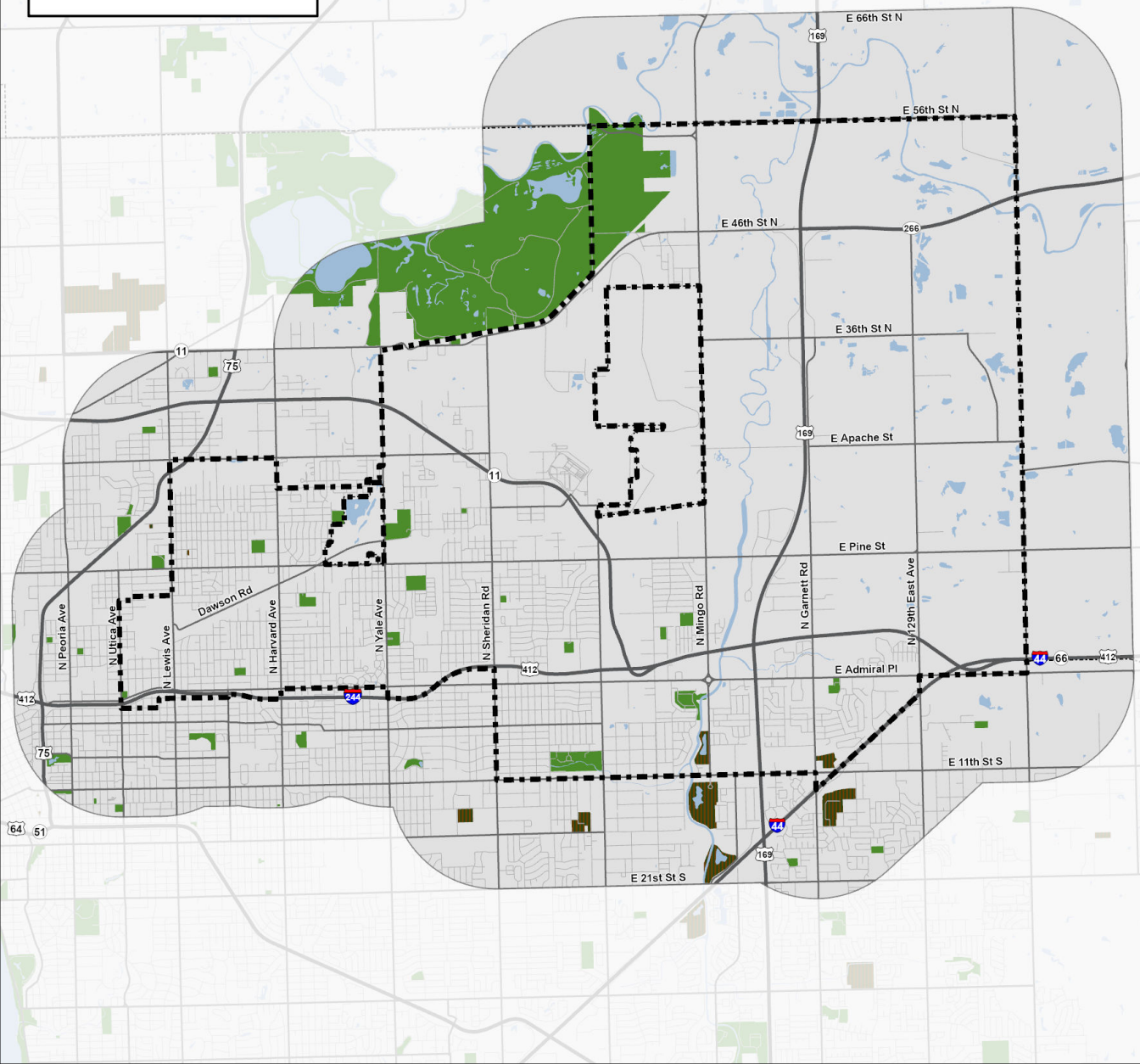
## Parks

- Park
- Stormwater Area
- Undeveloped Park

**Types of Parks**

- Recreational Parks
- Undeveloped Parks

## District 3



# PARKS SERVING DISTRICT 3 (within 1 mile)

- 32 Developed recreational parks with amenities
- 6 areas of undeveloped park land

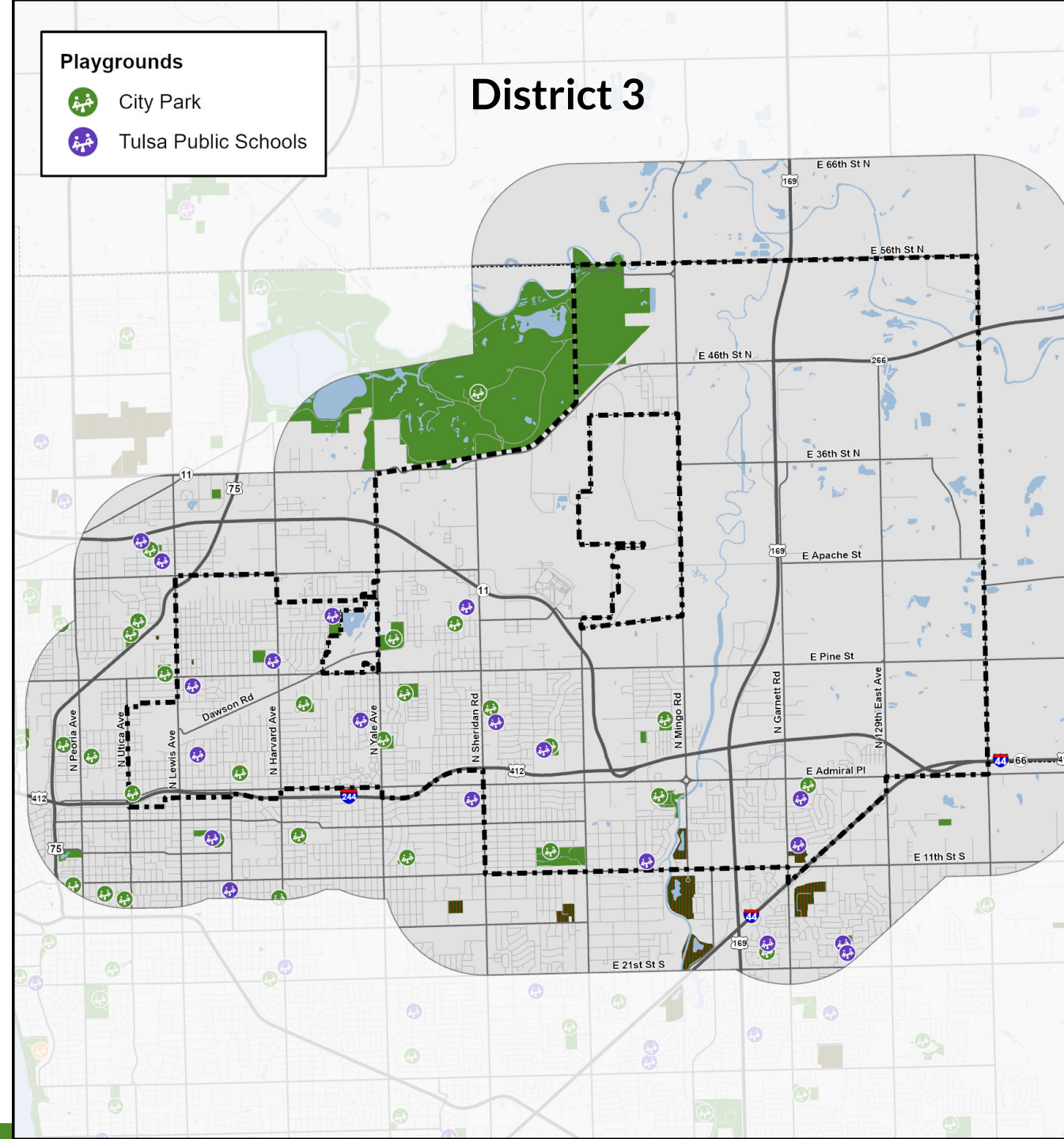
Parks Serving District 3	Within Council District	Play Amenities	Picnic Shelter / Area	Restrooms	Sport Courts (Tennis/Basketball)	Sports Fields	Water Play Amenities (Pools/Splash Pads/Water Playgrounds)	Trail or Walking Loop	Community Center
Adams Park   1627 N. Atlanta Pl	3								
Admiral Park   29 N. Victor Ave.	3	X	X		X		X		
Archer Park   2831 E. Archer St.	3	X	X	X	X	X	X		
Benton Park   1167 N. 66th E. Ave.	3	X				X			
Boeing Park   9234 E 2nd St	3	X	X	X	X	X		X	
Chittom Park   3121 E. Queen Pl.	3		X						
Clark Park   11440 E Admiral Pl	3	X	X		X	X		X	
Dawson Park   2035 N. Kingston Pl.	3	X				X	X		X
Jingle Feldman Park   8989 E. King St.	3		X			X			
Lantz Park   821 N Yale Ave	3	X				X			
Loving Park   9162 E. Latimer St.	3	X	X		X	X		X	
Maxwell Park   5251 E Newton St	3	X	X		X		X	X	
McClure Park   7440 E 7th St	3	X	X	X	X	X	X	X	X
Norvell Park   722 N 77th E Ave	3	X			X	X			
Patrick Park   5123 E. Dawson Rd	3	X		X		X			
Sequoyah Park   3540 E. Newton St.	3	X				X		X	
Ute Park   3540 E. Newton St.	3				X	X		X	



Parks Within 1 Mile Serving District 3	Within Council District	Play Amenities	Picnic Shelter / Area	Restrooms	Sport Courts (Tennis/Basketball)	Sports Fields	Water Play Amenities (Pools/Splash Pads/Water Playgrounds)	Trail or Walking Loop	Community Center
Braden Park   5036 E 7 <sup>th</sup> St	5	X	X		X	X	X	X	
Bullette Park  1001 E. King St	1	X	X		X			X	
Centennial Park   1028 E. 6th St.	1			X				X	X
Cowan Park   10901 E 19 <sup>th</sup> St	5	X			X	X			
Crutchfield Park   1345 E. Independence Ave.	1	X	X		X	X	X		
Franklin Park   1818 E. Virgin St.	1	X	X		X	X		X	
H.B. Johnson Park   1714 123 <sup>rd</sup> E Ave	6	X	X		X			X	
Kendall Whittier Park   2645 E. 5th. St.	4	X	X	X	X		X	X	
Lloyd Park   2121 E. 29th St. North	1	X	X		X	X			
Mini Park 1   2118 E. Ute St.	1								
Mohawk Park   5701 E. 36th St. North	1	X	X	X		X	X	X	X
Springdale Park   2223 E. Pine St.	1	X	X			X	X	X	
Turner Park   3503 E 5 <sup>th</sup> Pl	4	X	X			X		X	
Wheeling Park   2209 N. Wheeling Ave.	1	X	X				X		
Wright Park   437 S. 137th E. Ave	6					X			
Redbud Valley   16150 Redbud Dr.	N/A		X	X				X	X

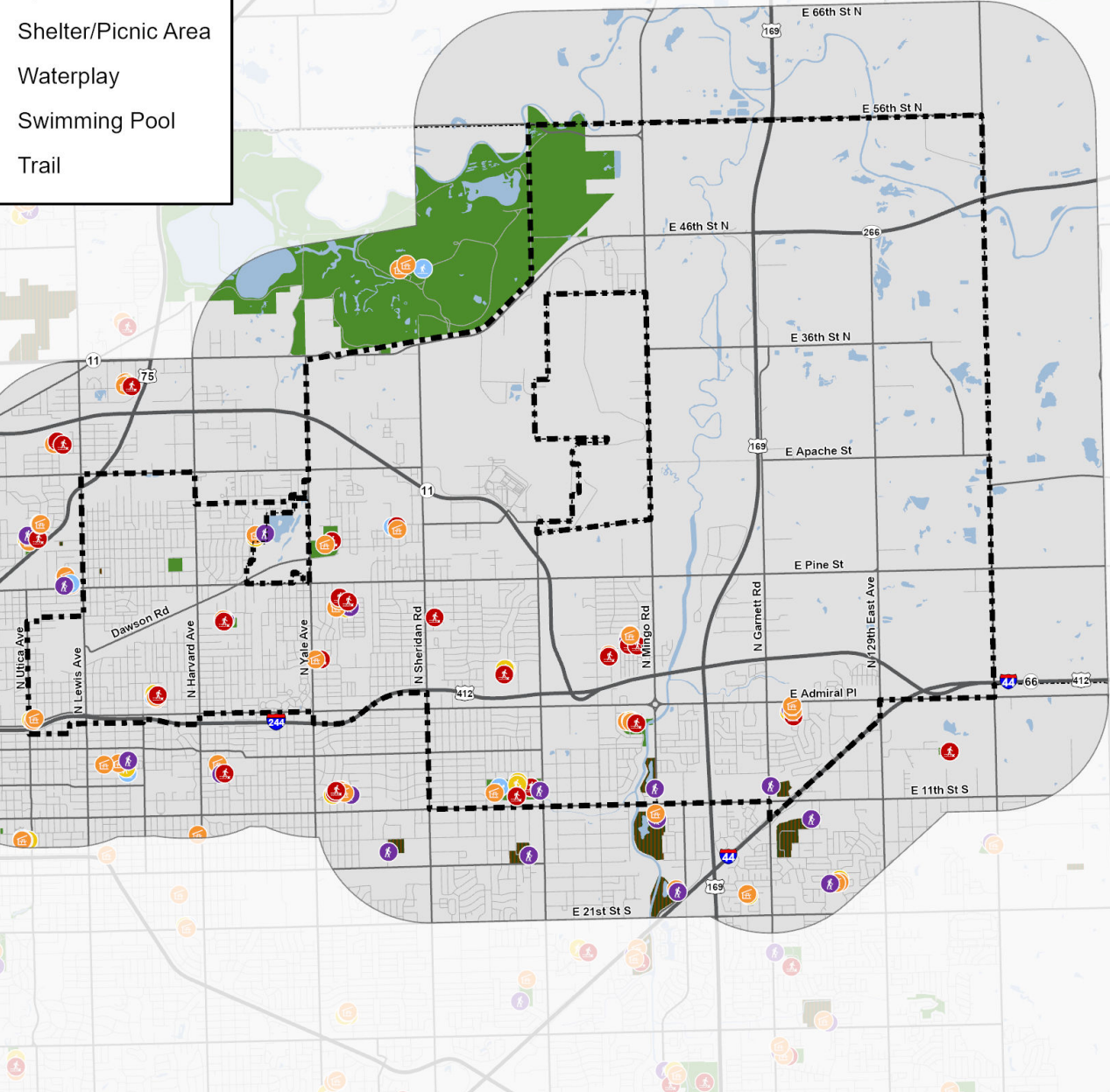
# PLAYGROUNDS SERVING DISTRICT 3 (within 1 mile)

- 25 City park playgrounds
- 19 TPS public access playgrounds



- Amenities**
- Sports Field
  - Sports Court
  - Shelter/Picnic Area
  - Waterplay
  - Swimming Pool
  - Trail

# District 3



# PARK AMENITIES SERVING DISTRICT 3 (within 1 mile)

- 22 parks with sports fields (soccer, baseball, and/or football)
- 17 parks with sports courts (tennis, pickleball and/or basketball)
- 22 parks with picnic shelters and/or areas (table or grill)
- 11 parks with water play amenities (pools, splash pads and/or water playgrounds)
- 16 parks with trails and/or walking loops

## **ZOOM SNAP POLL:**

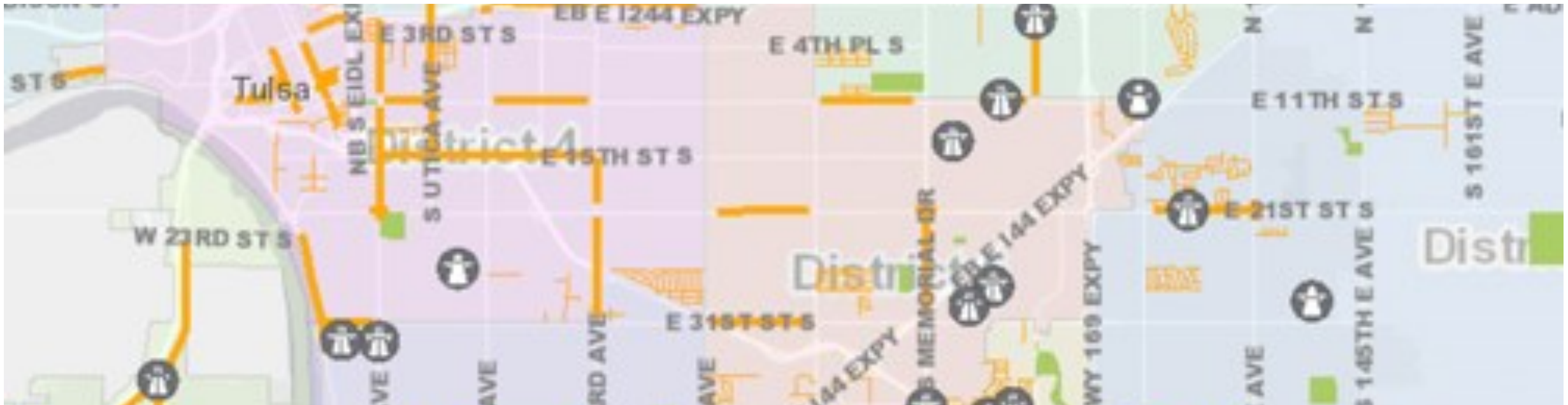
**What surprised you the most from the district overview we just went through?**

- The number of parks serving District 3
- The different types of parks and/or park management systems
  - The number and/or locations of playgrounds
  - The number and/or locations of park amenities
  - Something else
- None of it surprised me

# BREAK & AUDIENCE QUESTIONS



# CAPITAL FUNDING & PROJECTS



# CAPITAL FUNDING PACKAGES & TULSA PARKS ALLOCATIONS

In 2013, Tulsans approved \$918.7 million in funding for City improvements projects. In 2019, Tulsans renewed the package with an additional \$639 million.

\$30 million of the additional funding is allocated to Tulsa Parks for dedicated project, deferred maintenance repairs and additional improvements.



Funding Packages	Funding Allocated to Tulsa Parks
Vision Tulsa	\$7.1 MM
Improve Our Tulsa	\$34.94 MM
Improve Our Tulsa - 2019 Renewal	\$30 MM
Other Capital Funding	\$1.98 MM

# 2014 Improve Our Tulsa (IOT1) Funding & Projects

As part of the initial Improve Our Tulsa funding package, Tulsa Parks was allocated \$34.94 MM for the following projects:

<b>Parks: \$1.975 MM</b>	<b>Playgrounds: \$7.3 MM</b>	<b>Restrooms: \$400,000</b>	<b>Pools: \$13.11 MM</b>
<ul style="list-style-type: none"><li>• Cousins Park renovations, including:<ul style="list-style-type: none"><li>• New Pioneer Village complete with historic buildings, trails, restrooms and infrastructure.</li></ul></li></ul>	<ul style="list-style-type: none"><li>• 4 playgrounds completed</li><li>• 4 playgrounds currently in construction phase</li><li>• 15 playgrounds on hold</li></ul>	<ul style="list-style-type: none"><li>• Restrooms Improvements at Hunter Park, including:<ul style="list-style-type: none"><li>• Renovate and expand existing restroom facility.</li></ul></li></ul>	<ul style="list-style-type: none"><li>• 3 pools completed</li><li>• Reed pool currently in construction phase</li><li>• Berry Pool is next</li></ul>



# IMPROVE OUR TULSA PARKS PROJECTS

■ Park Facility Repairs & Improvements

■ Fred Johnson Park Rehabilitation

■ Ben Hill Park Improvements

■ Mohawk Park Repairs & Renovation

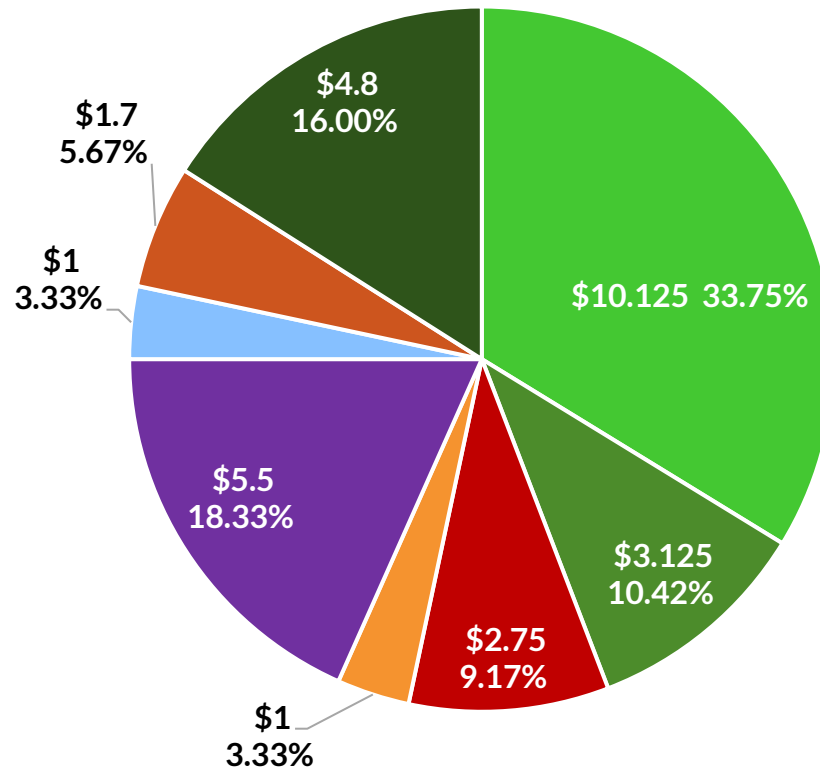
■ Park Play Amenity Repairs, Upgrades & Additions

■ Parking Lot Repairs

■ Swan Lake

■ Tennis Court Repairs, Repurposing & Replacement

Funding Allocations



Represented in Millions

## Dedicated Project Funding

- Ben Hill Park Improvements
- Fred Johnson Park Rehabilitation
- Mohawk Park Repairs & Renovation
- Parking Lot Repairs
- Swan Lake

## Broad Category Project Funding

- Park Facility Repairs & Improvements
- Park Play Amenity Repairs, Upgrades and/or Additions
- Sports Court Repairs, Repurposing and/or Replacement

Deferred Facility Maintenance Category	One Time Repair Cost
HVAC	\$2,336,754
Roofs	\$5,477,316
Security Updates	\$918,288
<b>TOTAL COST</b>	<b>\$8.732 MM</b>
Other Facility Maintenance Category	Annual Repair & Maintenance Costs
Bathroom Fixtures	\$2,000
Ceilings	\$45,000
Doors	\$6,250
Electrical	\$35,000
Flooring	\$72,000
Shelters	\$50,000
Wood/Millwork	\$1,000
<b>TOTAL COST</b>	<b>\$252,350 per year</b>
<b>GRAND TOTAL COST AFTER 6 YEARS</b>	<b>\$10.246 MM</b>

# FACILITY REPAIRS & IMPROVEMENTS

- \$8.732 MM of the IOT money is needed to make essential safety repairs to roofs, HVAC equipment, and security updates.
- To complete the other annual repairs and maintenance, we would surpass the \$10.125 MM allocated from IOT2 by ~\$121,000



# OUTDOOR PLAY:

## REPAIRS, REPLACEMENT & ADDITIONS

- \$1.19MM is already allocated to replace 1 playground and 3 water playgrounds that are no longer safe.
- 13 playgrounds are in poor condition and could be either repaired or replaced. Depending on which, it would cost \$1.95-\$3.03 MM total.
- This leaves ~\$1.165-\$3.025 MM available to:
  - Repair or replace other play amenities
  - Replace a play amenity with something else that better serves the community
  - Install additional park amenities

Play Amenities	Typical Repair Cost	Typical Replacement Cost
Playground	\$100,000	\$200,000
Splash Pad or Water Playground	\$120,000	\$500,000
Additional Amenities	Typical Construction Cost	Details
Tennis Court	\$345,000	Fenced double court with lights
Bathrooms	\$225,000	Includes new utilities
Half Mile Trail	\$110,000	6ft. wide, paved asphalt
Swing Set	\$55,800	4 swings
Lighting Around Playgrounds	\$42,000	6 solar lights
Adult Fitness Equipment	\$95,000	
Picnic Area/Shelter	\$27,500	Includes small shelter, picnic table & grill
Community Garden	\$6,000	Excludes maintenance or staff costs

## **ZOOM SNAP POLL:**

**What option(s) would you want to see for the park playground(s) closest to you or your household?**

- The current playground is fine as is
  - Repair current playground
  - Replace with a similar playground
  - Upgrade to a different playground
- Replace current playground with a different amenity
- Add an additional amenity to the park
- Something else

Parks serving District 3 with Sports Courts	Court Repair Type	Cost to Repair
Admiral Park	Basketball	Resurfaced in 2018
Archer Park	Basketball	Resurfaced in 2018
B.C. Franklin Park	Basketball	New in 2018
Braden Park	Tennis	\$85,980
Boeing Park	Basketball	\$10,000
Bullette Park	Basketball	\$18,200
Clark Park	Multiuse	Resurfaced in 2015
Cowan Park	Tennis	\$36,580
Kendall Whittier Park	Multiuse	New in 2018
Lloyd Park	Tennis Basketball	\$42,990 \$39,000
Loving Park	Tennis Basketball	\$42,990 \$38,000
Maxwell Park	Multiuse	Resurfaced in 2018
McClure Park	Tennis Basketball	\$73,160 \$26,600
Norvell Park	Tennis Basketball	\$18,290 \$39,200
Ute Park	Basketball	\$77,000
<b>TOTAL COST</b>		<b>\$547,999</b>

# SPORTS COURTS:

## REPAIRS, REPURPOSING & REPLACEMENT

Typical costs of repairs or alternatives based on a 2-court tennis facility:

- Convert to an adult fitness course: \$185,000
- To Repair/Renovation: ranges from \$36,600 to \$86,000 depending on concrete or asphalt courts (asphalt being more expensive to repair)
- Convert to multi-sport court: \$83,000
- Remove to provide green space: \$40,000
- Convert to Community Garden: ~\$6,000

## **ZOOM SNAP POLL:**

**What option(s) would you want to see for the park tennis court closest to you or your household?**

- The current tennis court(s) is/are fine as is
  - Repair the tennis court(s)
  - Replace the tennis court(s)
- Convert the area into another park amenity
- Remove the tennis court(s) to create more green space
  - Add additional court(s)
  - Something else

# BREAK & AUDIENCE QUESTIONS



# SMALL GROUP DISCUSSIONS





# WHAT DO YOU WANT TO TALK ABOUT?



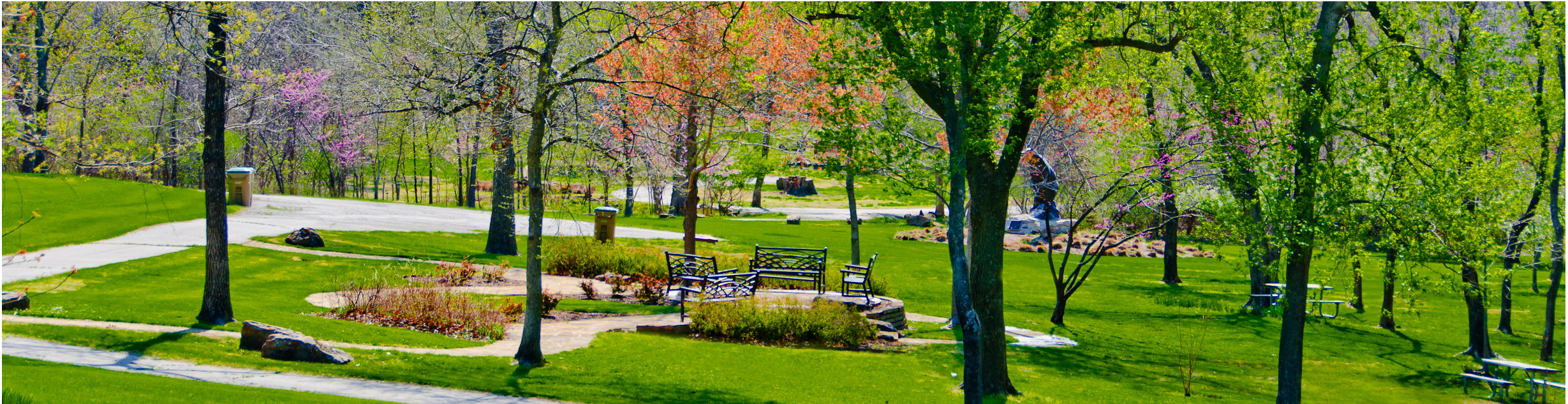
# WHILE WE'RE IN BREAKOUT ROOMS, YOU CAN STILL GIVE YOUR INPUT & FEEDBACK

- Take our public survey using this QR code
- Email [letstalktulsaparks@cityoftulsa.org](mailto:letstalktulsaparks@cityoftulsa.org)
- Call **596-PARK (7275)** and select option 4 to leave a voicemail
- Post your questions, input, feedback or ideas in the comments of this video

TULSA  PARKS



# FINAL FEEDBACK & AUDIENCE QUESTIONS





# NEXT STEPS

## FOR YOU:

- Take our public survey at [www.cityoftulsa.org/letstalktulsaparks](http://www.cityoftulsa.org/letstalktulsaparks)
- Call 596-PARK (7275) or email your general feedback & ideas to [letstalktulsaparks@cityoftulsa.org](mailto:letstalktulsaparks@cityoftulsa.org)

## FOR TULSA PARKS:

- Complete virtual community meetings for each City Council district
- Publish public feedback report
- Recommend prioritized Improve Our Tulsa projects & funding to City Council
- Update Tulsa Parks master plan