



TULSA PARKS

Parks and Recreation Master Plan Open Public Forum

The best ways to participate:

- Polls
- Chat
- Live Q&A



We will begin in a few minutes.



TULSA PARKS



Parks and Recreation Master Plan Update And Cost Recovery Study

4 Stages of Public Engagement



Strategic Kick-Off

- Critical Success Factors
- Key focus areas
- Meeting schedule
- Identification of Key Stakeholders
- Gathering of All Relevant Documents
- Briefing with Decision Makers



1 Information Gathering

• Needs Assessment

- Staff
- Stakeholders
- Public Meetings
- Focus groups
- Interviews
- Surveys
- Online engagement



• Inventory

- All Assets
- All Program Locations
- Other Providers

• Level of Service Analysis

- GIS component-based mapping
- Quality, Quantity, Functionality

• Community Profile

- Historical & Planning Context
- Demographics

• Trends

2 Findings & Visioning

• Presentation/Feedback Sessions

- Staff
- Stakeholders
- Decision Makers

• What We Have Discovered

• Key Issues Matrix

• Key Ideas and Themes for Improvement

• Analysis

- Programming
- Operations
- Maintenance
- Marketing & Communications
- Financial Resources



3 Draft Recommendations

• Summary Findings

• Strategies

- Long-Term Vision
- Short-Term Action



• Implications

- Financial
- Operational
- Maintenance

• Recommendations

• Action Plan

- Tasks
- Timing
- Costs



• Review & Revisions



4 Final Plan

• Review

- Staff
- Public
- Decision Maker

• Distribute/Post



Implementation

• Action Plan

- Annual Review



GREENPLAY LLC

The Leading Edge in Parks, Recreation,
And Open Space Consulting

Typically our Strategic/Master Plans include a 5-year focus on operations, 10-year focus on capital, and 20 year strategic vision. Other elements and tools are added as needed for a community-specific plan.

Information Gathering Process

November/December

- Inventory/Level of Service Analysis
- Stakeholder Meetings
- Executive Team Meetings
- Staff Meetings
- Open Public Meeting

January 2021

- Community Survey
 - Random Sample
 - Open Link





QUESTION ONE

What are the strengths of the City related to Parks, Recreation, Trails, Facilities, and Activities that should continue?

Quantity and distribution of parks

Trail network

Oxley Nature Center/Redbud Preserve

Free and affordable programs

Park Staff repour with community

Department values community input

Amount of park and open space acres

Able to do a lot with a little (budget/staff)

Public/Private partnerships

Department leadership

Physical assets of parks

Recent expansion of the trail system

Diversity of parks

Beauty of the park system

Department staff

Youth programs

Programs and staff at Reed Park

School Partnerships

Recent park activation goals

Inclusive to minority groups

Linnaeus teaching garden

Variety of programs

Dance programs

Online resources for educators



**QUESTION
2**

Conversely, what are the weaknesses that need addressing through the Master Plan update?

Deferred maintenance of parks, trails, and buildings

Program equity and distribution

Access to parks (LOS)

Security and lighting in parks

Reduced staff and hours at Oxley

Cancellation of school tours at Oxley

Department is underfunded

Not enough staff to handle routine park maintenance

Bike amenities near trails

Wayfinding signs on trails

Park amenities in neighborhood parks

Programs innovation

Connectivity of parks and trails

Department is under valued by decision makers

Transfer of knowledge and documentation between staff

Staff is hesitant to take on new task or amenities that could increase workload

Some playground equipment is outdated

Distribution of park amenities

Condition and maintenance of golf course

Splashpads are outdated and many need repair

Amount of mulch and gravel in park system

Communication with the community

Linnaeus Garden Center is underutilized

Loss of amenities at Owen Park

Lack of investment in park system

Loss of swimming pools

Golf fees are below market rate

No dedicated grant writer in the Department

Distribution of recreation centers

Unused greenspace (donated pocket parks)

Vandalism

Closure of the Rodeo grounds and concert grounds at Mohawk Park

Department branding and marketing of programs

Facility reservations system

Challenges with having the Soccer Complex unlocked

Communication with sub-contractors on park mow schedule

Hard to identify who operates a park

Most Restrooms are locked or not properly maintained

Condition of paths and trails

Parks not equipped with water fountains/filling stations

Not enough parking at several parks

Maintenance of tree canopy



QUESTION 3

What additional programming activities do you feel should be offered by Tulsa Parks that are currently not available?

Greater distribution and access to programs is needed

More bike tune-up and safety days

Outdoor programming in parks

Physical fitness opportunities

Master Gardner program

Youth trips

Senior programs

More Learn to Swim programs

Academic enrichment programs

More coordination and collaboration with neighboring agencies on program delivery

More community events in the parks (art/music/popup shops)

Pollinator gardens and programs

After school program

More consistency in recreation programming across the City

Pickleball

Bilingual programs

Art in the Park program



QUESTION
4

What improvements are needed at existing Parks, Trails, Facilities, and Open Space Parks owned or operated by the City?

Ponds at Owen Park and Centennial Park

Parks and infrastructure through the systems require updates

ADA access

Benches along trails and paths

Bilingual signage

Carl Smith Sports Complex

Rock stairs, erosion and flooding at Zink Park

Fairways, sand traps and paths at Golf Courses

Trails (erosion)

Repurpose Tennis Courts (Bike garden/basketball courts)

Playground at Terrace Park

Paths near Mansion at Garden Center

Remote shelters at Oxley Nature Center

Shade and water at dog parks

Shelter and electricity at Darlington Park

Water fountains or filling station are needed in parks

More native plants

More amenities at Hunter Park

Parking at Lacy Park

Many improvements are needed at Chamberlin Park and Malone Recreation Center

Parking at Challenger Seven Park

Closed Recreation Centers should be opened

Owen Park needs to be renovated

Many improvements are needed at Reed Park and Recreation Center

Playground at Whiteside Park

Electrical in Parks

Park beautification

Innovative playground equipment

Mingo trail needs a controlled burn and creek needs to be cleaned

Redbud Preserve needs many improvements

Timer lights on basketball courts

Fenced tot lots

Quantity and quality of parking lots

Trail connectivity

Enhancement of Pocket Parks

Monarch waystations

Instruments in parks for play



**QUESTION
5**

What new facilities/amenities
would you like to see available?

Splash pad at Turner Park and Darlington Park

Parks designed for older youth

Pump Track

Skateboard Park

A Recreation Center or community gathering place in each district of the City

More cycling opportunities

Equestrian Center at the Mohawk Park

Outdoor performance spaces (amphitheater or performance pads along river)

Loop trails in park system

Trail to connect North Tulsa to Flat Rock Creek

More splash pads

Pollinator Gardens

More aquatics opportunities

Wading Pool

Walking trail at Darlington Park

Additional Community Gardens

Indoor Soccer

More shade and gathering spaces in parks

Climbing wall

Park shelters at Chamberlain Park and Woodward Park

Inclusive playground

Restrooms and walking path at Reed Park

Senior Center

Running track

Recreation Center or Clubhouse in East Tulsa

More basketball courts

Maintain natural spaces at a higher level

Sports courts

Pickleball courts/complex

Ninja course

Dog parks

A park within a 1/2 mile of all residents

Use parks for infill



QUESTION 6

Who are the key partners and stakeholders in the community with regards to assisting with the Master Plan?

Private recreation providers

Oklahoma Wildlife Conservation

Equestrian groups

Oxley Foundation

Tulsa County Parks

GKFF (Landscape Architect)

OSU

Girl Scouts/Boy Scouts/Campfire

Tulsa Herb Society

Tulsa Public Schools

Union Public Schools

Jenks Public Schools

Tulsa City-County Library System

Southwood Garden Center

Williams Companies

Churches

Boys and Girls Club

Promotoras

Victory Church

Monarch Waystations

Tulsa Garden Club



**QUESTION
7**

Are there any portions of
Tulsa that are underserved?

Parks, amenities and a pool are needed in North Tulsa

Parks, programs and a pool are needed in East Tulsa

Parks are needed in the South-East near new medical facilities

Disabled population

Teens

Seniors

Hispanic population

Needs of Johnson Park community



QUESTION
8

What are the key issues and values that the City needs to consider?

Park safety and visibility

Racial inequality

Physical divisions within the City

Sustainability



**KEY
ISSUES**

Art and Culture

Performing Arts

Music

Small town feel with big city amenities

Beautiful natural amenities

Family friendly

Open space

Diversity



VALUES



QUESTION
9

What are the priorities that the City needs to consider?

Taking care of what we have

Equity

Sustainable and dedicated funding

Park safety and lighting

Pragmatism

Condition of Golf Courses

Health and wellness opportunities (trails/programs)

Livability

Trail connectivity

Public-Private Partnerships

Improved access to parks

Preserving the ponds

Park and building aesthetics

Inclusive playground and restrooms

Restrooms in parks

Safe places for youth

Maintaining a family focus

Internet in parks

A focus on education

Learn to Swim programs

Taking care of the low hanging fruit in parks within the first 3 years of plan

Making Oxley a destination location

The use of volunteers

Innovative playground equipment

The use of natural elements in park landscape

Nature play opportunities

Educational and wayfinding signage

Repurposing of unused sports facilities

Evaluation of park rules

Enforcement of no smoking in parks

Variety of park amenities

The development of signature parks

A tree canopy plan that goes beyond an inventory

Accessibility within parks

Marketing/branding of parks and programs

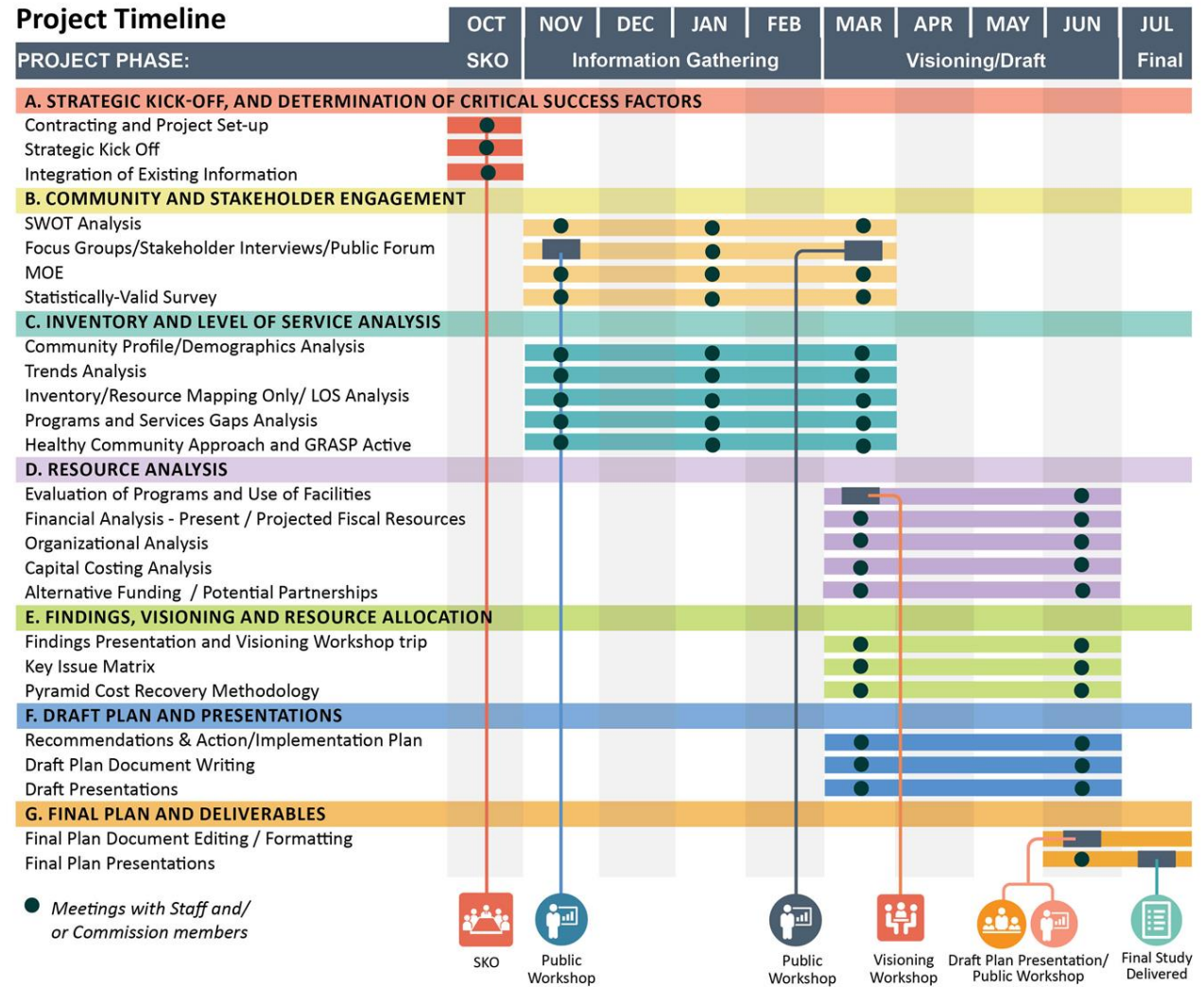
More robust website and social media presence

Maintain natural spaces at a higher level

Next Steps

January 2021

- Community Survey
 - Random Sample
 - Open Link





Other
comments,
suggestions,
and feedback?

Thank you for
your time!

GREENPLAY LLC

*The Leading Edge In Parks, Recreation
And Open Space Consulting*