

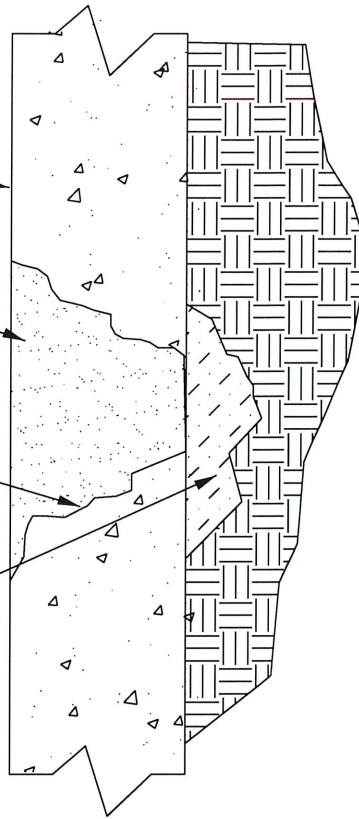
PATH NAME: /E1/PARTS/STD/DCN.STDS/413-PATCH-PLUG-LIFT-HOLE.DGN LFM 05/25/2012

INTERIOR SURFACE OF
MANHOLE WALL

QUICK-SETTING, HIGH EARLY
STRENGTH HYDRAULIC CEMENT
TO FILL HOLE CAVITY

ACYRL #60 BONDING AGENT
OR EQUAL TO ALL
INTERIOR SURFACES

FILL EXTERIOR VOID WITH
HYDRAULIC CEMENT OR
GROUT AS REQUIRED



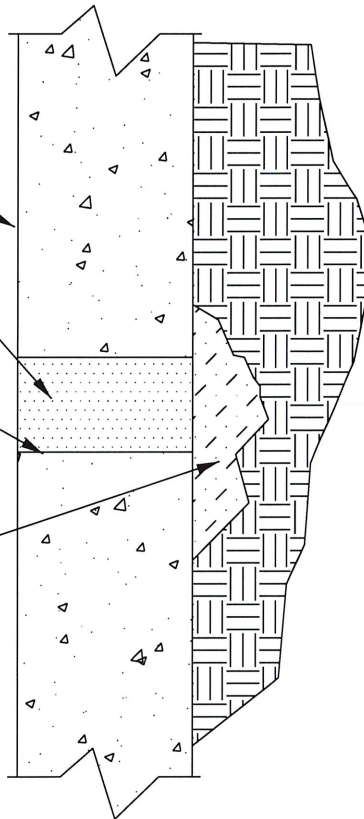
PATCH HOLE DETAIL

INTERIOR SURFACE OF
PRECAST MANHOLE WALL

QUICK-SETTING, HIGH EARLY
STRENGTH HYDRAULIC CEMENT
TO FILL LIFT HOLE CAVITY

ACYRL #60 BONDING AGENT
TO ALL INTERIOR SURFACES

FILL EXTERIOR VOID WITH
HYDRAULIC CEMENT OR
GROUT AS REQUIRED



PLUG LIFT HOLE DETAIL

PATCH HOLE AND
PLUG LIFT HOLE

CITY OF TULSA, OKLAHOMA
ENGINEERING SERVICES DEPARTMENT

DRAWN BY: R.M.O.
CHECKED BY: *HAB*
DATE: MARCH 2022

APPROVED
Kelley

NOT TO SCALE

STANDARD NO. 413