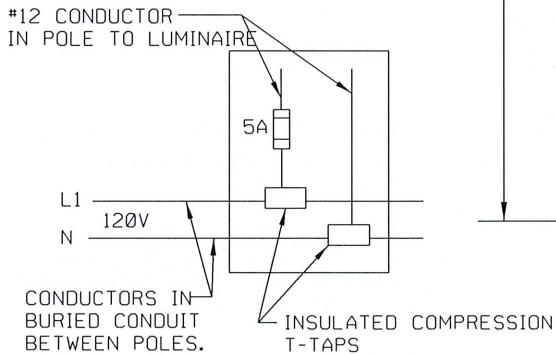
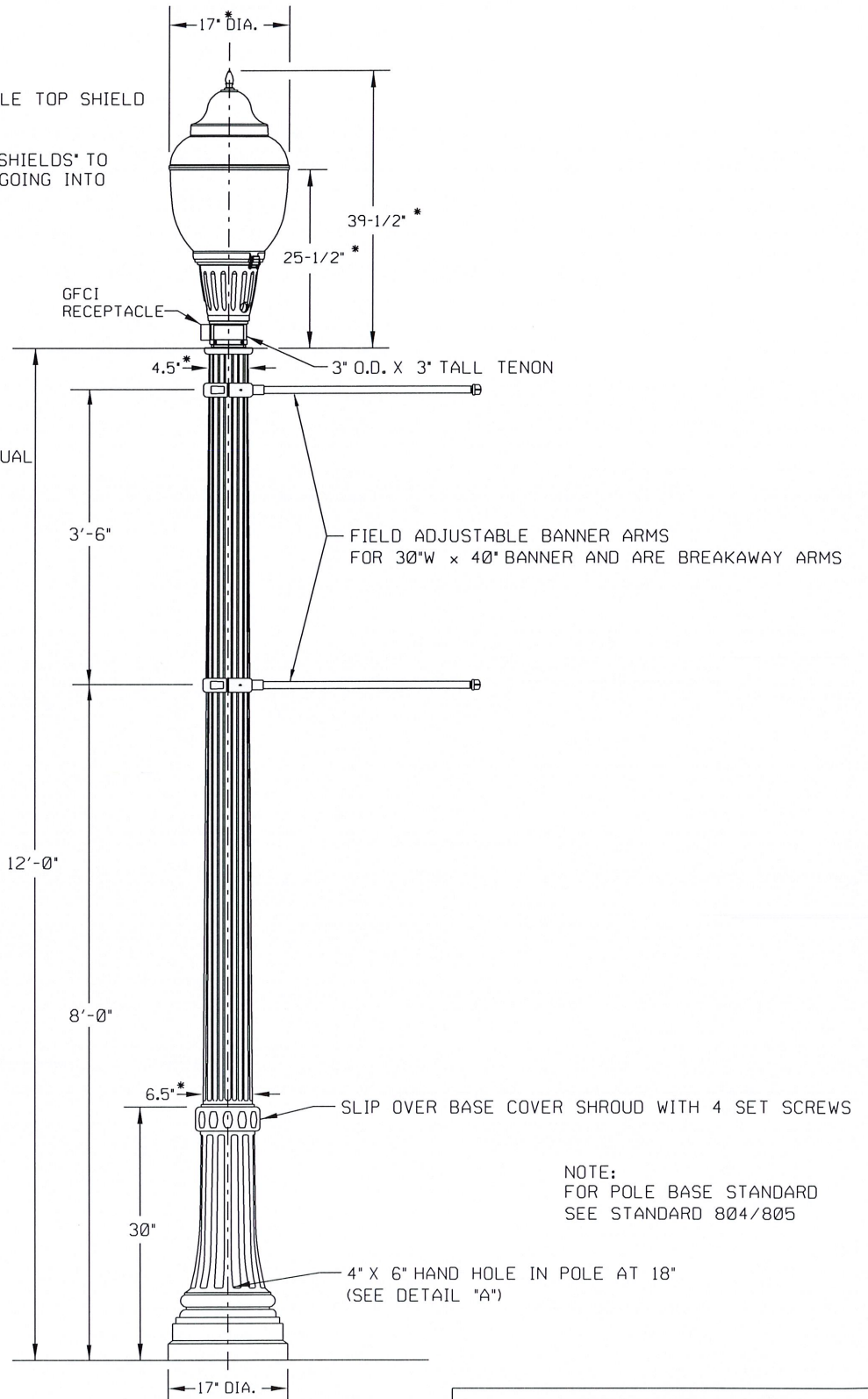


LUMINAIRE TO HAVE "DARK SKY" COMPATIBLE TOP SHIELD TO PREVENT UPWARD SPILL LIGHT.

WHERE REQUIRED, FACTORY MADE "HOUSE SHIELDS" TO BE INSTALLED TO PREVENT LIGHT FROM GOING INTO RESIDENCES AND BUSINESSES.

**POLE:**  
FLUTED BLACK FIBERGLASS (TAPERED)  
COMPOSITE POLE ON ANCHOR BASE OR EQUAL

\* DIMENSION TOLERANCE  
+/- 1" WHERE INDICATED



**HAND HOLE DETAIL "A"**  
SCALE: NONE

**POLE DETAIL**  
SCALE: NONE

NOTE:  
FOR POLE BASE STANDARD  
SEE STANDARD 804/805

STREET LIGHT STANDARD ACORN POLE AND FIXTURE	
CITY OF TULSA, OKLAHOMA ENGINEERING SERVICES DEPARTMENT	
DRAWN BY: R.M.O. CHECKED BY: <i>HHS</i> DATE: MARCH 2022	APPROVED <i>Kalder</i>
NOT TO SCALE	STANDARD NO. 800