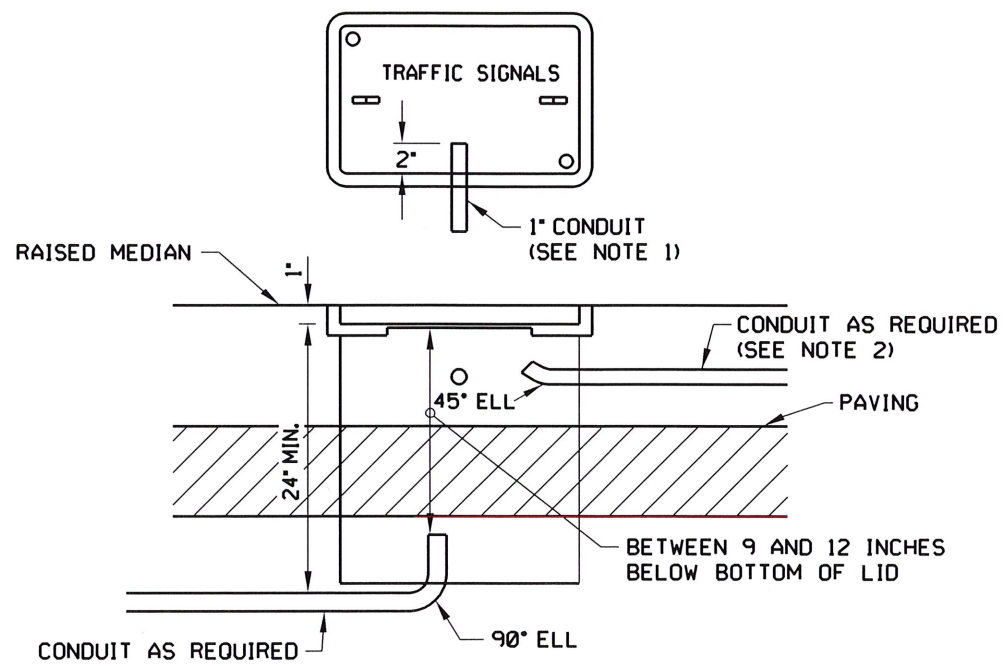
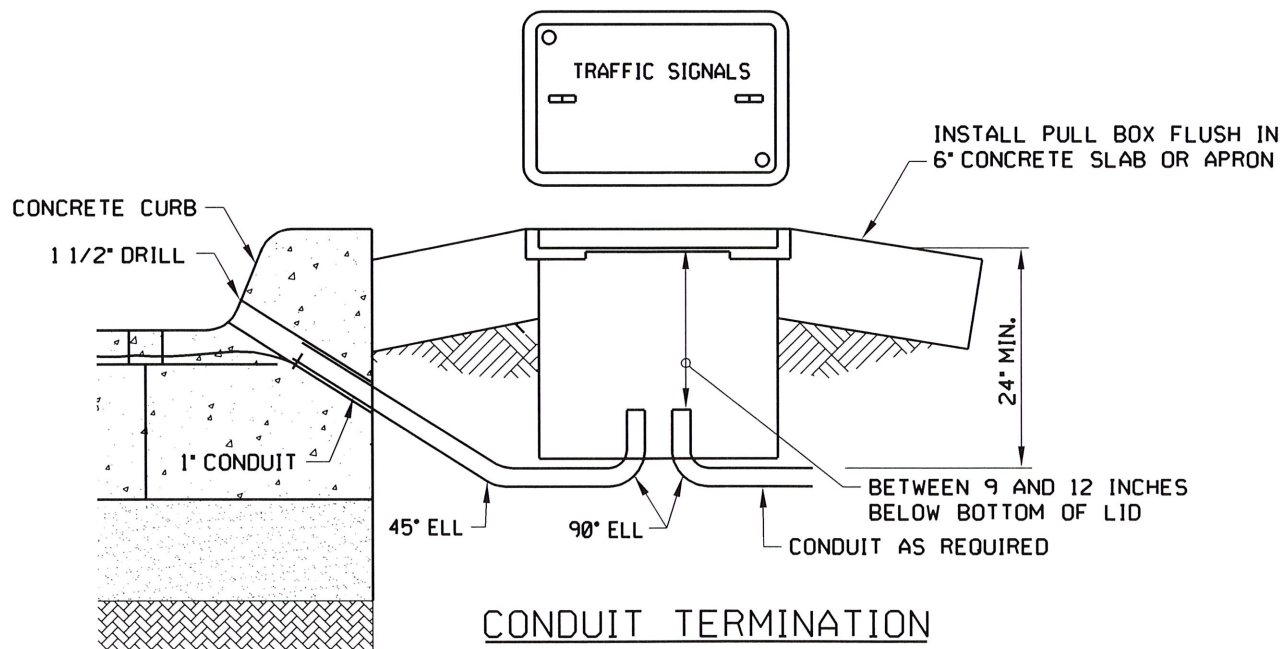


PATH NAME: /E1/PARTS/STD/DCN.STDS/602-conduit-inst.dgn RSB 04/14/2020



**CONDUIT TERMINATION
(IN ISLAND)**

ALL CONDUIT INSTALLATION SHALL BE IN ACCORDANCE WITH THE NATIONAL ELECTRIC CODE (NEC)

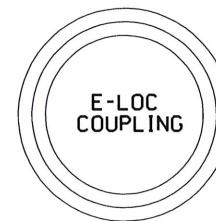
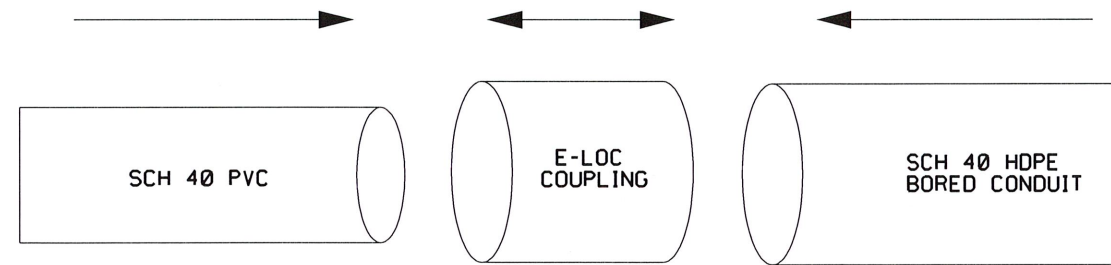
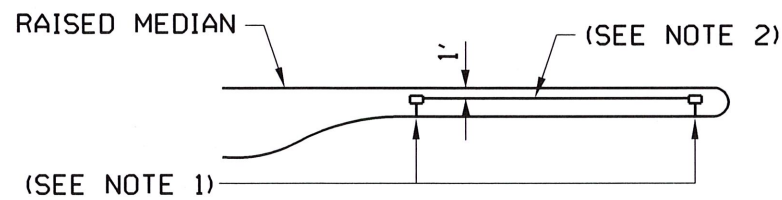


CONDUIT TERMINATION

EXAMPLE SHOWN IS FOR LOOP WIRE INSTALLATION FOR MORE INFORMATION SEE COT STANDARD DRAWINGS 604A AND 604B

NOTES:

- 1) DRILL OR POUR IN PLACE 1" CONDUIT FOR EACH LOOP DETECTOR SPACED 2 INCHES APART FOR LOOP WIRE. BACKFILL THE CONDUIT WITH ASPHALTIC JOINT SEALER (ONLY). COST TO BE INCLUDED IN LOOP WIRE. SEE COT SPECIFICATION 604 AND STANDARD DRAWINGS 604A AND 604B FOR MORE INFORMATION.
- 2) IF CONDUIT IS INSTALLED ON TOP OF SLAB SURFACE, IT SHALL BE ANCHORED OR STAKED EVERY 8 FEET TO PREVENT RISING (FLOATING) DURING RAISED MEDIAN FORMING. CONDUITS SHALL BE INSTALLED A MINIMUM OF 1' FROM ONE EDGE OF RAISED MEDIAN
- 3) ALL SCHEDULE 40 PVC CONDUIT ATTACHED TO SCHEDULE 40 HDPE BORED CONDUIT SHALL BE ATTACHED BY MEANS OF AN E-LOC COUPLING OR APPROVED EQUAL, SUITED FOR THIS PURPOSE. NORMAL PRIMER AND PVC CEMENT SHALL NOT BE USED.
- 4) REFERENCE STANDARD 601 FOR PULL BOX INSTALLATION. ALL PULL BOXES SHALL HAVE A CONCRETE APRON, UNLESS CONCRETE SIDEWALK IS POURED AROUND PULL BOXES.



(SEE NOTE 3)

REVISION	BY	DATE

CITY ENGINEER
[Signature]
CITY TRAFFIC ENGINEER

CITY OF TULSA, OKLAHOMA
ENGINEERING SERVICES DEPARTMENT

CONDUIT INSTALLATION

DATE: MARCH 2022

STD. 602