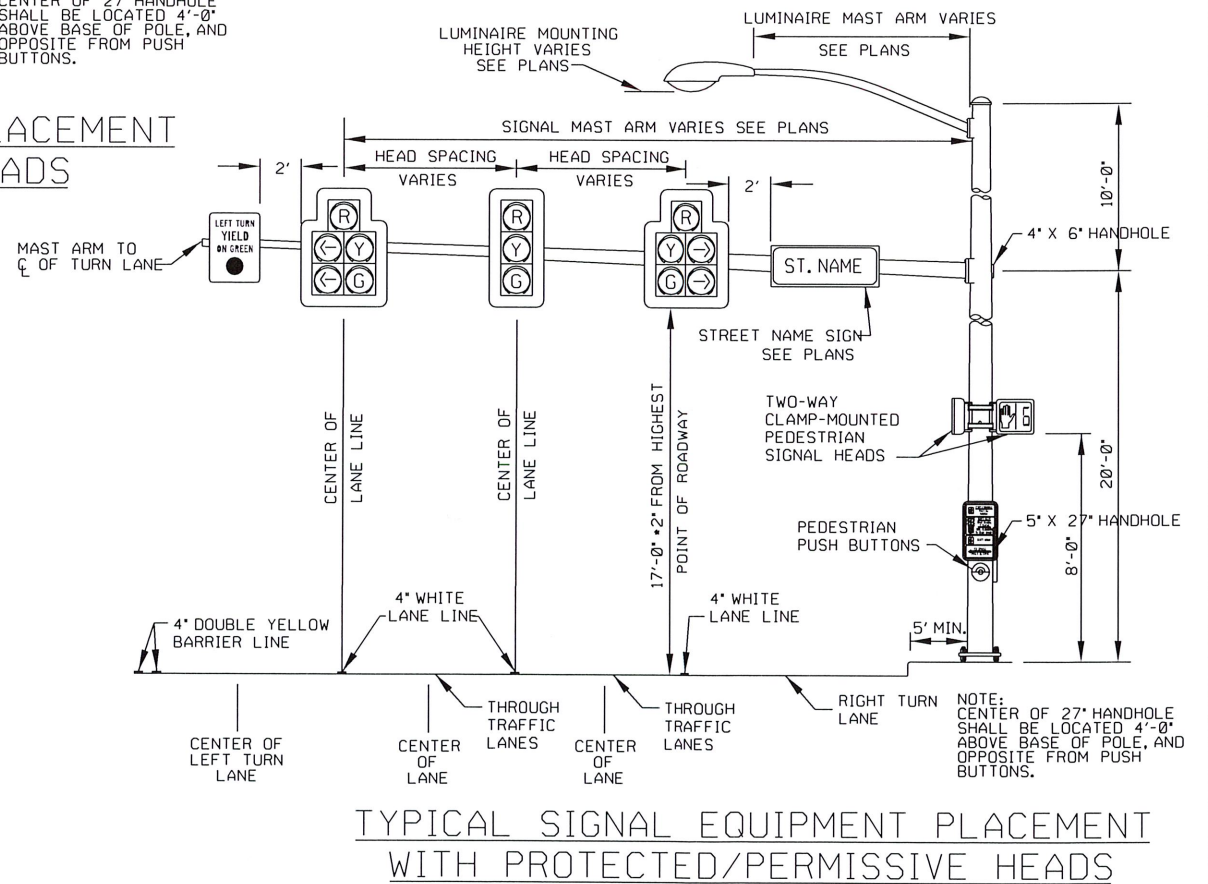
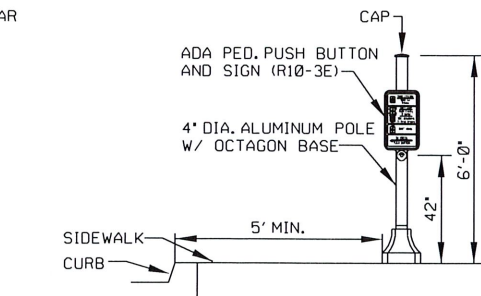


- NOTE:**
- PULL BOX LOCATIONS SHALL BE OUTSIDE OF WHEELCHAIR RAMPS AND WHEEL DRAG PATH.
  - SIGNAL HEAD, PEDESTRIAN HEAD, AND PEDESTRIAN PUSH BUTTON PLACEMENT TO BE APPROVED BY THE TRAFFIC ENGINEER PRIOR TO INSTALLATION.
  - PUSH BUTTONS SHALL MEET MUTCD AND ADA REQUIREMENTS AND SHALL BE LOCATED WITHIN 10 INCHES OF A LEVEL, ALL-WEATHER SURFACE, AND NO CLOSER THAN 30 INCHES NOR MORE THAN 10 FEET FROM THE FACE OF CURB AT RAMP.



PATH NAME: /E1/PARTS/STD/DCN.STDS/613-podst1-mast-arm-pole-det.dgn SBW/RSB 08/06/2021

*[Signature]*  
CITY ENGINEER  
CITY OF TULSA, OKLAHOMA  
ENGINEERING SERVICES DEPARTMENT

*[Signature]*  
CITY TRAFFIC ENGINEER  
DATE: MARCH 2022

PEDESTAL AND MAST ARM POLE DETAILS

REVISION	BY	DATE