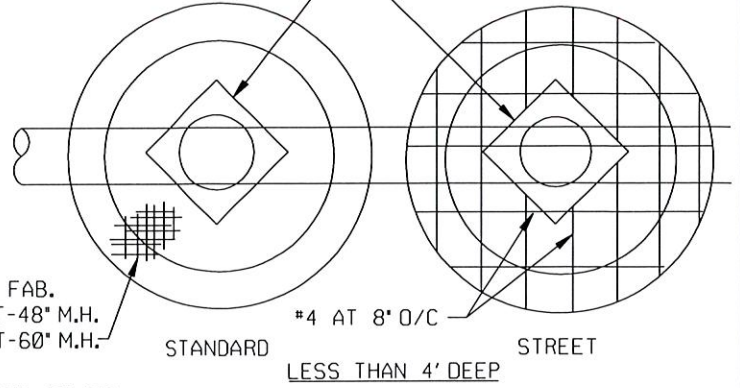
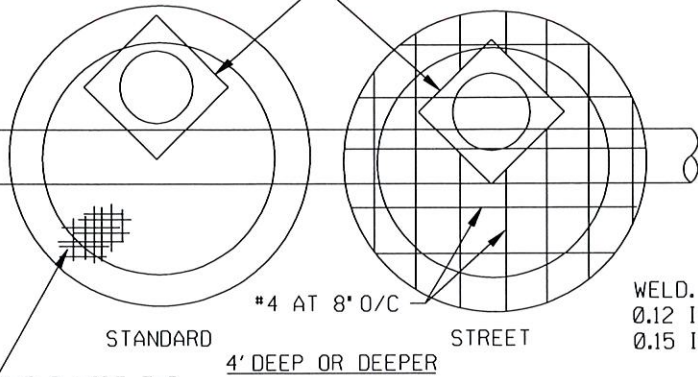


#4 BAR 30" LENGTH, 4 EA.
DIAGONAL TO MAIN REINF.

#4 BAR 30" LENGTH, 4 EA.
DIAGONAL TO MAIN REINF.

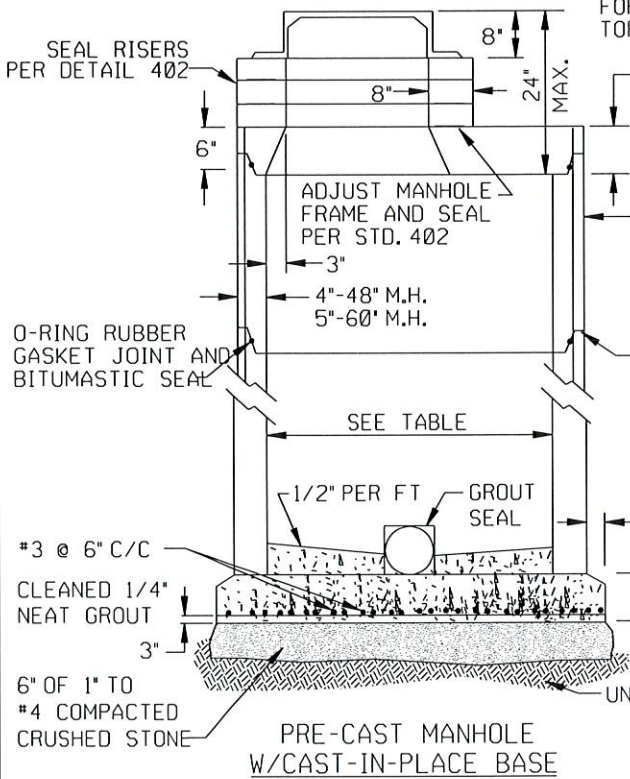


TOP VIEW OF FLAT CONCRETE SLAB

WELD. WIRE FAB.
0.12 IN² / FT-48" M.H.
0.15 IN² / FT-60" M.H.

FINISH GRADE AS DETERMINED BY ENGINEER

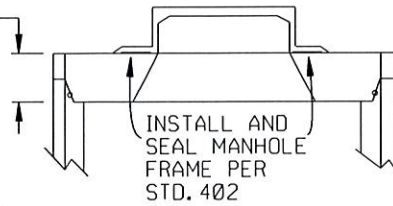
SEE STD. 414
FOR MANHOLE
TOP ADJ.



6"-48" M.H.
8"-60" M.H.

RISER PIPE
WELD. WIRE FAB.
0.12 IN² / FT- 48" M.H.
0.15 IN² / FT- 60" M.H.

WALL JOINTS WRAPPED
WITH 9" JOINT WRAP
SHALL BE INFISHIELD GATOR
WRAP MANUFACTURED BY
SEALING SYSTEMS INC. OR
APPROVED EQUAL

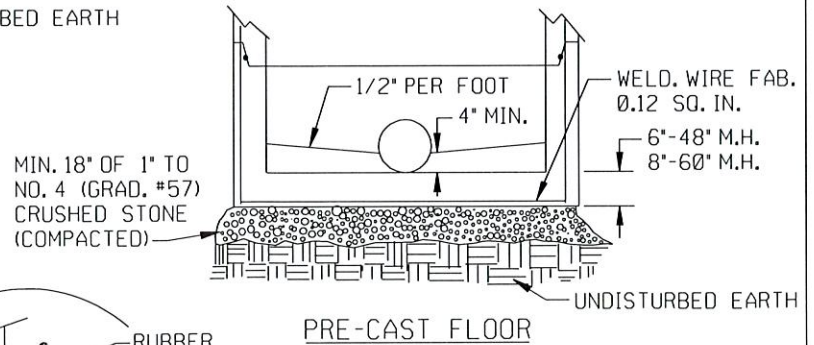


INSTALL AND SEAL MANHOLE FRAME PER STD. 402
LESS THAN 4' DEEP FROM INVERT TO FINISH GRADE

NOTES

1. INVERT TO BE 3/4 X PIPE DIAMETER
2. USE EXTENDED BASE WITH DEPTH OVER 12'

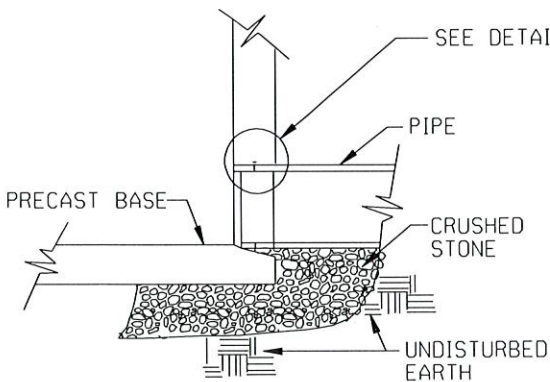
M.H. 4' I.D.	8" TO 12" PIPE
M.H. 5' I.D.	15" TO 21" PIPE
M.H. 6' I.D.	24" TO 36" PIPE
SPECIAL M.H.	LARGER THAN 36"



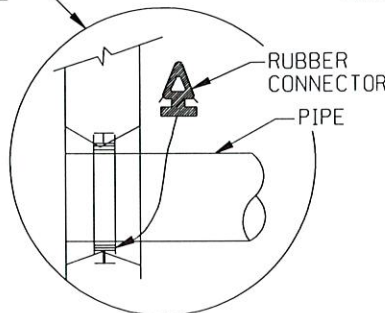
MIN. 18" OF 1" TO NO. 4 (GRAD. #57) CRUSHED STONE (COMPACTED)

PRE-CAST FLOOR

NOTE: DROP INLETS TO BE STANDARD WITH TOP PIPE HAVING SHAPED INLET



PRE-CAST BASE JOINT



RUBBER MANHOLE PIPE CONNECTOR

AS SHOWN OR EQUAL

STANDARD DETAIL PRE-CAST SANITARY SEWER MANHOLES	
CITY OF TULSA, OKLAHOMA ENGINEERING SERVICES DEPARTMENT	
DRAWN BY: D.J.N. CHECKED BY: <i>HAS</i> DATE: MARCH 2023	APPROVED <i>[Signature]</i>
NOT TO SCALE	STANDARD NO. 358