



---

# Fall Programs

## September - November 2023

---



---

**John P. Lasater IV Three-Day Workshop**  
**September 28, 29, & 30**  
*Sponsored by the WaterWorks Advisory Council*

---

Contact Info .....	pg. 2	Private Groups .....	pg. 6	Drawing, Painting & Printmaking .....	pg. 12
Policies .....	pg. 3	Our Instructors .....	pg. 7	Fiber Arts & Textiles .....	pg. 15
John P Lasater IV.....	pg. 4	Clay .....	pg. 9	Course Calendar .....	pg. 18
Facility Rental .....	pg. 5	Jewelry, Metals & Glass .....	pg. 10	About Us .....	pg. 20





### **Hours of Operation\***

Monday | 8:30 a.m. - 8:30 p.m.  
Tuesday | 8:30 a.m. - 8:30 p.m.  
Wednesday | 8:30 a.m. - 8:30 p.m.  
Thursday | 8:30 a.m. - 8:30 p.m.  
Friday | 8:30 a.m. - 4:30 p.m.  
Saturday | 10:30 a.m. - 4:30 p.m.  
Sunday | Closed

### **Building Closures**

September 2- 4 | Labor Day Weekend  
November 10 | Veterans' Day  
November 23-25 | Thanksgiving Holiday

*\*Building will close after the last scheduled activity.*

### **Contact Us At:**

WaterWorks Art Center  
1710 Charles Page Blvd.  
Tulsa, OK 74127

Phone: (918) 596-2440  
Fax: (918) 596-2442

[www.cityoftulsa.org/waterworks](http://www.cityoftulsa.org/waterworks)  
[www.waterworksartcenter.com](http://www.waterworksartcenter.com)

### **Staff**

Anna America | Director  
[annaamerica@cityoftulsa.org](mailto:annaamerica@cityoftulsa.org)

Stacie Martin | Deputy Director  
[smartin@cityoftulsa.org](mailto:smartin@cityoftulsa.org)

Dustin Jagers | Park/Recreation Programs  
Manager [djagers@cityoftulsa.org](mailto:djagers@cityoftulsa.org)

Hans Fichtenberg | Recreation Coordinator  
[hfichtenberg@cityoftulsa.org](mailto:hfichtenberg@cityoftulsa.org)

Ingrid Hamel | Recreation Coordinator  
[ihamel@cityoftulsa.org](mailto:ihamel@cityoftulsa.org)

Trudy Dunn | Custodian  
[tdunn@cityoftulsa.org](mailto:tdunn@cityoftulsa.org)

### **Find, Follow & Share:**

@WaterWorksArtCenter  
@TulsaParks

Visit [www.tulsaparks.org](http://www.tulsaparks.org) for classes and programs offered at all of our parks and community centers!

---

# Policies

---

## **Enrollment:**

Enroll online for any course at [guide.tulsaparks.org](http://guide.tulsaparks.org) or in person at WaterWorks Art Center. We encourage you to enroll in courses early, as they have limited spaces. If a course is full, we can place those still interested on a waitlist. Courses are available to persons 16 years of age or older unless otherwise noted. Programs not meeting minimum enrollment before their start date will be canceled, and some programs may have an enrollment deadline that can result in late enrollment fees.

## **Cost and Payment:**

Advanced registration for classes is required. Payments can be made online or in person, and we accept Visa/Mastercard credit cards, check, or cash. If paying in cash, an exact change is required. Make all checks payable to the City of Tulsa. Materials or kit fees are paid to instructors on the first day of class. Tuition covers all necessary tools and supplies unless otherwise noted. A supply list will be provided to students when needed.

A 25% fee will be added to all rental and programming prices for residents living outside the City of Tulsa limits, but senior citizen discounts, scholarships, and non-profit rates are available for some programs and services. Speak with a park staff member for more details.

## **ID Cards:**

All patrons age 10 and older must obtain a free Tulsa Parks ID card to participate in activities. Membership cards will be issued upon enrollment if registering in person. If enrolling online, membership cards can be picked up at the front desk on your first day of class. Check in using your membership card with each visit.

## **Attendance:**

Tuition and fees are for the entire course, regardless of attendance. Students must attend the first day of class or contact us before the class meeting. Otherwise, they will be unenrolled with no refund or credit issued.

## **Program Change:**

Changes to programs are made based on current enrollment numbers, health and safety concerns, or when needed by the instructor. This can result in a change of day or time of the program, as well as location, class size, changes or restrictions in program content, or even cancellation of the program. When a change to a class is made, we will contact all enrolled participants with information about the change as soon as possible. A refund or in-house credit is available if a participant no longer wants to attend the changed class.

## **Credits & Refunds:**

A credit or refund will be issued if a student withdraws before the class date. Credits are useable at any Tulsa Parks location. Refunds are issued via check and will be mailed to the recipient.

## **Health & Safety:**

The City of Tulsa's Parks, Culture & Recreation Department remains committed to ensuring the health and safety of our staff and residents.

- Online registration is available at [guide.tulsaparks.org](http://guide.tulsaparks.org) and is the preferred method of enrollment and payment for all programs and events to reduce your wait time and increase safety.
- Each program will have unique health and safety guidelines for the activity/event.
- Additional updates and policies will be communicated by center staff as well as posted online on our website and social media accounts.

## **Bullying and Discrimination:**

Bullying and discrimination are real and taken seriously by Tulsa Parks and the City of Tulsa. Bullying or discriminatory behavior by any patron will not be tolerated within our facility or park grounds.

## **Tulsa Parks Policies & Local Ordinances:**

Visit [www.cityoftulsa.org/park-rules](http://www.cityoftulsa.org/park-rules) for a full list of department policies and local ordinances about Tulsa Parks, programs, and facilities.



# John P. Lasater IV



*Original Paintings by John P. Lasater IV*

Join us September 28-30 for our three-day workshop on developing a large landscape painting. This workshop addresses artists' everyday struggles in maintaining a sustained effort and the importance of taking breaks during the painting process. Led by John P. Lasater IV, an acclaimed artist known for his numerous awards in national competitions and his expertise in landscape subjects, participants will learn techniques to infuse vitality into their studio landscape paintings. John's mastery of pictorial concepts, open-form painting, naturalism, sophisticated color mixing, and design principles will be shared through insightful lectures, daily demonstrations on a large painting of his own, and hands-on guidance as students develop a large landscape over three days. Prepare to be enlightened and challenged by his wealth of experience in painting and teaching.

**Cost: \$250**

**Deadline for enrollment : September 7**

*Sponsored by the WaterWorks Advisory Council*

Supply list will be distributed by John P. Lasater IV two weeks prior to the workshop

Additional information and to register online: [waterworksartcenter.com](http://waterworksartcenter.com)

**WaterWorks Art Center | 1710 Charles Page Blvd. | (918) 596-2440**



---

# Birthday Art Parties

---

Celebrate birthdays with us! Art-themed parties are available for kids ages six and up. Each birthday party lasts approximately 1.5 hours (45 minutes for the art project and the remaining 45 minutes for guests to enjoy refreshments from the host family). Typical art projects include acrylic painting on canvas; watercolor painting on paper; cards with ink stamping; and mixed media collages.

## WaterWorks Birthday Parties include:

- Use of the large studio space with tables and chairs
- Use of art supplies necessary to complete your take-home project
- An art instructor who guides guests through the art project designed for children ages 7 - 12

Parties of up to 10 children: \$100 (minimum)

Parties with 11 or more children: \$10 per child, with a maximum attendee count of 20 children



---

# Facility Rental

---



Are you planning a reception, small corporate function, or party? WaterWorks Art Center is the perfect venue for your event! Up to 150 guests can enjoy our beautiful large studio space with picturesque windows, stage, adjoining outdoor patio, and views of historic Newblock Park and the downtown Tulsa skyline. On-site parking and a kitchenette are available for your event at no extra cost.

Contact [ihamel@cityoftulsa.org](mailto:ihamel@cityoftulsa.org) for rates, policies, and availability.

---

# Special Events

---



## "Drawing on Memories"

First Wednesdays 1:30 - 2:30 p.m.

September 6 • October 4 • November 1

This program is free and specifically crafted for individuals with Early Stage Alzheimer's or related dementia, as well as their caregivers. Its main goal is to provide an opportunity for people with the disease to use their remaining motor skills and non-linear communication to create a work of art in a supportive environment. Each session is composed of a hands-on, interactive activity that is facilitated, along with the chance to meet others who are directly affected by an early-stage diagnosis.

Go to [alz.org/crf](http://alz.org/crf) to reserve a seat



---

# Private Groups

---

Inspire and energize any group or team with our fun and creative visual art activities. We will work with you to create an event that takes a group of six or more out of their ordinary day-to-day routine and into our space for an inspiring, creative art activity—priced per person.



## **Collaborative Painting**

**3 Hours • \$30 per person**

This project requires your group to negotiate colors, shading, and transitioning between images and final details as a team. You'll end up with one large image on canvas that is perfect for use in a meeting room or break area.



## **Clay Creations**

**2 Hours • \$30 per person**

Work with soft clay to hand build a vessel or sculpture from scratch. Participants learn techniques to texture and color their creations as desired. All projects are bisque-fired, glazed, and ready to pick up at WaterWorks two weeks after the event.



## **Metal Stamping**

**3 Hours • \$45 per person**

Design and make personalized jewelry using stamps and charms. Students learn to stamp letters and symbols on sterling silver and brass shapes for a necklace and add beads and charms. Make a personalized bracelet by stamping and forming metal over a mandrel to fit your wrist. Students leave class with both a necklace and a bracelet. All materials are provided.



## **All About Cuffs**

**4 Hours • \$55 per person**

Learn the fundamentals of jewelry making — sawing, filing, annealing, texturing, and polishing — while creating a couple of unique, textured cuffs to take home! Students use copper or Nugold, which is provided.



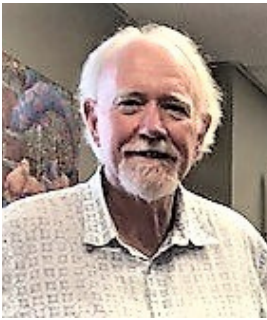
# Our Instructors



**Laura Borders** is a Cherokee artist who has been creating art all her life and weaving for over 25 years. She was taught by Kathy Van Buskirt, a master Cherokee basket weaver whom the Cherokee Nation recognizes as a "National Living Treasure." She continues to share her knowledge and expertise in Cherokee art with children and adults in her community through Artists-In-The-Schools, by The Arts and Humanities Council of Tulsa, Gilcrease Museum, Leadership Oklahoma, and WaterWorks Art Center.



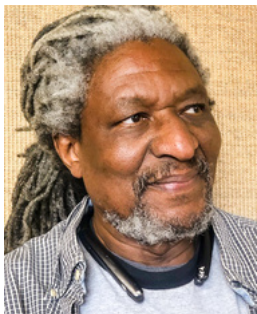
**Hans Fichtenberg** has always been drawn to creative forms of expression. He enjoys all types of visual art, including creating pottery, experimenting with faux finishes, photography, exploring architecture and interior design, and expanding his skills in paper making and various painting styles. Hans served on the WaterWorks Advisory Council for three years before joining the WaterWorks Staff in 2018. "Working in an environment filled with inspired and creative spirits is a privilege and joy."



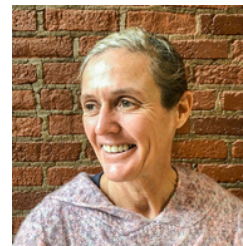
**Tom Conrad** holds a Master of Fine Arts degree from the California College of the Arts and a Bachelor of Art History and Master of Art in Painting from the University of Tulsa. He is an experienced art teacher who taught printmaking, color and design, and even English in Tokyo, Japan. His extensive travel and living experience in other cultures provide a perspective and enthusiasm for many art forms. His paintings are exhibited at Joseph Gierek Fine Art Gallery in Tulsa and Howell Gallery in Oklahoma City.



**DJ Foster** is a Cherokee citizen who grew up in northeastern Oklahoma. She holds a B.S. in Medical and Molecular Biology from Rogers State University in Claremore and a D.D.S. from the University of Missouri in Kansas City. Dr. Foster learned basket weaving while working for the Chippewa tribe. Now, back home in Tulsa, she hopes to instill a love of the art of basket weaving in others and share her experiences and knowledge in this ancient art form.



**Yusuf Etudaiye** is a contemporary African artist born in Nigeria on the west coast of Africa. At 19, he came to the U.S. to study. He received an Associate of Arts degree from Northern Oklahoma College in Tonkawa, Oklahoma, and a Bachelor of Fine Art from Oklahoma State University. Etudaiye later established Etudaiye Pottery Studio in McAlester, Oklahoma, and looks at art "not just as a matter of talent, but rather a process of evolution."



**Ingrid Hamel** studied Fine Arts in her hometown of Montreal, Quebec. After graduation, she headed to Hawai'i, where she spent 20 years. "Those experiences profoundly affected my development and inspiration as an artist – Island life, native and Asian culture, and its vast diversity have been instrumental in refining my artistic expression using graphite and charcoal, printmaking, and weaving. I love being part of the WaterWorks Art Center team. Aloha!"



**Joseph Jenner** is a metalsmith who creates work focusing on processes and traditional techniques. Joseph received a BFA in Metalsmithing and Blacksmithing from Southern Illinois University Carbondale. In 2011, he relocated to Tulsa and spent ten years producing ornamental metalwork for Wiemann Metalcraft, and he currently works as a bench jeweler. He sells his work as Wander Rust and frequently exhibits it at local and regional craft fairs.



# Our Instructors



**Gina Crowder Levesque** works with natural dyestuffs, weaving, hooking, spinning, and traditional penny rug construction. She has been dyeing with raw materials and researching their history for over 20 years. Gina has also taken and taught many natural dye workshops throughout the country.



**Greg Stone** explores the interplay of light and shadow in his landscape paintings. He's won top awards in regional/national exhibitions and *plein-air* painting competitions. His work was included in the prestigious annual *Enduring Brilliance!* Exhibition of the Pastel Society of America (PSA) and the International Association of Pastel Societies (APS) annual juried exhibition, among others. Greg is a Signature Member of the PSA and a member of the Oklahoma Pastel Society, Alpha Rho Tau of Tulsa, and the American Impressionist Society. See more of his work on his website, [www.gregstonefineart.com](http://www.gregstonefineart.com), Facebook, and Instagram.



**Lori Roll** learned about art, color, and composition by observing nature as a photography student at the University of Tulsa. She has worked with jewelry, collage, small environments, acrylic, and oil painting and has shown her work at Arizona, Maine, and Oklahoma galleries. She became interested in the encaustic art form and cold wax medium due to their rich histories, fluidity, and textural possibilities and considers herself a perennial student of these mediums.



**Cindy Swanson** began her journey with a class at WaterWorks Art Center in 2000. More art classes followed in Ravenna, Venice, and Pennsylvania. She continued to gain knowledge and inspiration from well-known mosaic artists. She is an Oklahoma Visual Artist Coalition (OVAC) member and participates in local shows.



**Emily Simonds** is a mixed-media installation artist, sculptor, and writer who loves to take art to the next level through engineering, sustainability, and interactivity. Every piece she creates utilizes at least 50% recycled materials; most are made from more than 80%. Sourcing her items and raw materials primarily from junkyards, she uses everything from billboards to buses. She strives to blend elegant engineering solutions seamlessly into interactive art installations and sculptures, challenging her audience to think more profoundly about the world around them and embrace their imagination. Since 2009, she has worked with various techniques ranging from airbrush and thermoplastic heat-forming to welding and 3D printing. Specializing in using unconventional materials, Emily is inspired by the problems people face in everyday life and endeavors to bring elements of fantasy and wonder to the solutions.



**E. Dee Tabor** has over 20 years of experience as a Chickasaw artist, primarily in contemporary jewelry. Most of her coursework has been technique-driven, seeking out workshops with jewelry artists who have become acknowledged experts in many forms. Retired after more than 30 years of teaching, E. Dee now devotes her full attention to making art and further exploring the designs collected in her journals.



**Lynn Tedder** holds a Bachelor of Fine Arts from the University of Texas at Austin. She has been weaving for over 40 years and studying, teaching, and writing about weaving for over 20. She has had articles and projects published in *Weaver's* and *Handwoven* magazines. From 2000 until 2015, she served as a technical editor for *Handwoven* magazine. She particularly enjoys figuring out what the threads in a weave structure are doing and then explaining her discoveries to anyone who stands or sits still long enough to listen.

---

# Clay Classes

---

**+** All Clay Students must wear closed-heel and closed-toed shoes.



## ***Beginning Pottery Wheel***

Instructor: Yusuf Etudaiye

---

**Cost: \$145 Two Classes Available:**

**WW26501.2 | Mondays, September 11- October 30 | 6 – 8:30 p.m.**

**(no class on Monday, September 4)**

**WW26502.2 | Tuesday, September 12 - October 31 | 1 – 3:30 p.m.**

This eight-session class is designed for anyone interested in learning how to throw on the pottery wheel. After a comprehensive policies and procedures lecture, students learn clay-forming techniques and develop an understanding and appreciation for the studio process and hand-craftsmanship, including how to center clay on the wheel, make cylinders, and pull coffee mugs and bowls. Step-by-step instruction provides the basic how-to information needed to complete one or more glazed projects. Each student must purchase 25 lbs. of clay (\$20); an optional basic clay toolset is available for \$10.



## ***Handbuilding Techniques in Clay***

Instructor: Yusuf Etudaiye

---

**Cost: \$145 | Wednesdays, September 13 - November 1 | 1 – 3:30 p.m.**

Resident Teaching Artist Yusuf Etudaiye introduces students to hand-building clay practices and equipment in our Clay Studio, including the slab roller and extruders. Students learn basic hand-building glazing techniques, create objects such as jewelry boxes, and soap dispensers, and experiment with free-form sculpting. This is the perfect way to "get to know clay," all are welcome in this eight-session class. Glazes and firings are included in the tuition. Clay toolsets (\$10), brown clay (\$20), and off-white clay (\$25) are available for purchase at WaterWorks Art Center and are not included in the tuition fee for the class. This class is limited to eight (8) participants. No experience is necessary - all skill levels are welcome.

**Class Code: WW26503.2**



## ***Intermediate Pottery Wheel***

Instructor: Yusuf Etudaiye

---

**Cost: \$115 | Thursdays, September 21 - October 26 | 1 – 3:30 p.m.**

This six-session class provides students who are already familiar with the safety policies and procedures of the studio and who have taken Beginning Pottery Wheel at WaterWorks and wish to expand their skills. Students continue their explorations of throwing clay on the wheel and exploring various forms. Brown clay(\$20) and off-white clay (\$25) are available for purchase at WaterWorks Art Center and are not included in the tuition fee for the class. Clay tool sets (optional) are available for \$10—pre-requisite: Pottery Wheel 101 or Beginning Pottery Wheel.

**Class Code: WW26504.2**



---

# Clay Classes

---

**+** All Clay Students must wear closed-heel and closed-toe shoes.



## ***The Art of Raku***

Instructor: Yusuf Etudaiye

---

**Cost: \$130 | Wednesdays, October 11 - November 15 | 6 - 8:30 p.m.**

In this six-session class series, students learn about the history of this ancient art form and explore the many forms and glazes associated with Raku. Resident Teaching Artist Yusuf Etudaiye provides step-by-step demonstrations of building forms and discusses various methods for glazing and firing Raku pieces. Due to the size of the kiln, students are limited to creating a total of three (3) medium-sized pieces during this class. WaterWorks stocks Brown clay (\$20) and off-white (\$25) which are available for purchase but are not included in the tuition fee for the class. Clay tool sets (optional) are available for \$10. Pre-requisite: Beginning Pottery Wheel, Small sculpture, or Hand-building in Clay. Students must be able to create either hand-built or wheel-thrown pottery pieces without instruction to participate in this class limited to seven (7) students.

**Class Code: WW26505.2**

## ***Clay Date for Kids: Build a Giant Mug!***

Instructor: Hans Fichtenberg

---

**Cost: \$45 | Saturday, November 4 | Noon - 4 p.m.**

Kids age seven and up with an attending adult can build a giant mug in this fun, hands-on clay workshop! Participants use slab-rolled clay and a cardboard cylinder form to construct the body of the mug and attach a handle. Then, using stencils, rubber stamps, and other tools, personalized designs are added for a one-of-a-kind glaze-fired mug ready for pickup one week later at WaterWorks. The workshop fee is based on the number of mugs created so simply sign up under one name if an adult assists one child; if the adult also wants to make a mug as well as assist the child, sign up under two names. All materials are provided. All skill levels are welcome.

**Class Code: WW26506.2**



---

# Jewelry, Metals & Glass Classes

---



## **Mosaics- Italian Style**

Instructor: Cindy Swanson

---

**Cost: \$100 | Tuesdays, September 12 - October 24 | 6-8 p.m.  
(no class September 19)**

Italian smalti, a glass paste, was used to create the byzantine mosaics. In this class, you will learn to cut smalti using wheeled glass nippers and how to mix the adhesive to create a five-inch square piece. Simple patterns are provided; the skipped class on September 19 allows time for students-ordered glass to arrive. A kit fee of \$7 payable to the instructor provides all materials other than the smalti ordered by each student individually. All skill levels are welcome.

**Class Code: WW26507.2**



# Jewelry, Metals & Glass Classes



## Make a Copper Belt Buckle

Instructor: Joseph Jenner

---

**Cost: \$70 | Saturday, October 7 & 14 | 11 a.m. - 4 p.m.**

Learn how to create your copper belt buckle in two afternoons! Techniques demonstrated and taught include texturing, stamping and forming heavy gauge copper, and making your fittings for the buckle. A kit fee of \$15 provides the necessary materials for one belt buckle. Some metalsmithing experience or completion of Jewelry Basics is helpful but optional in this exciting two-session class, which is limited to six (6) students.

**Class Code: WW26508.2**



## Jewelry 101

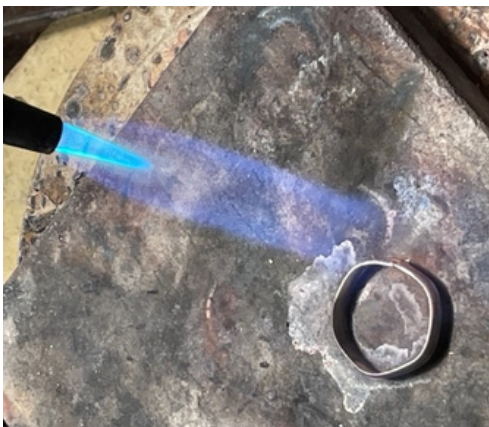
Instructor: E.Deer Tabor

---

**Cost: \$150 |  
Wednesday, Thursday & Fridays, October 11-20 | 1 - 4 p.m.**

Create a foundation of jewelry and metalsmithing skills in this six-lesson program. Learn the fundamental techniques of jewelry making including sawing, annealing, texturing, soldering, polishing, and more. Students learn to journal and will work on samples and finish two to three pieces, (i.e., pendant, earrings, and/or ring) by the end of the class. This is a great way to explore the many techniques and skills needed to begin making jewelry. A kit fee of \$40 (payable to the instructor) covers all materials. Tools are provided and shared and no prior jewelry experience necessary. This six-session class is limited to six (6) students.

**Class Code: WW26509.2**



## Soldering Crash Course

Instructor: E.Deer Tabor

---

**Cost: \$55 | Thursday-Saturday, November 2- 4 | Noon - 4 p.m.**

This is an excellent class for beginners and experienced jewelry makers alike! Students learn different soldering techniques, including pallion, pick, sweat, and wire soldering. Then, students learn which solder(s) to use for projects. Demonstrations by the instructor and discussions of different types of torches and gasses aid in understanding this fundamental techniques class. Tools are provided and shared. A kit fee of \$30 (payable to the instructor) provides the necessary materials.

**Class Code: WW26510.2**

# Jewelry, Metals & Glass Classes



## **Cold Connections! Joining Metals Without Solder**

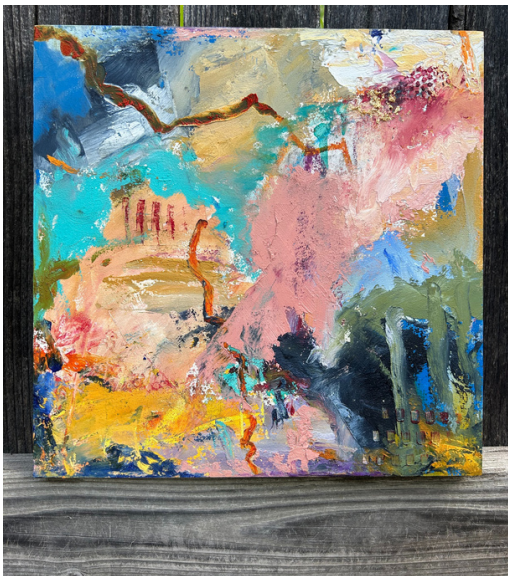
Instructor: E.Deer Tabor

**Cost: \$55 | Thursday - Saturday, November 16-18 | Noon - 4 p.m.**

When working with ferrous vs non-ferrous metals or combining glass and plastics with metals for jewelry it's handy to know how to join components without using a torch to solder. Explore techniques using wire, tubing, prongs, screws, tabs etc. to connect multiple layers together and for decorative embellishments. Tools are provided and shared. A kit fee of \$30 (payable to the instructor) provides the necessary materials.

**Class Code: WW26511.2**

# Drawing, Painting & Printmaking



## **Waxing Poetic: Intermediate Cold Wax & Oils Painting**

Instructor: Lori Roll

**Cost: \$60 | Saturday, September 9 | 11 a.m. - 4 p.m.**

If you have already taken a cold wax and oil painting workshop, this workshop is for you! You've already got the basics and a general understanding of the endless possibilities of this malleable medium, and you're ready to explore and expand your repertoire. We refresh ourselves with the basics, gather inspiration from various sources, and then paint! Students explore techniques beyond the basics, including using pigment sticks, collage, and mixed media. The instructor demonstrates color mixing, applications, and technique. Students bring a roll of 1" painter's tape and a pad of Arches ( or another brand) 12" x 16" oil paper. Wear old clothes or an apron. This dynamic offering is limited to ten (10) participants to allow for maximum individual attention and painting time.

**Class Code: WW26512.2**



## **Concertina Sketchbooks Workshop**

Instructor: Lori Roll

**Cost: \$60 | Friday-Saturday, September 22 & 23 | 11 a.m. - 4 p.m.**

Many artists employ sketchbooks to capture daily exercises and inspire finished pieces. This expressive class will utilize collages to create uniquely expressive sketchbooks. Concertina sketchbooks fold out like an accordion, creating one long piece of work. We will add acrylic paint, glue, ink, paper pieces, cloth scraps, and other materials to create colorful sketchbooks. All materials are provided, but artists are encouraged to add any additional unique papers, found objects, and odd pieces to their work if desired. All skill levels are welcome. Please wear old clothes or a protective apron and bring your lunch or a snack, if you'd like to.

**Class Code: WW26513.2**



# Drawing, Painting & Printmaking



## ***Introduction to Drawing I***

Instructor: Ingrid Hamel

---

**Cost: \$65 | Thursdays, October 5-26 | 6-8:30 p.m.**

Drawing is a fundamental part of any artistic process allowing the artist to translate three-dimensional forms onto a two-dimensional surface. In this four-week class, students learn how to draw objects from life, such as still life, interior space, exterior landscape, and even human forms. A supply list is provided for each enrolled student. Easels and drawing boards are provided for use during class. All skill levels are welcome. Class size is limited to eight (8) students.

**Class Code: WW26514.2**



## ***Painting Fall Colors in Pastel***

Instructor: Greg Stone, PSA

---

**Cost: \$95 | Wednesdays, October 11- November 8 | 6- 8:30 p.m.  
(no class on October 25)**

Students will learn to create beautiful autumn landscape paintings without being too garish with their color choices. We'll explore some underpainting techniques and review important lessons about composition and design. Reference photos will be provided, or students can bring their own. Students should bring a selection of soft pastels (not oil pastels) and sanded pastel paper. A suggested supply list will be provided before the start of the class.

**Class Code: WW26515.2**



## ***Hot Wax: An Intro to Encaustic Painting Workshop***

Instructor: Tom Conrad

---

**Cost: \$65 | Friday, October 13 | 10 a.m.- 4 p.m.**

Join us in an exploration into the bold world of hot wax painting! Using hot pigmented wax is versatile - you can build opaque or translucent wax layers, then scrape, texture, and polish to achieve various stunning visual effects. It's also possible to incorporate collage materials to add an extra dimension to the wax imagery, so bring any additional materials ( photos, fabric, specialized papers) you desire and let your imagination run wild! Each student leaves with a 9" x 12" painted encaustic board. Students are encouraged to wear aprons or old clothes. All materials are included in this one-day introductory workshop limited to six (6) participants. All skill levels are welcome. Please bring a sack lunch and beverage to enjoy during a short lunch break.

**Class Code: WW26516.2**



# Drawing, Painting & Printmaking



## **Introduction to Pastel Workshop**

Instructor: Greg Stone, PSA

---

**Cost: \$45 | Saturday, October 21 | Noon - 4 p.m.**

Pastel is an incredibly versatile and expressive medium. Instead of using brushes to apply the pigment, pastel marks are applied by hand to bring a landscape, still life, portrait, or abstract painting to life. This workshop introduces students to the medium of pastels and offers hands-on practice with many mark-making techniques. The session begins with a landscape painting demonstration by Greg Stone, a Pastel Society of America Signature Member. All skill levels are welcome. The instructor will provide a variety of soft pastels and painting surfaces for a kit fee of \$30 (payable to the instructor on the day of the workshop). No additional supplies are required.

**Class Code: WW26517.2**



## **Introduction to Drawing II**

Instructor: Ingrid Hamel

---

**Cost: \$65 | Tuesdays, November 7-28 | 6-8:30 p.m.**

This class series guides students who wish to apply previously-learned drawing skills, continued focus on observational drawing development, and explore the relationship between positive form and negative space. This four-session class demonstrates and discusses shading, smooth transition of value gradation, measuring for proportion, and creating the illusion of depth and volume. A supply list is provided for each enrolled student. Easels and drawing boards are provided for use during the class. Class size is limited to eight (8) students. Pre-requisite: Introduction to Drawing I or previous drawing experience.

**Class Code: WW26518.2**



## **Linoleum Block Print Holiday Notecards Workshop**

Instructor: Tom Conrad

---

**Cost: \$45 | Saturday, November 18 | 11 a.m. - 4 p.m.**

Students are introduced to printmaking using carved linoleum blocks to create original prints. Bring a sample of a favorite pattern or design to incorporate, or the instructor will provide some images for inspiration. Step-by-step demonstrations of image transfer, carving techniques, and possibilities for hand-coloring your custom print are covered. Notecards featuring various holiday motifs and themes are just a few examples of previous designs. All materials are included to carve one 4" x 6" linoleum block and specialized art papers and note cards with envelopes to make several projects. No previous experience necessary.

**Class Code: WW26519.2**

# Drawing, Painting & Printmaking



## **Still Life with Collage Workshop**

Instructor: Tom Conrad

**Cost: \$50 | Friday, November 3 | 10 a.m. - 4 p.m.**

Students create a still life based on a classic masterpiece or their inspiration using fragmenting, combining, and re-contextualizing to transform objects and images. In this one-day workshop, students watch a detailed demonstration of the collage technique and discover new ways to perceive the world. Follow in the footsteps of Matisse, a great painter, gifted sculptor, and master of collage. All materials are provided in this not-to-be-missed workshop. All skill levels are welcome.

**Class Code: WW26520.2**

# Fiber Arts & Textiles



## **Weaving 201: Warping and Weaving Twill**

Instructor: Lynn Tedder

**Cost: \$140 | Mondays, September 11 - October 30 | 6 - 8:30 p.m.**

In this comprehensive eight-session class, participants will wind a warp, thread, and dress a four-shaft floor loom with a striped cotton warp and six different twill threadings. The finished sampler includes 74 different twill patterns as a reference for future weaving projects. All materials for the sampler are included in the cost of the class. Be prepared to understand weaving as you've never understood it before. Students should bring small sharp scissors or snips, a 6-inch sewing ruler, and a 60" tape measure. Note: Students may require additional time outside class to finish the project in the time allotted. The instructor is available by appointment to help as needed. "Weaving 101" or instructor approval is required and is limited to five (5) students. A kit fee of \$20 covers the comprehensive handout.

**Class Code: WW26521.2**



## **Weaving a Personal Project**

Instructor: Lynn Tedder

**Cost: \$140 | Tuesdays, September 12- October 31 | 1 - 3:30 p.m.**

Make your next weaving project uniquely your own by selecting a project from WaterWorks' extensive collection of weaving patterns or using one of your ideas. With instructor assistance, adapt, warp, and then weave the project to suit your vision on one of WaterWorks' looms. This class is limited to eight (8) participants, and instructor approval is required to enroll. Participants must purchase their yarns based on the project they choose.

**Class Code: WW26522.2**



---

# Fiber Arts & Textiles

---



## ***Cherokee Bushel Basket Weaving Two-Day Workshop***

Instructor: DJ Foster

---

**Cost: \$90 | Friday & Saturday, October 6 & 7 | 11 a.m. - 4 p.m.**

The practical need and additional decorative aspect of the basket resulted in the creation of the bushel basket. Students in this class will learn about and create a Cherokee bushel basket with instruction from DJ Foster, a Cherokee citizen who grew up in northeastern Oklahoma and who discovered the technique at a two-day workshop while working for the Chippewa tribe in Lac du Flambeau, WI. Her love of this basket and its history inspired her to share it with others. She will demonstrate the weaving technique and help each student design and create a basket of their own using reed in various sizes and a wooden base. A kit fee of \$40 (payable to the instructor) provides everything you need to create a one-cubic-foot bushel basket. No previous experience is necessary - all skill levels are welcome in this introductory workshop, which is limited to six (6) students.

**Class Code: WW26523.2**

## ***Beginning Cherokee Double-Wall Weaving Workshop***

Instructor: Laura Borders

---

**Cost: \$40 | Saturday, October 14 | 11 a.m. - 4 p.m.**

Students create a Cherokee double-wall basket from natural reed with instruction from Cherokee citizen and artist Laura Borders. She will demonstrate the mechanics of weaving a Cherokee basket. Then, each student creates their unique basket with the option of using hand-dyed reeds to incorporate color and design into their basket. Experience is optional in this introductory workshop. A kit fee of \$30 (payable to the instructor in cash at the beginning of the seminar) provides everything you need to create a small basket. All skill levels are welcome. Note: This is a wet process; students should bring a towel from home and perhaps an apron.

**Class Code: WW26524.2**



## ***Introduction to Natural Dyes: Native and Historic***

Instructor: Gina Crowder Levesque

---

**Cost: \$40 | Saturday, October 28 | 11 a.m. - 4 p.m.**

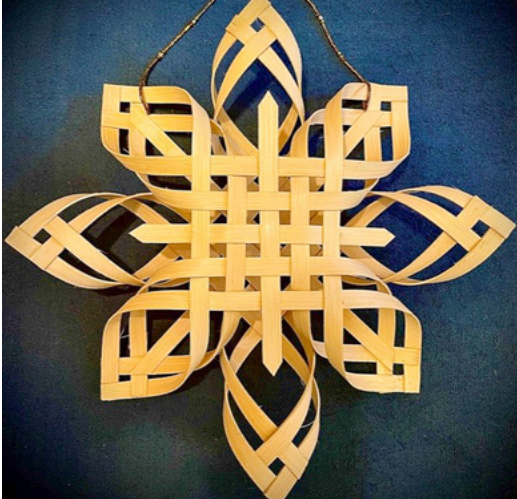
Learn the art and history of fabric dyeing using lightfast and colorfast natural dyes. Over 20 historic and native dyes are utilized in this workshop, including indigo, cochineal, and Osage orange. Students take home a notebook of recipes and yarn samples and are encouraged to bring small pieces to drop into the dye pot. Wear old clothes or a dye apron in this workshop, limited to twelve (12) students. A kit fee of \$15 (payable to the instructor) covers all workshop materials. All skill levels are welcome.

**Class Code: WW26525.2**





# Fiber Arts & Textiles



## **Traditional Woven Star Workshop**

Instructor: Laura Borders

**Cost: \$45 | Saturday, November 4 | 11 a.m. - 4 p.m.**

Woven from natural reed, students create a traditional 14" three-dimensional star, which may be hung using ribbon, twine, or beads, placed on a table, or mounted to a wall. The instructor, Laura Borders, a Cherokee citizen, and artist, guides students through the construction process. No experience is necessary for this introductory workshop. A kit fee of \$25 (payable to the instructor in cash at the beginning of the class) provides everything you need to create a traditional woven star. Students may bring a sack lunch or snack and a beverage to enjoy during the break. No experience is necessary - all skill levels are welcome in this fun holiday season workshop.

**Class Code: WW26526.2**

## Open Studio Policies



### **Jewelry/Metals Open Studio is Back!**

WaterWorks Art Center offers Open Studio sessions for students who have finished Jewelry 101. These sessions are intended for completing jewelry projects from classes offered at WaterWorks, rather than starting new ones or requiring extra guidance. Open Studio provides extra supervised time outside of class to finish workshop or class-based jewelry projects. Students who are interested must contact the WaterWorks office to be added to the Jewelry/Metals list.

**Open Studio Fall Schedule**  
**Friday, September 1, 1-4 p.m.**

All Open Studio patrons must adhere to facility Policies and Procedures and previously-signed Jewelry/Metals Waiver. **To reserve your Open Studio bench, call (918) 596-2440.**

Our facilities are available for use beyond our workshops and classes. If you need more time to finish class projects or dive deeper into the material, Open Studio time is perfect for building a stronger art practice and nurturing our artist community. You will have supervision and access to our equipment for a daily Open Studio fee, allowing you to access most workspaces for up to four hours and to use tools and equipment.

To ensure the safe use of materials and equipment, students must have completed a course (excluding one-day workshops) in the medium studio area. Clay and metals/jewelry students and attendees of specialty workshops and/or special events deemed necessary must sign Release and Waiver forms as well as Policy & Procedures documents. Each studio has its own schedule and policies, and for more information, please call or visit our website at [WaterWorksArtCenter.com/open-studios](http://WaterWorksArtCenter.com/open-studios).

### **Open Studio Fees**

Daily Drop-in	\$10
6-visit Pass	\$45
10-visit Pass	\$75

To ensure equipment availability, Open Studios are currently available **by appointment only**. To reserve your work time, call (918) 596-2440.

# Recreation Program Participant Evaluation



*Tulsa Parks values its participants' input on how to serve better and meet the needs of our residents and community. Our recreational staff wants to ensure you have a positive experience with our programs! Help us better plan and improve future programs and services by taking a few moments to complete this survey.*



**CALENDAR COLORS:**

**CERAMICS**

**FIBER/TEXTILES**

**DRAWING/PAINTING/PRINTMAKING**

**METALS/JEWELRY**

SEPTEMBER						
SUNDAY	MONDAY	TUESDAY	WEDNESDAY	THURSDAY	FRIDAY	SATURDAY
					<b>1</b> 1-4 p.m. Open Studio Jewelry	<b>2</b> <b>CLOSED</b>
<b>3</b>	<b>4</b> <b>CLOSED</b> Labor Day	<b>5</b>	<b>6</b>	<b>7</b>	<b>8</b>	<b>9</b> 11 a.m. - 4 p.m. Waxing Poetic: Intermediate Cold Wax & Oils.
<b>10</b>	<b>11</b> 6-8:30 p.m. Beg. Pottery Wheel 6-8:30 p.m. Weaving 201	<b>12</b> 1-3:30 p.m. Beg. Pottery Wheel 1-3:30 p.m. Personal weaving 6-8 p.m. Mosaic- Italian Style	<b>13</b> 1-3:30 p.m. Handbuilding Clay	<b>14</b>	<b>15</b>	<b>16</b>
<b>17</b>	<b>18</b> 6-8:30 p.m. Beg. Pottery Wheel 6-8:30 p.m. Weaving 201	<b>19</b> 1-3:30 p.m. Beg. Pottery Wheel 1-3:30 p.m. Personal weaving	<b>20</b> 1-3:30 p.m. Handbuilding Clay	<b>21</b> 1-3:30 p.m. Int. Pottery Wheel	<b>22</b> 11 a.m. - 4 p.m. Concertina Sketchbooks	<b>23</b> 11 a.m. - 4 p.m. Concertina Sketchbooks
<b>24</b>	<b>25</b> 6-8:30 p.m. Beg. Pottery Wheel 6-8:30 p.m. Weaving 201	<b>26</b> 1-3:30 p.m. Beg. Pottery Wheel 1-3:30 p.m. Personal weaving 6-8 p.m. Mosaic- Italian Style	<b>27</b> 1-3:30 p.m. Handbuilding Clay	<b>28</b> 1-3:30 p.m. Int. Pottery Wheel 9 a.m. - 4:30 p.m. John P. Lasater IV workshop	<b>29</b> 9 a.m. - 4:30 p.m. John P. Lasater IV workshop	<b>30</b> 9 a.m. - 4:30 p.m. John P. Lasater IV workshop



# OCTOBER

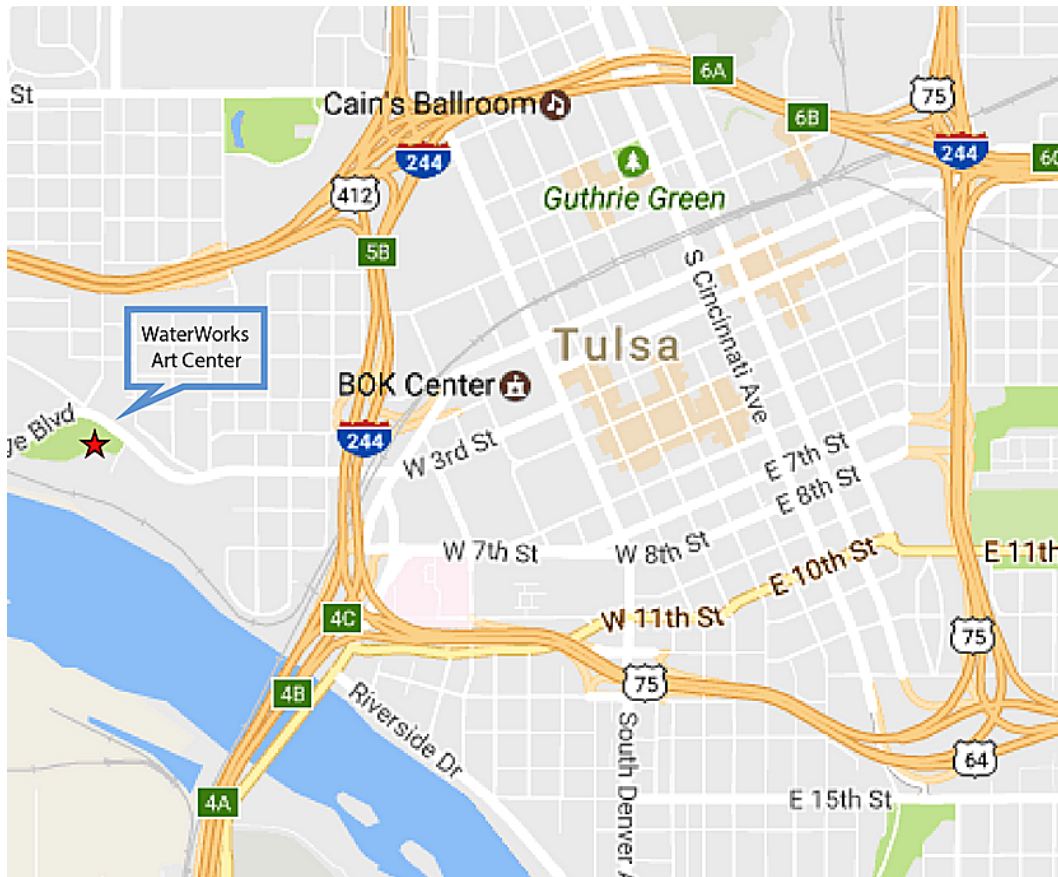
SUNDAY	MONDAY	TUESDAY	WEDNESDAY	THURSDAY	FRIDAY	SATURDAY
<b>1</b>	<b>2</b> 6-8:30 p.m. Beg. Pottery Wheel 6-8:30 p.m. Weaving 201	<b>3</b> 1-3:30 p.m. Beg. Pottery Wheel 1-3:30 p.m. Personal weaving 6-8 p.m. Mosaic- Italian Style	<b>4</b> 1-3:30 p.m. Handbuilding Clay	<b>5</b> 1-3:30 p.m. Int. Pottery Wheel 6-8:30 p.m. Intro to drawing I	<b>6</b> 11 a.m.- 4 p.m. Cherokee Bushel Basket	<b>7</b> 11 a.m.- 4 p.m. Cherokee Bushel Basket 11 a.m. - 4 p.m. Make a Copper Belt Buckle
<b>8</b>	<b>9</b> 6-8:30 p.m. Beg. Pottery Wheel 6-8:30 p.m. Weaving 201	<b>10</b> 1-3:30 p.m. Beg. Pottery Wheel 1-3:30 p.m. Personal weaving 6-8 p.m. Mosaic- Italian Style	<b>11</b> 1-3:30 p.m. Handbuilding Clay 1-4 p.m. Jewelry 101 6-8:30 p.m. Art of Raku 6-8:30 p.m. Painting Fall Colors in Pastels	<b>12</b> 1-3:30 p.m. Int. Pottery Wheel 1-4 p.m. Jewelry 101 6-8:30 p.m. Intro to drawing I	<b>13</b> 10 a.m. - 4 p.m. Hot Wax: an intro to Encaustic Painting 1-4 p.m. Jewelry 101	<b>14</b> 11 a.m.- 4 p.m. Beg. Cherokee Double-Wall Weaving 11 a.m. - 4 p.m. Make a Copper Belt Buckle
<b>15</b>	<b>16</b> 6-8:30 p.m. Beg. Pottery Wheel 6-8:30 p.m. Weaving 201	<b>17</b> 1-3:30 p.m. Beg. Pottery Wheel 1-3:30 p.m. Personal weaving 6-8 p.m. Mosaic- Italian Style	<b>18</b> 1-3:30 p.m. Handbuilding Clay 1-4 p.m. Jewelry 101 6-8:30 p.m. Art of Raku 6-8:30 p.m. Painting Fall Colors in Pastels	<b>19</b> 1-3:30 p.m. Int. Pottery Wheel 1-4 p.m. Jewelry 101 6-8:30 p.m. Intro to drawing I	<b>20</b> 1-4 p.m. Jewelry 101	<b>21</b> 12-4 p.m. Intro to Pastel
<b>22</b>	<b>23</b> 6-8:30 p.m. Beg. Pottery Wheel 6-8:30 p.m. Weaving 201	<b>24</b> 1-3:30 p.m. Beg. Pottery Wheel 1-3:30 p.m. Personal weaving 6-8 p.m. Mosaic- Italian Style	<b>25</b> 1-3:30 p.m. Handbuilding Clay 6-8:30 p.m. Art of Raku	<b>26</b> 1-3:30 p.m. Int. Pottery Wheel 6-8:30 p.m. Intro to drawing I	<b>27</b>	<b>28</b> 11 a.m.-4 p.m. Intro to Natural Dyes Native & Historic
<b>29</b>	<b>30</b> 6-8:30 p.m. Beg. Pottery Wheel 6-8:30 p.m. Weaving 201	<b>31</b> 1-3:30 p.m. Beg. Pottery Wheel 1-3:30 p.m. Personal weaving				

# NOVEMBER

SUNDAY	MONDAY	TUESDAY	WEDNESDAY	THURSDAY	FRIDAY	SATURDAY
			<b>1</b> 1-3:30 p.m. Handbuilding Clay 6-8:30 p.m. Art of Raku 6-8:30 p.m. Painting Fall Colors in Pastels	<b>2</b> 12-4 p.m. Soldering Crash Course	<b>3</b> 10 a.m. - 4 p.m. Still Life with Collage 12-4 p.m. Soldering Crash Course	<b>4</b> 12-4 p.m. Clay Date for Kids ; Build a Giant Mug 11 a.m.- 4 p.m. Traditional Woven Star 12-4 p.m. Soldering Crash Course
<b>5</b>	<b>6</b>	<b>7</b> 6-8:30 p.m. Intro to drawing II	<b>8</b> 6-8:30 p.m. Art of Raku 6-8:30 p.m. Painting Fall Colors in Pastels	<b>9</b>	<b>10</b> <b>CLOSED</b> Veterans Day	<b>11</b> <b>CLOSED</b>
<b>12</b>	<b>13</b>	<b>14</b> 6-8:30 p.m. Intro to drawing II	<b>15</b> 6-8:30 p.m. Art of Raku	<b>16</b> 12-4 p.m. Cold Connections!	<b>17</b> 12-4 p.m. Cold Connections!	<b>18</b> 12-4 p.m. Cold Connections! 11 a.m. - 4 p.m. Linoleum Block Print Holiday Notecard
<b>19</b>	<b>20</b>	<b>21</b> 6-8:30 p.m. Intro to drawing II	<b>22</b>	<b>23</b> <b>CLOSED</b> Thanksgiving	<b>24</b> <b>CLOSED</b>	<b>25</b> <b>CLOSED</b>
<b>26</b>	<b>27</b>	<b>28</b> 6-8:30 p.m. Intro to drawing II	<b>29</b>	<b>30</b>		

# About Us

The WaterWorks Art Center is a renovated facility spanning 7,300 square feet located just one mile west of the BOK Center in Downtown Tulsa. It aims to provide visual fine arts experiences, hands-on classes, and quality art exhibits to Tulsa and neighboring communities.



## Contact Us:

WaterWorks Art Center  
1710 Charles Page Blvd.  
Tulsa, OK 74127

Phone: (918) 596-2440

Fax: (918) 596-2442

[www.cityoftulsa.org/waterworks](http://www.cityoftulsa.org/waterworks)

[www.waterworksartcenter.com](http://www.waterworksartcenter.com)

## Find, Follow & Share:

@WaterWorksArtCenter

@TulsaParks

Visit [guide.tulsaparks.org](http://guide.tulsaparks.org) for classes and programs offered for all of our parks and community centers!