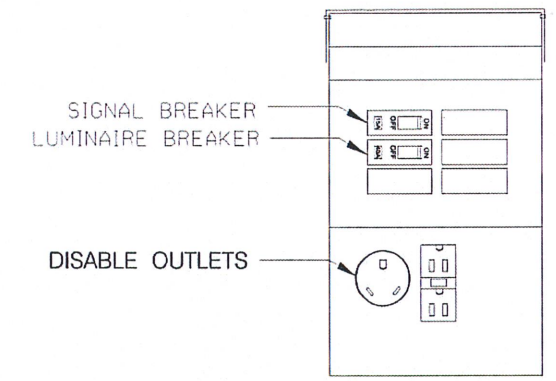
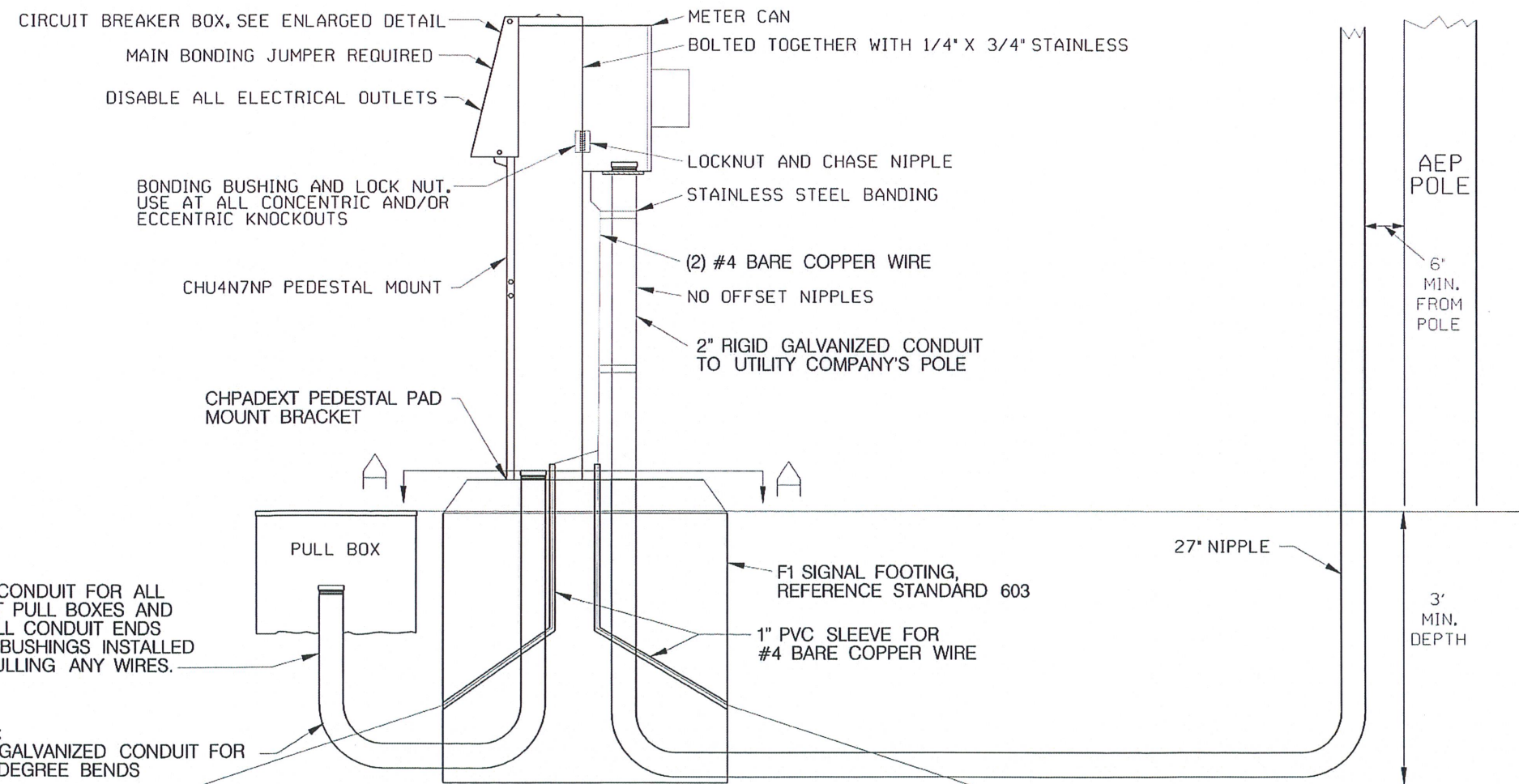


NOTE:
 (2) 5/8"x 8' COPPER CLAD GROUND RODS SPACED 6FT APART ARE REQUIRED FOR ALL SERVICES. #4 BARE COPPER WIRE SHALL BE BONDED AND CONNECTED FROM SERVICE TO EACH GROUND ROD.

PEDESTAL SERVICE INSTALLATION - SECTION A-A



NOTE:
 LABELS SHALL BE ADDED FOR ALL SERVICE DISCONNECTS

CIRCUIT BREAKER BOX AND SERVICE DISCONNECTS

TYPICAL:
 USE 2" PVC CONDUIT FOR ALL STUB UPS AT PULL BOXES AND FOOTINGS. ALL CONDUIT ENDS SHALL HAVE BUSHINGS INSTALLED PRIOR TO PULLING ANY WIRES.

TYPICAL:
 USE 2" GALVANIZED CONDUIT FOR ALL 90 DEGREE BENDS

PEDESTAL SERVICE INSTALLATION

(2) 5/8"x 8' COPPER CLAD GROUND RODS SPACED 6FT APART ARE REQUIRED FOR ALL SERVICES. #4 BARE COPPER WIRE SHALL BE BONDED AND CONNECTED FROM SERVICE TO EACH GROUND ROD.

REVISION	BY	DATE

Tull
 CITY ENGINEER

Kenneth W. Tull
 CITY TRAFFIC ENGINEER

CITY OF TULSA, OKLAHOMA
 TRAFFIC SIGNAL PEDESTAL SERVICE
 DATE: OCTOBER 2024
 STD. 607B