

AS RECOMMENDED BY REVIEW COMMITTEE 11/14/24



AMENDED AND RESTATED TULSA INTERNATIONAL AIRPORT ECONOMIC DEVELOPMENT PROJECT PLAN

A PROJECT OF:

THE CITY OF TULSA

IN COOPERATION WITH:

TULSA COUNTY

TULSA INTERNATIONAL AIRPORT DEVELOPMENT TRUST

TULSA AIRPORTS IMPROVEMENT TRUST

WITH THE ASSISTANCE OF:

ALEXIS HIGGINS, A.A.E. – CHIEF EXECUTIVE OFFICER

DANIEL REGAN – DIRECTOR OF REAL ESTATE AND DEVELOPMENT

JEFF SHAW – DIRECTOR OF RISK AND LEGAL SERVICES

AND:



CENTER FOR ECONOMIC
DEVELOPMENT LAW

EMILY K. POMEROY, PRESIDENT | 301 NORTH HARVEY, SUITE 200
(405) 232-3606 | OKLAHOMA CITY, OK 73102

AMENDED AND RESTATED
TULSA INTERNATIONAL AIRPORT ECONOMIC DEVELOPMENT PROJECT PLAN

I. DESCRIPTION OF PROJECT

As the hub of aerospace activity for the region, Tulsa International Airport (“Airport” or “TUL”) seeks to continue and expand its support of the growth of the aerospace industry by generating development on the Airport’s 700+ acres of property. Aerospace is one of the State’s largest industries, and Tulsa is ranked eighth nationally for the size of its aerospace engines manufacturing cluster and twentieth for its defense-related cluster. TUL’s central location in the Midwest is easily accessible by a multi-modal transportation network.

The purpose of this Project Plan is to provide a planning framework and funding mechanism for a substantial portion of the local public investment required to support the area’s aerospace economy and to generate additional, related private investment in the area. New public infrastructure—from taxilanes, hangars, and storage facilities to water and sewer lines, access roads, and building pads—is essential to both the public and private developments in the Airport area. While the cost of this infrastructure is substantial (approx. \$1150 Million), so is the potential new private investment (upwards of \$5 Billion). A single development or expansion by a commercial aviation company could generate private investment of over \$200–300 Million, and a single industrial development adjacent to the airport could generate private investment of over \$1 Billion. Multiple, smaller commercial developments are possible under this Project Plan, including hotels, offices, and retail establishments.

An integral part of the development strategy will be the negotiation of agreements under which private development commitments will be secured in exchange for the public investments. One element of this will be the appropriate disposition of publicly-owned property by lease or sale, to convert undeveloped or underdeveloped land into revenue-generating property. Another element will be to promote the development and construction of privately-owned buildings and other improvements on property that remains in public ownership. Such private improvements will generate tax increments, which will produce funding for the public costs of development.

Implementation of the Project Plan will help the Airport achieve its objectives of diversifying its revenue sources, maintaining its facilities, and supporting air service development. By enhancing the tax base, the Airport Project Plan will have a long-term positive impact on all the affected taxing jurisdictions and will improve the quality of life for residents of the City of Tulsa and Tulsa County.

II. BOUNDARIES OF PROJECT AREA AND INCREMENT DISTRICTS

The Project Area is the area in which Project activities will take place and Project Costs will be incurred. The Project Area can be generally described as the area bounded by North Port Road, East 56th Street North, Highway 169, portions of Pine Street and Interstate-244, and extending just a little west of Sheridan Road. The legal description of the Project Area is contained on Exhibit A.

The Increment Districts will generate the revenues to assist in paying or financing eligible Project Costs. For purposes of this Project Plan document, the Increment Districts shall be referred to as Increment Districts A, B, C, D, and E, (and collectively referred to as the “Increment Districts”). Once the commencement date of each Increment District is determined, the Increment District shall be renamed

as “Increment District Number _____, City of Tulsa” or “Increment District Number _____, Tulsa County,” as appropriate, by assigning the next consecutive number for increment districts of the City of Tulsa or Tulsa County, in accordance with 62 O.S. §856(3). The legal descriptions of Increment Districts are contained on Exhibit B. The boundaries of the Project Area and Increment Districts are illustrated on Exhibit C.

In accordance with the legislative guideline found in 62 O.S. §852(2), areas where investment, development, and economic growth would occur anyway have been excluded.

III. ELIGIBILITY OF PROJECT AREA

The Project Area qualifies as an enterprise area, as defined by 62 O.S. § 853(6), because it lies within an enterprise zone designated by the Oklahoma Department of Commerce. The Project Area also qualifies as a reinvestment area, as defined by 62 O.S. § 853(17), due to the need for public improvements to catalyze the development of the area.

IV. OBJECTIVES

The principal objectives of the Project and the Increment Districts are:

- A. To facilitate the development of property at the Airport, thus helping to diversify the revenue sources that support the ongoing costs of operating, maintaining, and improving Airport facilities.
- B. To provide a funding mechanism for a substantial portion of the local public investment required to support the Airport’s aerospace economy.
- C. To support the existing major businesses and employers in the Project Area.
- D. To serve as a catalyst for retaining or expanding employment, to attract major investment in the area, and reverse economic stagnation.
- E. To preserve and enhance the tax base and make possible investment, development, and economic growth that would otherwise be difficult without the Project and the apportionment of incremental sales tax revenues.
- F. To stimulate private commitments to invest and reinvest in the Project Area.
- G. To create and expand commercial activities in the area, including hotels, retail, and travel and tourism related attractions and amenities.

V. STATEMENT OF PRINCIPAL ACTIONS

Implementation actions for the Project, including all necessary, appropriate and supportive steps will consist principally of the following, to be undertaken primarily by the Tulsa International Airport Development Trust (“TIADT”):

- A. Project planning, design, and approval.

B. Coordination and cooperation between Tulsa County, the City of Tulsa, and the appropriate City Trusts for joint and/or coordinated endeavors under this Project Plan, including through appropriate interlocal agreements.

C. Construction and/or repair of public improvements, streets, streetscapes, utilities and other public infrastructure and facilities, including but not limited to taxilanes, access roads, water and sewer lines, and sidewalks.

D. Preparation of development sites, including by grading, constructing building pads, and providing utilities and infrastructure.

E. Negotiation of development agreements, leases, and other contracts under which private development commitments will be secured in exchange for the public investments.

VI. ESTABLISHMENT OF THE INCREMENT DISTRICTS

A. This Project Plan creates five increment districts, three of which are ad valorem tax increment districts and two of which are sales, hotel, and ad valorem tax increment districts. Each increment district shall commence as of the date determined by the City Council of the City of Tulsa, and as authorized by the Tulsa County Commissioners, for that district in accordance with 62 O.S. § 856(B) within thirty days of request by TIADT.

1. The increment of ad valorem taxes from Increment District A in excess of the base assessed value of Increment District A may be apportioned from time to time to pay Project Costs (as defined in Section VIII, below) authorized by Section VIII of this Plan for a period not to exceed 25 fiscal years or the period required for the payment of such authorized Project Costs, whichever is less.

2. The increment of City of Tulsa sales and hotel taxes generated by Increment District A, as determined by a formula to be approved by resolution of the Tulsa City Council in accordance with the Local Development Act, may be used to pay Project Costs authorized pursuant to Section VIII of this Plan, for a period not to exceed 25 fiscal years from the effective date of Increment District A, as provided by law, or the period required for payment of the Project Costs authorized pursuant to Section VIII of this Plan, whichever is less. "Sales" and "use" taxes include all proceeds and receipts derived from all sales taxable under the sales tax code of Oklahoma (which include but are not limited to sales of construction materials).

3. The increment of ad valorem taxes from Increment District B in excess of the base assessed value of Increment District B may be apportioned from time to time to pay Project Costs (as defined in Section VIII, below) authorized by Section VIII of this Plan for a period not to exceed 25 fiscal years or the period required for the payment of such authorized Project Costs, whichever is less.

4. The increment of City of Tulsa sales and hotel taxes generated by Increment District B, as determined by a formula to be approved by resolution of the Tulsa City Council in accordance with the Local Development Act, may be used to pay Project Costs authorized pursuant to Section VIII of this Plan, for a period not to exceed 25 fiscal years from the effective date of Increment District B or such balance of Increment District B's effective life after it has been

made effective as may be remaining when the Tulsa City Council approves such formula, as provided by law, or the period required for payment of the Project Costs authorized pursuant to Section VIII of this Plan, whichever is less. "Sales" and "use" taxes include all proceeds and receipts derived from all sales taxable under the sales tax code of Oklahoma (which include but are not limited to sales of construction materials).

5. The increment of ad valorem taxes from Increment District C in excess of the base assessed value of Increment District C may be apportioned from time to time to pay Project Costs (as defined in Section VIII, below) authorized by Section VIII of this Plan for a period not to exceed 25 fiscal years or the period required for the payment of such authorized Project Costs, whichever is less.

6. The increment of ad valorem taxes from Increment District D in excess of the base assessed value of Increment District D may be apportioned from time to time to pay Project Costs (as defined in Section VIII, below) authorized by Section VIII of this Plan for a period not to exceed 25 years or the period required for the payment of such authorized Project Costs, whichever is less.

7. The increment of City of Tulsa sales and hotel taxes generated by Increment District D, as determined by a formula to be approved by resolution of the Tulsa City Council in accordance with the Local Development Act, may be used to pay Project Costs authorized pursuant to Section VIII of this Plan, for a period not to exceed 25 fiscal years from the effective date of Increment District D, as provided by law, or the period required for payment of the Project Costs authorized pursuant to Section VIII of this Plan, whichever is less. "Sales" and "use" taxes include all proceeds and receipts derived from all sales taxable under the sales tax code of Oklahoma (which include but are not limited to sales of construction materials).

8. The increment of ad valorem taxes from Increment District E in excess of the base assessed value of Increment District E may be apportioned from time to time to pay Project Costs (as defined in Section VIII, below) authorized by Section VIII of this Plan for a period not to exceed 25 fiscal years or the period required for the payment of such authorized Project Costs, whichever is less.

9. The increment of City of Tulsa sales and hotel taxes generated by Increment District E, as determined by a formula to be approved by resolution of the Tulsa City Council in accordance with the Local Development Act, may be used to pay Project Costs authorized pursuant to Section VIII of this Plan, for a period not to exceed 25 fiscal years from the effective date of Increment District E, as provided by law, or the period required for payment of the Project Costs authorized pursuant to Section VIII of this Plan, whichever is less. "Sales" and "use" taxes include all proceeds and receipts derived from all sales taxable under the sales tax code of Oklahoma (which include but are not limited to sales of construction materials).

B. During the period of apportionment, the apportionment fund (1) shall be available to pay Project Costs under Section VIII, (2) shall constitute special funds of TIADT, and (3) shall not be subject to annual appropriation as a part of the general fund of the City.

VII. PROJECT AND INCREMENT DISTRICT AUTHORIZATIONS

A. TIADT is designated and authorized as the principal public entity to carry out and administer the provisions of this Project Plan and to exercise all powers necessary or appropriate thereto as provided in the Local Development Act, 62 O.S. § 854. TIADT, or another public entity designated by the City, is authorized and designated to carry out those provisions of the Project related to issuance of bonds or notes as provided in 62 O.S. §§ 854(B) and 863 of the Local Development Act, subject to approval of the governing body of the City of any specific notes or bonds. Such public entity of the City is authorized to assist in carrying out this Project Plan and to exercise all powers necessary or appropriate thereto pursuant to Sections 854, Title 62 of the Oklahoma Statutes, except for approval of this Project Plan and those powers enumerated in paragraphs 1, 2, 3, 4, 7, 13 and 16 of Section 854, Title 62. As a public entity designated by the City, the TIADT, or another public entity designated by the City is authorized to: (1) issue tax apportionment bonds or notes, or both; (2) incur Project Costs, pursuant to Section VIII of this Project Plan; (3) provide funds to or reimburse TAIT or the City for the payment of Project Costs and other costs incurred in support of the implementation of the Project; and (4) incur the cost of issuance of bonds for payment of such costs and to accumulate appropriate reserves, if any, in connection with them. Project Costs shall mean (a) the public costs authorized to be paid by apportioned tax increments pursuant to Section VIII of this Project Plan, and (b) costs necessary or appropriate to implement this Project Plan other than costs authorized by Section VIII, which may be authorized without amendment to this Project Plan.

B. The Tulsa Airports Improvement Trust, a public trust (“TAIT”), is authorized and designated as an additional public entity to assist in carrying out the provisions of this Project Plan and to incur Project Costs with respect to airport improvements and operations within its responsibilities, in accordance with budgetary allocations for such activities approved in accordance with this Project Plan and development agreements approved by TIADT as authorized by this Project Plan. Any Project Costs incurred by TAIT will be reimbursed by TIADT.

C. The Director of Airports, Alexis Higgins, her successor in office, or her designee shall be the person in charge of implementation of the Project Plan in accordance with the provisions, authorizations, and respective delegations of responsibilities contained in this Project Plan. The Director of Airports, her successor in office, or her designee is authorized to empower one or more designees to exercise responsibilities in connection with Project implementation.

VIII. BUDGET OF ESTIMATED PROJECT COSTS TO BE FINANCED BY TAXES APPORTIONED FROM THE INCREMENT DISTRICTS

A. Project Costs.

The Project Costs will be financed by the apportionment of tax increments from Increment Districts. Project Costs are expected to be incurred throughout the Project Area in these categories:

Public Improvements and Infrastructure	\$	150,000,000.00
Development Financing Assistance	\$	820,000,000.00
Project Implementation and Contingency	\$	<u>5,000,000.00</u>

TOTAL	\$	975,000,000.00
-------	----	----------------

plus financing costs, costs of issuance, necessary or appropriate reserves, and interest on repayment of Project Costs.

B. Generation of Revenue.

The revenues expected to be generated from the Increment Districts within the Project Area and authorized for payment of Project Costs throughout the Project Area are as follows:

Increment District A	\$	140,000,000.00
Increment District B	\$	485,000,000.00
Increment District C	\$	25,000,000.00
Increment District D	\$	35,000,000.00
Increment District E	\$	<u>290,000,000.00</u>
TOTAL	\$	975,000,000.00

plus revenues sufficient to cover financing costs, costs of issuance, necessary or appropriate reserves, and interest on repayment of Project Costs, allocated appropriately to the Increment Districts.

c. Additional Costs.

Additional costs necessary or appropriate to implement this Project Plan that are to be financed by other than apportioned tax increments may be approved by the TIADT at any time. The provisions of this Section VIII are not a limitation on Project Costs to be financed by other than apportioned sales tax increments.

IX. FINANCING REVENUE SOURCES

A. Financing Authorizations.

The implementation of the Project Plan shall be financed in accordance with financial authorizations, including both fund and asset transfers, authorized from time to time by the TIADT.

B. Financing Revenue Sources.

The revenue sources expected to finance Project Costs authorized by Section VIII are the portion of the increments attributable to investment and development within each Increment District. Project Costs will be paid by the City and/or the TIADT.

c. Financial Reports and Audits.

The development activities undertaken by the TIADT, pursuant to this Project Plan, shall be accounted for and reported by the appropriate and necessary annual fiscal year audits and reports.

D. Other Necessary and Supporting Costs.

The TIADT, or another public entity designated by the City pursuant to Section VII, is authorized to issue bonds and notes and to apply for and obtain grants from other sources for costs incurred or to be incurred in connection with the project and the construction of improvements therein in addition to Project Costs to be financed pursuant to Section VIII.

X. PRIVATE AND PUBLIC INVESTMENTS EXPECTED FOR THE PROJECT;
FINANCIAL AND BUSINESS IMPACTS

A. Private and Public Investments Expected from the Project and
Increment District Nos. A through E.

The total estimated private investment is approximately \$5 Billion, in addition to an estimated \$400 Million in aggregate public investment, including federal funds. Private investment in the area is expected to consist of business and commercial development. Public investment will include infrastructure improvements, especially taxilanes, access roads, water and sewer lines, electricity infrastructure, natural gas infrastructure and sidewalks, as well as development financing assistance on appropriate private projects.

B. Public Revenue Estimated to Accrue from the Project and Increment
District Nos. A through E.

The estimated increase in tax increment revenues—including ad valorem, sales, and hotel tax increment revenues—which will serve as the revenue source for financing the Project Costs authorized by Section VIII, is the public revenue directly attributable to the Project defined by establishment of the Increment Districts. The City and the State will experience increases in sales and hotel tax revenues that are not a part of the increment. Ad valorem taxing entities will experience additional revenues from increasing values near and adjacent to the Project.

The estimated increase in sales tax revenue from the purchase of materials used in construction is estimated to total \$13.9 million for the State, \$1.1 million for the County and \$11.3 million for the City for new real capital investment in the Incentive District. Ad valorem revenues are estimated to be approximately \$39.2 million when all the capital investment improvements are completed, and depreciation is expected to reduce that figure to \$33.5 million in the final year of the twenty-five (25) year lifespan of the Increment Districts. This assumes that personal property is refreshed every five years after it is obsolete. Total ad valorem revenues generated from \$5 billion in new capital investment are estimated to be \$777.9 million over the twenty-five (25) year lifespans of all of the Increment Districts.

c. Financial and Business Impacts.

1. Economic Impacts and Impacts on Business Activities. New capital investment totaling \$5 billion will have sizeable impact on construction activity in the region. From a Regional Economic Modeling Inc. (REMI) economic impact model, for every \$100 million in construction activity, approximately 1,200 jobs are anticipated to be created in the region, and Personal Income is anticipated to be \$90-\$100 million higher. Economic activity generated by this capital investment is expected to add

\$140-\$160 million annually to the region’s production output, and this is only activity associated with new capital investment. The employment, income and economic activity will be even greater with the productive use of the assets.

	Year 1	Year 2	Year 3	Year 4	Year 5
Total Employment	1,202	1,248	1,236	1,176	1,099
Regional GDP	\$89,978,500	\$94,736,800	\$95,616,400	\$92,888,500	\$88,660,300
Regional Output	\$162,586,800	\$170,493,100	\$171,278,800	\$165,840,300	\$157,878,900
Regional Personal Income	\$83,219,200	\$94,807,400	\$101,677,800	\$104,325,100	\$104,578,100

2. Impacts on Taxing Jurisdictions. Under the Project Plan, all increment revenues will be apportioned to the Apportionment Fund for use by the Tulsa International Airport Development Trust to pay for authorized project costs. Increments will not be subject to annual appropriation as part of the general fund of the City or County. When the Increment Districts have terminated, the increments shall be distributed pursuant to the applicable ad valorem and sales tax statutes. The benefits of the project will be significant for the taxing jurisdictions in which the project area and districts are located and for the community as a whole. The actual increase in demand for services upon those taxing jurisdictions that the proposed developments represent, if any, is extremely limited.

a. *Tulsa Public Schools.* The business and commercial redevelopment which is a primary goal of this project is unlikely to generate any measurable increased demand upon services for Tulsa Public Schools, as the residential population within the Project Area will not increase from the proposed development. In addition, the growth in the number of jobs and individual income will have positive economic impacts outside the Increment Districts. The Local Development Act specifically provides that, for purposes of calculating state school aid, only the base assessed value shall be used and increases above the base assessed value must be disregarded. Therefore, the increase in assessed values in the Increment Districts will not negatively impact Tulsa Public Schools’ state aid.

b. *Tulsa County.* No specific measurable demand for increased services upon Tulsa County is anticipated to result from this project.

c. *Tulsa Health Department.* The Tulsa Health Department is negatively impacted by unemployment and underemployment. New employment can create only positive impacts upon this taxing jurisdiction. The proposed Project is estimated to produce substantial new employment, as discussed in Section IV herein.

d. *Tulsa City-County Library.* The proposed commercial and industrial development to be stimulated by the project will likely not contribute to immediate, day-to-day clientele for the Library system.

e. *Tulsa Technology Center.* The nature of the project makes it likely to create some increased demand for training by Tulsa Technology Center. Any increased demand for job training occasioned by the project is likely to be complementary in its impact upon Tulsa Tech.

f. *Tulsa Community College*. The business and commercial redevelopment which is a primary goal of this project is unlikely to generate any increased demand upon services for Tulsa Community College.

XI. FINANCING PLAN

The proposed private developments will generate tax increments necessary to pay authorized public costs of the Project.

XII. LAND USE

Existing uses and conditions of real property in the Project Area are shown on the map attached as Exhibit D. The proposed improvements to and the proposed uses of the real property in the Project Area are shown on Exhibit E.

XIII. MISCELLANEOUS PROVISIONS

No changes in zoning are anticipated to be necessary to accommodate this Project. This Project Plan complies with the objectives and priorities of the Comprehensive Plan of the City of Tulsa, as amended, and the general objectives and priorities of Tulsa County.

EXHIBIT A:
PROJECT AREA LEGAL DESCRIPTION

A TRACT OF LAND BEING A PART OF SECTIONS 7, 8, 18, 19, 30, and 31 in Township 20 N., Range 14 E., TULSA COUNTY, OKLAHOMA, and SECTIONS 12, 13, 14, 15, 22, 23, 24, 25, 26, 27, 35 and 36 in TOWNSHIP 20 N., RANGE 13 E., TULSA COUNTY, OKLAHOMA,
MORE PARTICULARLY DESCRIBED TO WIT:

COMMENCING AT THE SOUTHWEST CORNER OF SECTION 26:
THENCE EAST A DISTANCE OF 1,317.095 FEET TO THE
"POINT OF BEGINNING";

THENCE N. 88°50'32" E. A DISTANCE OF 3,478.59 FEET;
THENCE S. 02°03'10" E. A DISTANCE OF 52.17 FEET;
THENCE S. 01°15'47" E. A DISTANCE OF 79.47 FEET;
THENCE S. 01°15'40" E. A DISTANCE OF 64.62 FEET;
THENCE S. 01°15'53" E. A DISTANCE OF 64.34 FEET;
THENCE S. 01°16'10" E. A DISTANCE OF 68.04 FEET;
THENCE S. 01°16'29" E. A DISTANCE OF 78.83 FEET;
THENCE S. 01°16'47" E. A DISTANCE OF 95.80 FEET;
THENCE S. 01°32'12" E. A DISTANCE OF 86.92 FEET;
THENCE N. 88°49'51" E. A DISTANCE OF 73.53 FEET;
THENCE N. 88°49'44" E. A DISTANCE OF 88.77 FEET;
THENCE N. 88°49'29" E. A DISTANCE OF 56.74 FEET;
THENCE N. 88°49'07" E. A DISTANCE OF 63.13 FEET;
THENCE N. 88°48'36" E. A DISTANCE OF 61.84 FEET;
THENCE N. 88°41'33" E. A DISTANCE OF 65.24 FEET;
THENCE S. 04°35'21" E. A DISTANCE OF 121.77 FEET;
THENCE S. 00°14'50" E. A DISTANCE OF 49.18 FEET;
THENCE S. 01°32'36" E. A DISTANCE OF 124.53 FEET;
THENCE S. 01°32'28" E. A DISTANCE OF 116.65 FEET;
THENCE S. 01°23'17" E. A DISTANCE OF 49.36 FEET;
THENCE S. 01°20'42" E. A DISTANCE OF 123.12 FEET;
THENCE S. 01°20'56" E. A DISTANCE OF 117.94 FEET;
THENCE S. 14°03'18" E. A DISTANCE OF 30.58 FEET;
THENCE S. 14°03'18" E. A DISTANCE OF 31.14 FEET;
THENCE S. 01°06'28" E. A DISTANCE OF 113.93 FEET;
THENCE S. 01°06'18" E. A DISTANCE OF 121.03 FEET;
THENCE S. 02°08'03" E. A DISTANCE OF 48.37 FEET;
THENCE S. 00°01'41" E. A DISTANCE OF 119.45 FEET;
THENCE S. 02°14'55" E. A DISTANCE OF 118.52 FEET;
THENCE S. 02°14'55" E. A DISTANCE OF 52.42 FEET;
THENCE S. 01°29'28" E. A DISTANCE OF 119.12 FEET;
THENCE S. 01°29'22" E. A DISTANCE OF 122.70 FEET;

THENCE S. 00°04'02" E. A DISTANCE OF 47.72 FEET;
THENCE S. 00°48'55" E. A DISTANCE OF 120.13 FEET;
THENCE S. 01°42'30" E. A DISTANCE OF 118.31 FEET;
THENCE S. 01°42'30" E. A DISTANCE OF 50.28 FEET;
THENCE S. 01°29'23" E. A DISTANCE OF 139.49 FEET;
THENCE S. 01°18'13" E. A DISTANCE OF 137.02 FEET;
THENCE S. 01°09'46" E. A DISTANCE OF 50.31 FEET;
THENCE S. 01°09'51" E. A DISTANCE OF 132.21 FEET;
THENCE S. 01°09'22" E. A DISTANCE OF 163.36 FEET;
THENCE S. 01°03'04" E. A DISTANCE OF 63.42 FEET;
THENCE S. 00°55'17" E. A DISTANCE OF 165.70 FEET;
THENCE S. 00°55'40" E. A DISTANCE OF 130.89 FEET;
THENCE S. 01°23'22" E. A DISTANCE OF 50.10 FEET;
THENCE S. 01°19'17" E. A DISTANCE OF 130.89 FEET;
THENCE S. 01°29'02" E. A DISTANCE OF 123.77 FEET;
THENCE S. 01°29'02" E. A DISTANCE OF 51.99 FEET;
THENCE S. 00°46'50" E. A DISTANCE OF 66.18 FEET;
THENCE S. 00°46'24" E. A DISTANCE OF 54.30 FEET;
THENCE N. 88°53'35" E. A DISTANCE OF 53.73 FEET;
THENCE S. 01°20'28" E. A DISTANCE OF 977.80 FEET;
THENCE S. 01°20'33" E. A DISTANCE OF 345.70 FEET;
THENCE S. 01°17'27" E. A DISTANCE OF 270.23 FEET;
THENCE S. 89°37'01" E. A DISTANCE OF 50.16 FEET;
THENCE S. 89°37'01" E. A DISTANCE OF 289.98 FEET;
THENCE S. 89°37'01" E. A DISTANCE OF 76.14 FEET;
THENCE N. 88°56'25" E. A DISTANCE OF 334.22 FEET;
THENCE N. 88°53'45" E. A DISTANCE OF 176.63 FEET;
THENCE N. 86°29'24" E. A DISTANCE OF 203.83 FEET;
THENCE N. 84°21'20" E. A DISTANCE OF 187.43 FEET;
THENCE N. 82°30'38" E. A DISTANCE OF 221.21 FEET;
THENCE N. 79°47'31" E. A DISTANCE OF 276.84 FEET;
THENCE N. 78°10'12" E. A DISTANCE OF 178.01 FEET;
THENCE N. 74°34'10" E. A DISTANCE OF 325.11 FEET;
THENCE N. 73°45'52" E. A DISTANCE OF 122.57 FEET;
THENCE N. 74°39'22" E. A DISTANCE OF 186.06 FEET;
THENCE N. 01°50'42" W. A DISTANCE OF 232.14 FEET;
THENCE N. 81°42'51" E. A DISTANCE OF 42.30 FEET;
THENCE S. 87°00'28" E. A DISTANCE OF 39.32 FEET;
THENCE N. 01°25'06" W. A DISTANCE OF 99.23 FEET;
THENCE N. 01°24'48" W. A DISTANCE OF 101.34 FEET;
THENCE N. 01°24'48" W. A DISTANCE OF 98.99 FEET;
THENCE N. 01°24'48" W. A DISTANCE OF 98.12 FEET;
THENCE N. 01°15'15" W. A DISTANCE OF 59.46 FEET;
THENCE N. 01°39'40" W. A DISTANCE OF 134.64 FEET;

THENCE N. 01°39'40" W. A DISTANCE OF 164.22 FEET;
THENCE N. 01°39'35" W. A DISTANCE OF 166.04 FEET;
THENCE N. 01°39'35" W. A DISTANCE OF 133.15 FEET;
THENCE N. 00°48'13" W. A DISTANCE OF 61.65 FEET;
THENCE N. 01°39'25" W. A DISTANCE OF 136.16 FEET;
THENCE N. 01°39'28" W. A DISTANCE OF 161.97 FEET;
THENCE N. 01°39'28" W. A DISTANCE OF 83.60 FEET;
THENCE N. 01°39'39" W. A DISTANCE OF 85.10 FEET;
THENCE N. 01°39'35" W. A DISTANCE OF 135.86 FEET;
THENCE N. 01°56'19" W. A DISTANCE OF 60.34 FEET;
THENCE N. 01°17'33" W. A DISTANCE OF 135.06 FEET;
THENCE N. 01°17'38" W. A DISTANCE OF 205.07 FEET;
THENCE N. 01°17'38" W. A DISTANCE OF 129.77 FEET;
THENCE N. 01°17'38" W. A DISTANCE OF 129.66 FEET;
THENCE N. 08°11'37" E. A DISTANCE OF 31.58 FEET;
THENCE N. 08°12'08" E. A DISTANCE OF 24.68 FEET;
THENCE N. 00°41'34" W. A DISTANCE OF 117.34 FEET;
THENCE N. 00°41'34" W. A DISTANCE OF 123.30 FEET;
THENCE N. 01°23'50" W. A DISTANCE OF 50.02 FEET;
THENCE N. 00°06'41" E. A DISTANCE OF 119.01 FEET;
THENCE N. 01°41'48" W. A DISTANCE OF 123.45 FEET;
THENCE N. 01°41'48" W. A DISTANCE OF 52.11 FEET;
THENCE N. 00°56'53" W. A DISTANCE OF 118.63 FEET;
THENCE N. 00°56'50" W. A DISTANCE OF 124.00 FEET;
THENCE N. 00°22'58" W. A DISTANCE OF 51.81 FEET;
THENCE N. 00°22'58" W. A DISTANCE OF 118.03 FEET;
THENCE N. 01°03'55" W. A DISTANCE OF 125.61 FEET;
THENCE N. 03°08'47" E. A DISTANCE OF 50.23 FEET;
THENCE N. 00°06'07" W. A DISTANCE OF 131.17 FEET;
THENCE N. 01°26'23" W. A DISTANCE OF 132.37 FEET;
THENCE N. 01°26'23" W. A DISTANCE OF 58.49 FEET;
THENCE N. 00°51'33" W. A DISTANCE OF 133.13 FEET;
THENCE N. 00°51'33" W. A DISTANCE OF 124.59 FEET;
THENCE N. 02°51'37" W. A DISTANCE OF 45.58 FEET;
THENCE N. 01°22'00" W. A DISTANCE OF 137.54 FEET;
THENCE N. 01°08'29" W. A DISTANCE OF 130.97 FEET;
THENCE N. 01°24'07" W. A DISTANCE OF 50.12 FEET;
THENCE N. 01°39'14" W. A DISTANCE OF 134.54 FEET;
THENCE N. 01°39'14" W. A DISTANCE OF 51.06 FEET;
THENCE N. 00°41'14" W. A DISTANCE OF 77.63 FEET;
THENCE N. 00°41'14" W. A DISTANCE OF 57.64 FEET;
THENCE N. 01°57'42" W. A DISTANCE OF 137.77 FEET;
THENCE S. 87°31'13" E. A DISTANCE OF 63.06 FEET;
THENCE N. 88°39'46" E. A DISTANCE OF 57.25 FEET;

THENCE N. 88°38'47" E. A DISTANCE OF 59.20 FEET;
THENCE N. 88°39'48" E. A DISTANCE OF 60.44 FEET;
THENCE N. 88°39'25" E. A DISTANCE OF 61.28 FEET;
THENCE N. 88°38'56" E. A DISTANCE OF 63.72 FEET;
THENCE N. 88°40'11" E. A DISTANCE OF 57.15 FEET;
THENCE N. 88°38'39" E. A DISTANCE OF 57.71 FEET;
THENCE N. 88°39'32" E. A DISTANCE OF 62.54 FEET;
THENCE N. 88°39'19" E. A DISTANCE OF 60.88 FEET;
THENCE N. 88°39'24" E. A DISTANCE OF 50.81 FEET;
THENCE N. 88°39'24" E. A DISTANCE OF 52.83 FEET;
THENCE N. 88°39'00" E. A DISTANCE OF 63.61 FEET;
THENCE N. 87°29'18" E. A DISTANCE OF 59.45 FEET;
THENCE N. 88°22'01" E. A DISTANCE OF 70.81 FEET;
THENCE N. 88°22'35" E. A DISTANCE OF 61.66 FEET;
THENCE N. 88°22'50" E. A DISTANCE OF 62.68 FEET;
THENCE N. 88°21'49" E. A DISTANCE OF 58.45 FEET;
THENCE N. 88°23'28" E. A DISTANCE OF 61.24 FEET;
THENCE N. 88°21'44" E. A DISTANCE OF 60.23 FEET;
THENCE N. 88°22'32" E. A DISTANCE OF 62.99 FEET;
THENCE N. 88°22'54" E. A DISTANCE OF 57.60 FEET;
THENCE N. 88°22'01" E. A DISTANCE OF 65.47 FEET;
THENCE N. 88°23'21" E. A DISTANCE OF 60.95 FEET;
THENCE N. 88°21'45" E. A DISTANCE OF 61.28 FEET;
THENCE N. 88°22'47" E. A DISTANCE OF 60.97 FEET;
THENCE N. 88°22'48" E. A DISTANCE OF 64.76 FEET;
THENCE N. 88°21'39" E. A DISTANCE OF 56.65 FEET;
THENCE N. 88°23'38" E. A DISTANCE OF 62.26 FEET;
THENCE N. 88°22'31" E. A DISTANCE OF 63.73 FEET;
THENCE N. 88°21'55" E. A DISTANCE OF 64.64 FEET;
THENCE N. 88°23'04" E. A DISTANCE OF 71.78 FEET;
THENCE N. 89°00'18" E. A DISTANCE OF 59.68 FEET;
THENCE N. 89°01'35" E. A DISTANCE OF 151.60 FEET;
THENCE N. 89°06'48" E. A DISTANCE OF 162.73 FEET;
THENCE N. 89°08'49" E. A DISTANCE OF 212.71 FEET;
THENCE S. 01°49'31" E. A DISTANCE OF 142.91 FEET;
THENCE S. 01°16'37" E. A DISTANCE OF 990.38 FEET;
THENCE S. 01°16'37" E. A DISTANCE OF 129.75 FEET;
THENCE S. 88°37'20" W. A DISTANCE OF 612.23 FEET;
THENCE S. 00°56'19" E. A DISTANCE OF 687.51 FEET;
THENCE S. 28°37'17" E. A DISTANCE OF 28.20 FEET;
THENCE S. 00°21'21" E. A DISTANCE OF 159.95 FEET;
THENCE S. 88°21'00" W. A DISTANCE OF 11.47 FEET;
THENCE S. 00°56'24" E. A DISTANCE OF 136.20 FEET;
THENCE S. 00°56'24" E. A DISTANCE OF 47.85 FEET;

THENCE S. 00°29'43" E. A DISTANCE OF 250.92 FEET;
THENCE S. 00°34'11" E. A DISTANCE OF 30.99 FEET;
THENCE S. 88°21'28" W. A DISTANCE OF 6.14 FEET;
THENCE S. 00°09'14" W. A DISTANCE OF 31.25 FEET;
THENCE S. 01°09'35" E. A DISTANCE OF 634.28 FEET;
THENCE S. 01°09'38" E. A DISTANCE OF 322.70 FEET;
THENCE N. 88°36'20" E. A DISTANCE OF 597.66 FEET;
THENCE S. 01°13'26" E. A DISTANCE OF 46.98 FEET;
THENCE N. 89°57'21" E. A DISTANCE OF 72.16 FEET;
THENCE S. 01°18'21" E. A DISTANCE OF 862.01 FEET;
THENCE N. 78°50'51" E. A DISTANCE OF 1,808.86 FEET;
THENCE N. 77°37'51" E. A DISTANCE OF 527.26 FEET;
THENCE N. 78°10'17" E. A DISTANCE OF 269.84 FEET;
THENCE N. 01°07'22" W. A DISTANCE OF 74.90 FEET;
THENCE N. 87°38'28" E. A DISTANCE OF 337.02 FEET;
THENCE N. 01°17'29" W. A DISTANCE OF 546.09 FEET;
THENCE N. 46°58'59" W. A DISTANCE OF 122.65 FEET;
THENCE N. 46°58'59" W. A DISTANCE OF 113.22 FEET;
THENCE N. 09°01'25" W. A DISTANCE OF 460.30 FEET;
THENCE N. 07°57'18" E. A DISTANCE OF 188.28 FEET;
THENCE N. 10°08'24" E. A DISTANCE OF 411.52 FEET;
THENCE N. 17°58'32" E. A DISTANCE OF 238.32 FEET;
THENCE N. 17°58'10" E. A DISTANCE OF 97.61 FEET;
THENCE N. 17°57'44" E. A DISTANCE OF 295.87 FEET;
THENCE N. 62°37'39" W. A DISTANCE OF 14.78 FEET;
THENCE N. 10°53'27" E. A DISTANCE OF 21.73 FEET;
THENCE N. 22°16'09" E. A DISTANCE OF 310.10 FEET;
THENCE N. 26°04'16" E. A DISTANCE OF 398.00 FEET;
THENCE N. 40°03'14" E. A DISTANCE OF 877.40 FEET;
THENCE S. 64°38'36" E. A DISTANCE OF 34.31 FEET;
THENCE S. 01°25'13" E. A DISTANCE OF 53.02 FEET;
THENCE N. 22°53'54" E. A DISTANCE OF 327.28 FEET;
THENCE N. 12°24'33" W. A DISTANCE OF 196.67 FEET;
THENCE N. 19°58'56" E. A DISTANCE OF 293.65 FEET;
THENCE N. 19°59'28" E. A DISTANCE OF 292.29 FEET;
THENCE N. 26°36'52" E. A DISTANCE OF 200.19 FEET;
THENCE N. 24°04'13" E. A DISTANCE OF 171.231 FEET;
THENCE N. 24°00'57" E. A DISTANCE OF 276.98 FEET;
THENCE N. 20°44'13" E. A DISTANCE OF 97.45 FEET;
THENCE N. 20°14'29" E. A DISTANCE OF 419.03 FEET;
THENCE N. 16°42'50" E. A DISTANCE OF 458.04 FEET;
THENCE N. 12°51'56" E. A DISTANCE OF 502.35 FEET;
THENCE N. 88°44'43" E. A DISTANCE OF 6.14 FEET;
THENCE N. 12°50'31" E. A DISTANCE OF 259.52 FEET;

THENCE N. 83°24'46" E. A DISTANCE OF 201.62 FEET;
THENCE N. 01°14'48" W. A DISTANCE OF 206.44 FEET;
THENCE N. 01°14'33" W. A DISTANCE OF 379.26 FEET;
THENCE N. 01°14'33" W. A DISTANCE OF 502.85 FEET;
THENCE N. 01°14'33" W. A DISTANCE OF 319.62 FEET;
THENCE N. 01°14'49" W. A DISTANCE OF 961.75 FEET;
THENCE N. 01°21'44" W. A DISTANCE OF 2,640.35 FEET;
THENCE N. 01°21'47" W. A DISTANCE OF 308.39 FEET;
THENCE N. 01°21'44" W. A DISTANCE OF 229.56 FEET;
THENCE N. 01°21'44" W. A DISTANCE OF 420.53 FEET;
THENCE N. 01°21'10" W. A DISTANCE OF 363.81 FEET;
THENCE N. 01°21'52" W. A DISTANCE OF 1,318.04 FEET;
THENCE N. 01°01'47" W. A DISTANCE OF 412.77 FEET;
THENCE N. 01°01'47" W. A DISTANCE OF 912.36 FEET;
THENCE N. 01°01'47" W. A DISTANCE OF 313.97 FEET;
THENCE N. 01°01'55" W. A DISTANCE OF 345.40 FEET;
THENCE N. 01°01'55" W. A DISTANCE OF 662.25 FEET;
THENCE N. 01°01'40" W. A DISTANCE OF 1,158.22 FEET;
THENCE N. 01°01'38" W. A DISTANCE OF 158.48 FEET;
THENCE N. 01°02'06" W. A DISTANCE OF 1,346.59 FEET;
THENCE N. 01°27'12" W. A DISTANCE OF 1,099.05 FEET;
THENCE N. 01°26'45" W. A DISTANCE OF 595.01 FEET;
THENCE N. 16°02'50" E. A DISTANCE OF 1,175.84 FEET;
THENCE N. 15°23'28" E. A DISTANCE OF 187.32 FEET;
THENCE N. 15°25'23" E. A DISTANCE OF 1,305.73 FEET;
THENCE N. 29°19'08" E. A DISTANCE OF 709.82 FEET;
THENCE N. 23°35'59" E. A DISTANCE OF 434.29 FEET;
THENCE S. 88°45'36" W. A DISTANCE OF 516.51 FEET;
THENCE S. 88°43'47" W. A DISTANCE OF 3,078.43 FEET;
THENCE S. 88°44'26" W. A DISTANCE OF 318.59 FEET;
THENCE S. 88°41'31" W. A DISTANCE OF 61.98 FEET;
THENCE S. 88°44'12" W. A DISTANCE OF 914.86 FEET;
THENCE S. 88°44'26" W. A DISTANCE OF 967.16 FEET;
THENCE S. 88°44'26" W. A DISTANCE OF 111.01 FEET;
THENCE S. 88°43'59" W. A DISTANCE OF 577.40 FEET;
THENCE S. 88°51'42" W. A DISTANCE OF 330.32 FEET;
THENCE S. 88°51'42" W. A DISTANCE OF 69.24 FEET;
THENCE S. 88°51'27" W. A DISTANCE OF 262.34 FEET;
THENCE S. 88°51'14" W. A DISTANCE OF 658.45 FEET;
THENCE S. 01°12'47" E. A DISTANCE OF 658.91 FEET;
THENCE N. 88°47'32" E. A DISTANCE OF 332.52 FEET;
THENCE S. 01°20'23" E. A DISTANCE OF 1,060.79 FEET;
THENCE S. 88°43'13" W. A DISTANCE OF 330.15 FEET;
THENCE S. 01°16'17" E. A DISTANCE OF 922.81 FEET;

THENCE S. 01°41'39" E. A DISTANCE OF 210.02 FEET;
THENCE S. 01°53'26" E. A DISTANCE OF 156.28 FEET;
THENCE S. 01°53'26" E. A DISTANCE OF 189.98 FEET;
THENCE S. 01°01'10" E. A DISTANCE OF 103.78 FEET;
THENCE S. 88°51'01" W. A DISTANCE OF 15.62 FEET;
THENCE S. 41°51'46" W. A DISTANCE OF 295.82 FEET;
THENCE S. 41°51'46" W. A DISTANCE OF 164.67 FEET;
THENCE S. 41°51'47" W. A DISTANCE OF 41.01 FEET;
THENCE N. 45°24'46" W. A DISTANCE OF 25.08 FEET;
THENCE S. 43°37'13" W. A DISTANCE OF 289.49 FEET;
THENCE S. 43°37'13" W. A DISTANCE OF 132.41 FEET;
THENCE S. 43°37'15" W. A DISTANCE OF 227.35 FEET;
THENCE S. 43°37'16" W. A DISTANCE OF 209.54 FEET;
THENCE S. 43°37'16" W. A DISTANCE OF 216.32 FEET;
THENCE S. 43°37'16" W. A DISTANCE OF 274.90 FEET;
THENCE S. 46°36'52" W. A DISTANCE OF 1,006.89 FEET;
THENCE S. 45°41'20" W. A DISTANCE OF 778.49 FEET;
THENCE S. 43°36'43" W. A DISTANCE OF 931.39 FEET;
THENCE S. 43°36'43" W. A DISTANCE OF 947.79 FEET;
THENCE S. 44°56'27" W. A DISTANCE OF 1,108.43 FEET;
THENCE S. 88°50'24" W. A DISTANCE OF 28.91 FEET;
THENCE S. 44°26'39" W. A DISTANCE OF 685.89 FEET;
THENCE S. 44°30'57" W. A DISTANCE OF 569.99 FEET;
THENCE S. 43°56'08" W. A DISTANCE OF 373.68 FEET;
THENCE S. 49°04'30" W. A DISTANCE OF 225.25 FEET;
THENCE S. 56°26'50" W. A DISTANCE OF 237.85 FEET;
THENCE S. 63°02'49" W. A DISTANCE OF 175.05 FEET;
THENCE S. 67°44'22" W. A DISTANCE OF 136.98 FEET;
THENCE S. 70°20'07" W. A DISTANCE OF 19.52 FEET;
THENCE S. 70°20'07" W. A DISTANCE OF 29.49 FEET;
THENCE S. 71°42'13" W. A DISTANCE OF 23.39 FEET;
THENCE S. 71°42'13" W. A DISTANCE OF 53.23 FEET;
THENCE S. 77°47'51" W. A DISTANCE OF 26.05 FEET;
THENCE S. 75°42'18" W. A DISTANCE OF 26.39 FEET;
THENCE S. 76°42'24" W. A DISTANCE OF 23.86 FEET;
THENCE S. 77°36'58" W. A DISTANCE OF 28.93 FEET;
THENCE S. 78°43'20" W. A DISTANCE OF 26.82 FEET;
THENCE S. 79°42'13" W. A DISTANCE OF 25.97 FEET;
THENCE S. 80°42'18" W. A DISTANCE OF 26.39 FEET;
THENCE S. 80°31'24" W. A DISTANCE OF 97.14 FEET;
THENCE S. 80°31'14" W. A DISTANCE OF 120.26 FEET;
THENCE S. 80°31'12" W. A DISTANCE OF 124.48 FEET;
THENCE S. 80°31'14" W. A DISTANCE OF 102.05 FEET;
THENCE S. 80°28'14" W. A DISTANCE OF 212.59 FEET;

THENCE S. 80°35'48" W. A DISTANCE OF 137.79 FEET;
THENCE S. 80°35'48" W. A DISTANCE OF 176.73 FEET;
THENCE S. 80°35'48" W. A DISTANCE OF 214.09 FEET;
THENCE S. 80°21'59" W. A DISTANCE OF 194.39 FEET;
THENCE S. 80°31'12" W. A DISTANCE OF 166.71 FEET;
THENCE S. 80°31'12" W. A DISTANCE OF 177.30 FEET;
THENCE S. 80°31'14" W. A DISTANCE OF 178.32 FEET;
THENCE S. 80°31'12" W. A DISTANCE OF 198.67 FEET;
THENCE S. 80°31'12" W. A DISTANCE OF 255.32 FEET;
THENCE S. 78°45'01" W. A DISTANCE OF 20.38 FEET;
THENCE S. 78°45'40" W. A DISTANCE OF 317.13 FEET;
THENCE N. 14°20'19" W. A DISTANCE OF 20.99 FEET;
THENCE S. 80°01'28" W. A DISTANCE OF 609.29 FEET;
THENCE S. 12°14'36" E. A DISTANCE OF 22.89 FEET;
THENCE S. 79°43'21" W. A DISTANCE OF 82.71 FEET;
THENCE S. 55°44'17" W. A DISTANCE OF 366.23 FEET;
THENCE S. 01°32'24" E. A DISTANCE OF 260.01 FEET;
THENCE S. 01°32'24" E. A DISTANCE OF 58.51 FEET;
THENCE S. 88°47'48" W. A DISTANCE OF 23.28 FEET;
THENCE S. 01°09'21" E. A DISTANCE OF 65.08 FEET;
THENCE N. 88°38'03" E. A DISTANCE OF 11.90 FEET;
THENCE S. 01°27'16" E. A DISTANCE OF 1,254.09 FEET;
THENCE S. 88°48'49" W. A DISTANCE OF 377.65 FEET;
THENCE S. 88°48'51" W. A DISTANCE OF 87.65 FEET;
THENCE S. 01°20'08" E. A DISTANCE OF 661.79 FEET;
THENCE N. 88°51'47" E. A DISTANCE OF 468.89 FEET;
THENCE S. 01°30'29" E. A DISTANCE OF 324.86 FEET;
THENCE S. 01°30'35" E. A DISTANCE OF 334.35 FEET;
THENCE S. 88°48'31" W. A DISTANCE OF 64.78 FEET;
THENCE S. 01°15'42" E. A DISTANCE OF 316.38 FEET;
THENCE N. 88°46'33" E. A DISTANCE OF 75.77 FEET;
THENCE S. 01°24'46" E. A DISTANCE OF 50.38 FEET;
THENCE S. 01°17'55" E. A DISTANCE OF 10.11 FEET;
THENCE S. 01°17'55" E. A DISTANCE OF 598.77 FEET;
THENCE S. 01°17'53" E. A DISTANCE OF 344.12 FEET;
THENCE N. 88°45'58" E. A DISTANCE OF 657.14 FEET;
THENCE S. 02°40'43" E. A DISTANCE OF 29.39 FEET;
THENCE S. 02°40'43" E. A DISTANCE OF 53.55 FEET;
THENCE S. 02°29'47" E. A DISTANCE OF 64.69 FEET;
THENCE S. 01°29'01" E. A DISTANCE OF 16.87 FEET;
THENCE S. 00°34'58" E. A DISTANCE OF 65.53 FEET;
THENCE S. 02°02'15" E. A DISTANCE OF 208.52 FEET;
THENCE S. 00°54'43" W. A DISTANCE OF 38.25 FEET;
THENCE S. 02°47'29" W. A DISTANCE OF 11.85 FEET;

THENCE S. 01°22'49" E. A DISTANCE OF 51.87 FEET;
THENCE S. 01°22'49" E. A DISTANCE OF 48.30 FEET;
THENCE S. 02°47'44" E. A DISTANCE OF 46.08 FEET;
THENCE S. 11°10'05" W. A DISTANCE OF 5.24 FEET;
THENCE S. 01°22'49" E. A DISTANCE OF 50.98 FEET;
THENCE S. 01°22'49" E. A DISTANCE OF 50.70 FEET;
THENCE S. 01°22'49" E. A DISTANCE OF 49.80 FEET;
THENCE S. 03°23'56" E. A DISTANCE OF 41.61 FEET;
THENCE S. 01°12'37" E. A DISTANCE OF 10.42 FEET;
THENCE S. 01°12'37" E. A DISTANCE OF 49.90 FEET;
THENCE S. 01°12'25" E. A DISTANCE OF 18.68 FEET;
THENCE S. 01°12'21" E. A DISTANCE OF 32.72 FEET;
THENCE S. 00°03'21" E. A DISTANCE OF 48.92 FEET;
THENCE S. 01°22'49" E. A DISTANCE OF 51.38 FEET;
THENCE S. 02°08'02" E. A DISTANCE OF 50.14 FEET;
THENCE S. 02°08'02" E. A DISTANCE OF 60.24 FEET;
THENCE S. 00°18'37" W. A DISTANCE OF 37.78 FEET;
THENCE S. 01°11'30" E. A DISTANCE OF 77.45 FEET;
THENCE S. 01°20'45" E. A DISTANCE OF 51.12 FEET;
THENCE S. 01°20'45" E. A DISTANCE OF 48.34 FEET;
THENCE N. 89°15'14" E. A DISTANCE OF 54.72 FEET;
THENCE N. 89°13'00" E. A DISTANCE OF 63.49 FEET;
THENCE N. 88°59'46" E. A DISTANCE OF 61.48 FEET;
THENCE S. 88°33'58" E. A DISTANCE OF 56.61 FEET;
THENCE S. 88°32'17" E. A DISTANCE OF 61.32 FEET;
THENCE N. 88°34'56" E. A DISTANCE OF 56.98 FEET;
THENCE N. 88°31'57" E. A DISTANCE OF 59.63 FEET;
THENCE S. 01°56'22" E. A DISTANCE OF 115.84 FEET;
THENCE S. 01°56'22" E. A DISTANCE OF 118.43 FEET;
THENCE S. 01°52'23" E. A DISTANCE OF 52.83 FEET;
THENCE S. 01°52'23" E. A DISTANCE OF 117.67 FEET;
THENCE S. 02°40'57" E. A DISTANCE OF 122.51 FEET;
THENCE S. 03°06'17" E. A DISTANCE OF 59.81 FEET;
THENCE S. 01°40'49" E. A DISTANCE OF 235.69 FEET;
THENCE S. 01°40'49" E. A DISTANCE OF 127.39 FEET;
THENCE S. 00°15'09" E. A DISTANCE OF 41.67 FEET;
THENCE S. 00°15'19" E. A DISTANCE OF 234.24 FEET;
THENCE S. 00°37'02" E. A DISTANCE OF 52.33 FEET;
THENCE N. 89°20'24" E. A DISTANCE OF 18.93 FEET;
THENCE S. 01°15'45" E. A DISTANCE OF 323.65 FEET;
THENCE S. 89°12'44" W. A DISTANCE OF 81.85 FEET;
THENCE S. 89°12'35" W. A DISTANCE OF 32.41 FEET;
THENCE S. 00°58'31" E. A DISTANCE OF 58.42 FEET;
THENCE S. 00°58'31" E. A DISTANCE OF 55.40 FEET;

THENCE S. 00°58'31" E. A DISTANCE OF 55.39 FEET;
THENCE S. 00°58'31" E. A DISTANCE OF 57.41 FEET;
THENCE S. 88°56'45" W. A DISTANCE OF 141.12 FEET;
THENCE S. 01°03'22" E. A DISTANCE OF 106.05 FEET;
THENCE S. 01°03'18" E. A DISTANCE OF 64.64 FEET;
THENCE S. 01°03'18" E. A DISTANCE OF 268.78 FEET;
THENCE N. 89°14'25" E. A DISTANCE OF 144.50 FEET;
THENCE S. 01°26'20" E. A DISTANCE OF 50.30 FEET;
THENCE S. 01°26'20" E. A DISTANCE OF 48.93 FEET;
THENCE S. 01°26'20" E. A DISTANCE OF 49.33 FEET;
THENCE S. 01°26'18" E. A DISTANCE OF 50.14 FEET;
THENCE S. 01°26'18" E. A DISTANCE OF 53.92 FEET;
THENCE S. 01°26'18" E. A DISTANCE OF 53.52 FEET;
THENCE S. 01°26'39" E. A DISTANCE OF 15.98 FEET;
THENCE N. 88°50'37" E. A DISTANCE OF 67.21 FEET;
THENCE S. 01°01'50" E. A DISTANCE OF 30.06 FEET;
THENCE S. 01°21'12" E. A DISTANCE OF 119.16 FEET;
THENCE S. 01°21'12" E. A DISTANCE OF 58.30 FEET;
THENCE S. 01°21'11" E. A DISTANCE OF 61.01 FEET;
THENCE S. 01°21'11" E. A DISTANCE OF 60.00 FEET;
THENCE S. 01°21'13" E. A DISTANCE OF 59.43 FEET;
THENCE S. 01°21'12" E. A DISTANCE OF 59.53 FEET;
THENCE S. 01°21'11" E. A DISTANCE OF 59.12 FEET;
THENCE S. 01°21'13" E. A DISTANCE OF 61.48 FEET;
THENCE S. 01°21'13" E. A DISTANCE OF 60.13 FEET;
THENCE S. 01°21'12" E. A DISTANCE OF 58.71 FEET;
THENCE S. 01°37'50" E. A DISTANCE OF 16.39 FEET;
THENCE S. 01°18'58" E. A DISTANCE OF 96.00 FEET;
THENCE S. 00°09'59" W. A DISTANCE OF 61.03 FEET;
THENCE S. 88°31'34 " W. A DISTANCE OF 136.70 FEET;
THENCE S. 00°07'01" W. A DISTANCE OF 101.08 FEET;
THENCE S. 01°50'53" E. A DISTANCE OF 99.18 FEET;
THENCE S. 00°51'22" E. A DISTANCE OF 200.34 FEET;
THENCE N. 83°36'15" E. A DISTANCE OF 70.53 FEET;
THENCE N. 83°33'38" E. A DISTANCE OF 300.32 FEET;
THENCE N. 83°33'38" E. A DISTANCE OF 33.39 FEET;
THENCE N. 83°35'11" E. A DISTANCE OF 46.66 FEET;
THENCE S. 01°30'38" E. A DISTANCE OF 244.10 FEET;
THENCE N. 88°39'39" E. A DISTANCE OF 228.21 FEET;
THENCE N. 88°40'27" E. A DISTANCE OF 85.19 FEET;
THENCE N. 88°39'22" E. A DISTANCE OF 56.15 FEET;
THENCE N. 88°39'09" E. A DISTANCE OF 59.35 FEET;
THENCE N. 88°38'57" E. A DISTANCE OF 55.78 FEET;
THENCE N. 88°38'45" E. A DISTANCE OF 58.13 FEET;

THENCE N. 88°38'33" E. A DISTANCE OF 57.67 FEET;
THENCE N. 88°38'21" E. A DISTANCE OF 57.21 FEET;
THENCE N. 88°38'11" E. A DISTANCE OF 56.87 FEET;
THENCE N. 88°38'01" E. A DISTANCE OF 54.78 FEET;
THENCE N. 88°37'53" E. A DISTANCE OF 55.12 FEET;
THENCE N. 88°37'45" E. A DISTANCE OF 57.98 FEET;
THENCE N. 88°37'38" E. A DISTANCE OF 56.28 FEET;
THENCE N. 88°37'31" E. A DISTANCE OF 59.24 FEET;
THENCE N. 88°37'31" E. A DISTANCE OF 60.15 FEET;
THENCE N. 88°37'15" E. A DISTANCE OF 59.67 FEET;
THENCE N. 88°37'17" E. A DISTANCE OF 60.85 FEET;
THENCE N. 87°43'40" E. A DISTANCE OF 63.05 FEET;
THENCE N. 88°58'53" E. A DISTANCE OF 23.47 FEET;
THENCE S. 01°37'05" E. A DISTANCE OF 37.71 FEET;
THENCE S. 01°37'02" E. A DISTANCE OF 244.43 FEET;
THENCE S. 01°36'23" E. A DISTANCE OF 238.01 FEET;
THENCE S. 01°34'49" E. A DISTANCE OF 617.92 FEET;
THENCE S. 01°35'39" E. A DISTANCE OF 41.32 FEET;

Back to the "Point of Beginning"

Said area containing 301,498,360± sq. ft. or 6,921.4499± ac.
more or less.

EXHIBIT B:
INCREMENT DISTRICT LEGAL DESCRIPTIONS

DISTRICT – A

A TRACT OF LAND BEING A PART OF SECTIONS 13, 14, 23 and 24, TOWNSHIP 20 N., RANGE 13 E. TULSA COUNTY, OKLAHOMA, MORE PARTICULARLY DESCRIBED TO WIT:

COMMENCING AT THE SOUTHWEST CORNER OF THE SOUTHWEST QUARTER OF SECTION 14:

THENCE NORTH A DISTANCE OF 619.80 FEET;

THENCE EAST A DISTANCE OF 2,296.85 FEET TO THE "POINT OF BEGINNING";

THENCE S. 00°47'48" E. A DISTANCE OF 623.92 FEET;

THENCE S. 00°47'48" E. A DISTANCE OF 755.50 FEET;

THENCE N. 85°09'00" W. A DISTANCE OF 79.57 FEET;

THENCE S. 01°35'06" W. A DISTANCE OF 574.42 FEET;

THENCE S. 02°12'47" W. A DISTANCE OF 742.52 FEET;

THENCE S. 51°47'29" E. A DISTANCE OF 599.52 FEET;

THENCE S. 53°19'18" E. A DISTANCE OF 381.00 FEET;

THENCE S. 57°44'01" E. A DISTANCE OF 729.47 FEET;

THENCE N. 87°57'49" E. A DISTANCE OF 1,784.37 FEET;

THENCE N. 60°56'43" E. A DISTANCE OF 81.59 FEET;

THENCE N. 20°59'34" E. A DISTANCE OF 730.05 FEET;

THENCE N. 13°11'26" E. A DISTANCE OF 1,041.95 FEET

THENCE N. 77°35'16" E. A DISTANCE OF 28.50 FEET;

THENCE N. 02°28'51" E. A DISTANCE OF 355.90 FEET;

THENCE N. 10°51'06" W. A DISTANCE OF 65.63 FEET;

THENCE N. 01°29'43" W. A DISTANCE OF 902.00 FEET;

THENCE N. 01°07'57" W. A DISTANCE OF 2,635.63 FEET;

THENCE N. 01°24'15" W. A DISTANCE OF 960.62 FEET;

THENCE N. 00°08'14" E. A DISTANCE OF 475.71 FEET;

THENCE S. 44°04'29" W. A DISTANCE OF 947.82 FEET;

THENCE S. 44°56'27" W. A DISTANCE OF 1,108.43 FEET;

THENCE S. 88°50'24" W. A DISTANCE OF 28.91 FEET;
THENCE S. 44°26'39" W. A DISTANCE OF 685.89 FEET;
THENCE S. 44°30'57" W. A DISTANCE OF 569.99 FEET;
THENCE S. 43°56'08" W. A DISTANCE OF 373.68 FEET;
THENCE S. 49°04'30" W. A DISTANCE OF 225.25 FEET;
THENCE S. 56°26'50" W. A DISTANCE OF 237.85 FEET;
THENCE S. 63°02'49" W. A DISTANCE OF 175.05 FEET;
THENCE S. 67°37'10" W. A DISTANCE OF 130.35 FEET;
THENCE S. 01°43'24" E. A DISTANCE OF 416.08 FEET;
THENCE S. 76°33'45" W. A DISTANCE OF 135.61 FEET;
THENCE S. 80°10'54.394" W. A DISTANCE OF 205.06334 FEET;
BACK TO THE "POINT OF BEGINNING"

SAID AREA CONTAINING 18,753,811± SQ. FT. OR 430.5283± AC. MORE OR LESS.

PLUS THE FOLLOWING EXPANSION AREA:

A TRACT OF LAND BEING PART OF THE SOUTHWEST QUARTER (SW/4) OF SECTION 14, PART OF THE SOUTHEAST QUARTER (SE/4) OF SECTION 15, PART OF THE EAST HALF (E/2) OF SECTION 22, PART OF SECTION 23, PART OF THE WEST HALF (W/2) OF SECTION 24, PART OF THE NORTHWEST QUARTER (NW/4) OF SECTION 25, PART OF THE NORTHWEST QUARTER (NW/4) OF SECTION 26, AND PART OF THE NORTHEAST QUARTER (NE/4) OF SECTION 27, ALL IN T-20-N, R-13-E, OF THE INDIAN BASE AND MERIDIAN, TULSA COUNTY, STATE OF OKLAHOMA, ACCORDING TO THE UNITED STATES GOVERNMENT SURVEY THEREOF, SAID TRACT OF LAND BEING MORE PARTICULARLY DESCRIBED AS FOLLOWS, TO-WIT:

COMMENCING AT THE NORTHWEST CORNER OF SAID SECTION 26; THENCE S 00°03'40" E ALONG THE WESTERLY LINE OF SECTION 26 FOR 43.61' TO THE "POINT OF BEGINNING" OF SAID TRACT OF LAND; THENCE S 84°09'08" E FOR 59.59'; THENCE S 89°47'43" E FOR 683.75'; THENCE N 01°45'13" E FOR 16.85'; THENCE N 89°05'35" E FOR 117.41'; THENCE S 31°05'48" E FOR 133.18'; THENCE S 22°07'36" E FOR 91.11'; THENCE S 00°11'55" E FOR 598.05'; THENCE S 04°50'24" E FOR 86.66'; THENCE S 13°04'21" E FOR 73.06'; THENCE S 25°11'47" E FOR 74.69'; THENCE S 34°15'58" E FOR 54.65'; THENCE S 45°26'48" E FOR 143.09'; THENCE S 65°31'06" E FOR 88.19'; THENCE S 85°19'46" E FOR 227.00'; THENCE N 61°59'46" E FOR 233.05'; THENCE N 20°25'27" E FOR 198.06'; THENCE N 04°38'24" E FOR 961.47'; THENCE N 03°39'20" E FOR 763.83'; THENCE N 89°49'53" E FOR 1195.86'; THENCE N 89°58'04" E FOR 973.28'; THENCE N 89°28'15" E FOR 546.86'; THENCE S 51°41'07" E FOR 612.76'; THENCE S 51°38'42" E FOR 981.98'; THENCE N 01°34'55" E FOR 4181.46'; THENCE S 78°37'10" W FOR 28.50'; THENCE S 14°13'20" W FOR 1041.95'; THENCE S 22°01'28" W FOR 730.05'; THENCE S 61°58'37" W FOR 81.59'; THENCE S 88°59'43" W FOR 1784.37'; THENCE N 56°42'07" W FOR 729.47'; THENCE N 52°17'24" W FOR 381.00'; THENCE

N 50°45'35" W FOR 599.52'; THENCE N 03°14'41" E FOR 742.52'; THENCE N 02°37'00" E FOR 574.42'; THENCE S 84°07'06" E FOR 79.57'; THENCE N 00°14'06" E FOR 755.50'; THENCE N 00°14'06" E FOR 623.92'; THENCE N 81°12'01" E FOR 203.81'; THENCE N 77°35'39" E FOR 135.61'; THENCE N 00°41'30" W FOR 425.40'; THENCE S 68°59'04" W FOR 12.75'; THENCE S 71°34'49" W FOR 19.52'; THENCE S 71°34'49" W FOR 29.49'; THENCE S 72°56'55" W FOR 23.39'; THENCE S 72°56'55" W FOR 53.23'; THENCE S 79°02'33" W FOR 26.05'; THENCE S 76°57'00" W FOR 26.39'; THENCE S 77°57'06" W FOR 23.86'; THENCE S 78°51'40" W FOR 28.93'; THENCE S 79°58'02" W FOR 26.82'; THENCE S 80°56'55" W FOR 25.97'; THENCE S 81°57'00" W FOR 26.39'; THENCE S 81°46'06" W FOR 97.14'; THENCE S 81°45'56" W FOR 120.26'; THENCE S 81°45'54" W FOR 124.48'; THENCE S 81°45'56" W FOR 102.05'; THENCE S 81°42'56" W FOR 212.59'; THENCE S 81°50'30" W FOR 137.79'; THENCE S 81°50'30" W FOR 176.73'; THENCE S 81°50'30" W FOR 214.09'; THENCE S 81°36'41" W FOR 194.39'; THENCE S 81°45'54" W FOR 166.71'; THENCE S 81°45'54" W FOR 177.30'; THENCE S 81°45'56" W FOR 178.32'; THENCE S 81°45'54" W FOR 198.67'; THENCE S 81°45'54" W FOR 255.32'; THENCE S 80°00'20" W FOR 337.51'; THENCE N 13°05'37" W FOR 20.99'; THENCE S 81°16'10" W FOR 609.29'; THENCE S 10°59'54" E FOR 22.89'; THENCE S 80°58'03" W FOR 82.71'; THENCE S 56°58'59" W FOR 366.23'; THENCE S 00°17'42" E FOR 260.01'; THENCE S 00°17'42" E FOR 58.51'; THENCE N 89°57'30" W FOR 23.28'; THENCE S 00°05'21" W FOR 65.08'; THENCE N 89°52'45" E FOR 11.90'; THENCE S 00°12'34" E FOR 1254.09'; THENCE N 89°56'29" W FOR 465.30'; THENCE S 00°05'26" E FOR 661.79'; THENCE S 89°53'31" E FOR 468.89'; THENCE S 00°15'50" E FOR 659.21'; THENCE N 89°56'47" W FOR 64.78'; THENCE S 00°01'00" E FOR 316.38'; THENCE S 89°58'45" E FOR 75.77'; THENCE S 00°03'33" E FOR 1003.38'; THENCE S 89°59'20" E FOR 657.14'; THENCE S 00°13'50" E FOR 1370.00'; THENCE S 89°41'51" E FOR 473.66'; THENCE N 01°39'40" E FOR 9.66'; THENCE N 89°52'16" E FOR 128.76'; THENCE S 84°09'08" E FOR 51.46' TO THE "POINT OF BEGINNING" OF SAID TRACT OF LAND.

THE ABOVE-DESCRIBED TRACT OF LAND CONTAINS 28,753,794 SQUARE FEET OR 660.0963 ACRES, MORE OR LESS.

THE BEARINGS USED IN THE ABOVE LEGAL DESCRIPTION ARE BASED ON THE WESTERLY LINE OF SECTION 13, T-20-N, R-13-E HAVING AN ASSUMED, NON-ASTRONOMICAL BEARING OF N 00°00'24" W.

THE ABOVE LEGAL DESCRIPTION WAS PREPARED BY ERIC G. SACK, OKLAHOMA LICENSED PROFESSIONAL LAND SURVEYOR NO. 1545, ON NOVEMBER 5, 2024. (CA NO. 1783)

DISTRICT – B

A TRACT OF LAND BEING A PART OF SECTIONS 13 and 24, TOWNSHIP 20 N, RANGE 13 E AND SECTIONS 18 and 19, TOWNSHIP 20 N, RANGE 14 E, TULSA COUNTY, OKLAHOMA, MORE PARTICULARLY DESCRIBED TO WIT:

COMMENCING AT THE NORTHEAST CORNER OF SECTION 13:

THENCE WEST A DISTANCE OF 38.28 FEET;

THENCE SOUTH A DISTANCE OF 54.27 FEET TO THE "POINT OF BEGINNING";

THENCE S. 89°18'25" W. A DISTANCE OF 433.55 FEET;

THENCE S. 83°51'22" W. A DISTANCE OF 94.47 FEET;

THENCE S. 88°38'48" W. A DISTANCE OF 96.69 FEET;

THENCE S. 88°38'41" W. A DISTANCE OF 166.85 FEET;

THENCE S. 88°38'52" W. A DISTANCE OF 162.66 FEET;

THENCE S. 88°38'42" W. A DISTANCE OF 161.04 FEET;

THENCE S. 88°38'42" W. A DISTANCE OF 170.45 FEET;

THENCE S. 73°44'45" W. A DISTANCE OF 168.08 FEET;

THENCE N. 89°50'24" W. A DISTANCE OF 107.96 FEET;

THENCE N. 89°50'24" W. A DISTANCE OF 30.85 FEET;

THENCE ON A CURVE HAVING A CENTRAL ANGLE OF 22°37'58" A RADIUS OF 3,459.40 FEET AND AN ARC DISTANCE OF 1,366.52 FEET, SAID CURVE HAVING A CHORD BEARING OF S 76°0'44" W AND A CHORD DISTANCE OF 1,357.65 FEET;

THENCE S. 22°56'56" E. A DISTANCE OF 226.05 FEET;

THENCE S. 08°04'16" E. A DISTANCE OF 393.85 FEET

THENCE S. 89°56'25" E. A DISTANCE OF 64.20 FEET;

THENCE S. 03°32'56" E. A DISTANCE OF 235.81 FEET;

THENCE S. 00°07'49" W. A DISTANCE OF 1,093.13 FEET;

THENCE N. 89°52'05" E. A DISTANCE OF 13.21 FEET;

THENCE S. 00°00'47" E. A DISTANCE OF 320.00 FEET;

THENCE S. 01°26'28" W. A DISTANCE OF 2,473.15 FEET;

THENCE S. 00°27'17" E. A DISTANCE OF 772.73 FEET;

THENCE S. 20°51'39" E. A DISTANCE OF 754.76 FEET;

THENCE S. 15°50'30" E. A DISTANCE OF 1,410.42 FEET;

THENCE S. 14°22'38" E. A DISTANCE OF 135.59 FEET;

THENCE N. 88°31'10" E. A DISTANCE OF 779.05 FEET;

THENCE S. 01°01'09" E. A DISTANCE OF 506.19 FEET;

THENCE N. 88°30'28" E. A DISTANCE OF 3,283.10 FEET;

THENCE N. 00°37'08" E. A DISTANCE OF 3,475.95 FEET;
THENCE N. 01°13'46" E. A DISTANCE OF 2,859.46 FEET;
THENCE N. 00°58'03" E. A DISTANCE OF 2,204.18 FEET;
THENCE S. 89°22'09" W. A DISTANCE OF 338.99 FEET;
THENCE S. 88°25'33" W. A DISTANCE OF 356.35 FEET;
THENCE S. 88°26'11" W. A DISTANCE OF 161.19 FEET;
THENCE S. 88°27'46" W. A DISTANCE OF 98.519 FEET;
THENCE S. 83°13'22" W. A DISTANCE OF 106.78 FEET;
THENCE S. 89°08'42" W. A DISTANCE OF 114.32 FEET;
THENCE S. 88°17'54" W. A DISTANCE OF 344.82 FEET;
THENCE N. 01°32'34" W. A DISTANCE OF 9.08 FEET;
THENCE S. 88°41'16" W. A DISTANCE OF 406.82 FEET;
THENCE S. 88°40'56" W. A DISTANCE OF 146.77 FEET;
THENCE S. 83°03'22" W. A DISTANCE OF 10.26 FEET;
THENCE N. 86°24'20" W. A DISTANCE OF 84.26 FEET;
BACK TO THE "POINT OF BEGINNING"
SAID AREA CONTAINING 39,383,287± SQ. FT. OR 904.1159± AC. MORE OR LESS.

DISTRICT – C

LEGAL DESCRIPTION

AIR FORCE PLANT NO. 3

A TRACT OF LAND IN SECTION 24 AND 25, OF TOWNSHIP 20 NORTH, RANGE 13 EAST OF THE INDIAN BASE AND MERIDIAN, TULSA COUNTY, STATE OF OKLAHOMA, BEING MORE PARTICULARLY DESCRIBED AS FOLLOWS, TO WIT:

BEGINNING AT THE SOUTHEAST CORNER OF SAID SECTION 24

THENCE N 89° 55' 17" W A DISTANCE OF 60.10 FEET TO THE "POINT OF BEGINNING";

THENCE N 00° 00' 42" E A DISTANCE OF 795.72 FEET TO A POINT

THENCE N 89° 55' 17" W A DISTANCE OF 344.05 FEET TO A POINT;

THENCE N 52° 50' 16" W A DISTANCE OF 155.96 FEET TO A POINT;

THENCE N 89° 54' 59" W A DISTANCE OF 47.63 FEET TO A POINT;
THENCE S 50° 43' 47" W A DISTANCE OF 53.84 FEET TO A POINT;
THENCE N 89° 55' 17" W A DISTANCE OF 2,689.25 FEET TO A POINT;
THENCE S 00° 05' 57" E A DISTANCE OF 271.34 FEET TO A POINT;
THENCE S 34° 12' 15" W A DISTANCE OF 356.07 FEET TO A POINT;
THENCE S 02° 17' 54" W A DISTANCE OF 1,607.50 FEET TO A POINT;
THENCE N 89° 52' 01" W A DISTANCE OF 65.74 FEET TO A POINT;
THENCE S 00° 02' 45" W A DISTANCE OF 1,681.02 FEET TO A POINT;
THENCE N 84° 36' 22" E A DISTANCE OF 3,217.63 FEET TO A POINT;
THENCE N 05° 23' 38" W A DISTANCE OF 50.00 FEET TO A POINT;
THENCE N 84° 36' 22" E A DISTANCE OF 380.06 FEET TO A POINT;
THENCE N 00° 00' 42" E A DISTANCE OF 2,604.81 FEET TO THE "POINT OF BEGINNING";
CONTAINING 12,818,757 SQUARE FEET OR 294.2781 ACRES MORE OR LESS.

DISTRICT – D

A TRACT OF LAND BEING A PART OF SECTIONS 23, 24, 25 AND 26, TOWNSHIP 20 N, RANGE 13 E, TULSA COUNTY, OKLAHOMA, MORE PARTICULARLY DESCRIBED TO WIT:

COMMENCING AT THE SOUTHWEST CORNER OF SECTION 26:

THENCE EAST A DISTANCE OF 1,317.095 FEET;

TO THE "POINT OF BEGINNING"

THENCE N. 88°50'32" E. A DISTANCE OF 3,478.59 FEET;

THENCE S. 02°03'10" E. A DISTANCE OF 52.17 FEET;

THENCE S. 00°41'59" E. A DISTANCE OF 79.47 FEET;

THENCE S. 01°15'40" E. A DISTANCE OF 64.62 FEET;

THENCE S. 01°15'53" E. A DISTANCE OF 64.34 FEET;

THENCE S. 01°16'10" E. A DISTANCE OF 68.04 FEET;

THENCE S.01°16'29" E. A DISTANCE OF 78.83 FEET;

THENCE S. 01°16'47" E. A DISTANCE OF 95.80 FEET;

THENCE S. 01°32'12" E. A DISTANCE OF 86.92 FEET;

THENCE N. 88°49'52" E. A DISTANCE OF 70.09 FEET;
THENCE N. 88°49'44" E. A DISTANCE OF 91.82 FEET
THENCE N. 88°49'30" E. A DISTANCE OF 56.73 FEET;
THENCE N. 88°49'07" E. A DISTANCE OF 63.12 FEET;
THENCE N. 88°48'36" E. A DISTANCE OF 61.84 FEET;
THENCE N. 88°47'34" E. A DISTANCE OF 20.28 FEET;
THENCE N. 88°48'22" E. A DISTANCE OF 50.94 FEET;
THENCE N. 88°46'53" E. A DISTANCE OF 59.32 FEET;
THENCE S. 89°38'43" E. A DISTANCE OF 1,916.61 FEET;
THENCE N. 88°51'34" E. A DISTANCE OF 695.73 FEET;
THENCE N. 00°09'57" W. A DISTANCE OF 597.79 FEET;
THENCE N. 21°31'10" E. A DISTANCE OF 45.80 FEET;
THENCE N. 01°14'27" W. A DISTANCE OF 39.25 FEET;
THENCE N. 88°50'02" E. A DISTANCE OF 529.44 FEET;
THENCE N. 88°52'54" E. A DISTANCE OF 731.58 FEET;
THENCE N. 88°50'33" E. A DISTANCE OF 719.65 FEET;
THENCE N. 02°09'16" W. A DISTANCE OF 9.87 FEET;
THENCE N. 88°58'51" E. A DISTANCE OF 610.09 FEET;
THENCE N. 01°11'31" W. A DISTANCE OF 1,268.14 FEET;
THENCE S. 88°52'19" W. A DISTANCE OF 10.48 FEET;
THENCE N. 01°13'20" W. A DISTANCE OF 377.78 FEET;
THENCE N. 01°16'28.15" W. A DISTANCE OF 761.2294 FEET;
THENCE S. 82°22'17.26 W. A DISTANCE OF 1,267.8712 FEET;
THENCE S. 82°22'18.62" W. A DISTANCE OF 1,327.2960 FEET;
THENCE S. 01°11'13.05" E. A DISTANCE OF 1,323.2039 FEET;
THENCE S. 01°11'21" E. A DISTANCE OF 178.28 FEET;
THENCE S. 89°01'11" W. A DISTANCE OF 656.66 FEET;
THENCE S. 01°03'13" E. A DISTANCE OF 229.11 FEET;
THENCE N. 89°50'26" W. A DISTANCE OF 1,186.46 FEET;

THENCE S. 00°05'45" E. A DISTANCE OF 460.20 FEET;
THENCE S. 88°51'44" W. A DISTANCE OF 471.03 FEET;
THENCE S. 88°51'44" W. A DISTANCE OF 318.21 FEET;
THENCE N. 01°10'17" W. A DISTANCE OF 331.31 FEET;
THENCE N. 01°10'16" W. A DISTANCE OF 316.22 FEET;
THENCE N. 01°09'35" W. A DISTANCE OF 506.55 FEET;
THENCE N. 01°10'10" W. A DISTANCE OF 165.21 FEET;
THENCE N. 01°09'49" W. A DISTANCE OF 591.79 FEET;
THENCE N. 01°10'14" W. A DISTANCE OF 197.74 FEET;
THENCE N. 01°10'07" W. A DISTANCE OF 532.46 FEET;
THENCE N. 01°10'18" W. A DISTANCE OF 1,769.02 FEET;
THENCE N. 40°00'44" E. A DISTANCE OF 448.75 FEET;
THENCE N. 37°02'39" E. A DISTANCE OF 407.09 FEET;
THENCE N. 52°53'24" W. A DISTANCE OF 981.98 FEET;
THENCE N. 52°55'49" W. A DISTANCE OF 612.76 FEET;
THENCE S. 88°13'33" W. A DISTANCE OF 546.86 FEET;
THENCE S. 88°43'22" W. A DISTANCE OF 973.28 FEET;
THENCE S. 88°35'11" W. A DISTANCE OF 1,195.86 FEET;
THENCE S. 02°24'38" W. A DISTANCE OF 763.83 FEET;
THENCE S. 03°23'42" W. A DISTANCE OF 961.47 FEET;
THENCE S. 19°10'45" W. A DISTANCE OF 198.06 FEET;
THENCE S. 60°45'04" W. A DISTANCE OF 233.05 FEET;
THENCE N. 86°34'28" W. A DISTANCE OF 227.00 FEET;
THENCE N. 66°45'48" W. A DISTANCE OF 88.19 FEET;
THENCE N. 46°41'30" W. A DISTANCE OF 143.09 FEET;
THENCE N. 35°30'40" W. A DISTANCE OF 54.65 FEET;
THENCE N. 26°26'29" W. A DISTANCE OF 74.69 FEET;
THENCE N. 14°19'03" W. A DISTANCE OF 73.06 FEET;
THENCE N. 06°05'06" W. A DISTANCE OF 86.66 FEET;

THENCE N. 01°26'37" W. A DISTANCE OF 598.05 FEET;
THENCE N. 23°22'18" W. A DISTANCE OF 91.11 FEET;
THENCE N. 32°20'30" W. A DISTANCE OF 133.18 FEET;
THENCE S. 87°50'53" W. A DISTANCE OF 117.41 FEET;
THENCE S. 00°30'31" W. A DISTANCE OF 16.85 FEET;
THENCE S. 88°57'35" W. A DISTANCE OF 683.75 FEET;
THENCE N. 85°23'50" W. A DISTANCE OF 111.05 FEET;
THENCE S. 88°37'34" W. A DISTANCE OF 128.759 FEET;
THENCE S. 00°24'58" W. A DISTANCE OF 9.66 FEET;
THENCE S. 87°56'07" W. A DISTANCE OF 64.64 FEET;
THENCE S. 01°56'22" E. A DISTANCE OF 115.84 FEET;
THENCE S. 01°54'13" E. A DISTANCE OF 118.43 FEET;
THENCE S. 01°57'14" E. A DISTANCE OF 52.83 FEET;
THENCE S. 02°17'29" E. A DISTANCE OF 117.70 FEET;
THENCE S. 02°16'51" E. A DISTANCE OF 122.47 FEET;
THENCE S. 03°16'13" E. A DISTANCE OF 59.81 FEET;
THENCE S. 01°40'49" E. A DISTANCE OF 363.09 FEET;
THENCE S. 00°15'19" E. A DISTANCE OF 275.88 FEET;
THENCE S. 00°37'03" E. A DISTANCE OF 46.21 FEET;
THENCE S. 00°37'03" E. A DISTANCE OF 6.125 FEET;
THENCE N. 89°20'23" E. A DISTANCE OF 18.93 FEET;
THENCE S. 01°15'45" E. A DISTANCE OF 323.65 FEET;
THENCE S. 89°12'44" W. A DISTANCE OF 114.27 FEET;
THENCE S. 00°58'32" E. A DISTANCE OF 113.819 FEET;
THENCE S. 00°58'31" E. A DISTANCE OF 112.80 FEET;
THENCE S. 88°56'45" W. A DISTANCE OF 141.12 FEET;
THENCE S. 01°03'22" E. A DISTANCE OF 439.48 FEET;
THENCE N. 89°14'25" E. A DISTANCE OF 144.49 FEET;
THENCE S. 01°26'20" E. A DISTANCE OF 322.13 FEET;

THENCE N. 88°50'36" E. A DISTANCE OF 67.21 FEET;
THENCE S. 01°17'16" E. A DISTANCE OF 149.22 FEET;
THENCE S. 01°21'13" E. A DISTANCE OF 58.30 FEET;
THENCE S. 01°00'19" E. A DISTANCE OF 61.01 FEET;
THENCE S. 01°42'24" E. A DISTANCE OF 59.99 FEET;
THENCE S. 01°21'13" E. A DISTANCE OF 59.43 FEET;
THENCE S. 01°21'12" E. A DISTANCE OF 49.21 FEET;
THENCE S. 01°21'12" E. A DISTANCE OF 69.44 FEET;
THENCE S. 01°21'13" E. A DISTANCE OF 61.48 FEET;
THENCE S. 00°49'16" E. A DISTANCE OF 60.13 FEET;
THENCE S. 01°53'56" E. A DISTANCE OF 58.71 FEET;
THENCE S. 01°37'48" E. A DISTANCE OF 16.39 FEET;
THENCE S. 01°18'58" E. A DISTANCE OF 95.99 FEET;
THENCE S. 00°09'59" W. A DISTANCE OF 61.03 FEET;
THENCE S. 88°31'34" W. A DISTANCE OF 136.69 FEET;
THENCE S. 01°50'52" E. A DISTANCE OF 101.04 FEET;
THENCE S. 01°50'53" E. A DISTANCE OF 99.179 FEET;
THENCE S. 00°51'22" E. A DISTANCE OF 200.34 FEET;
THENCE N. 83°36'14" E. A DISTANCE OF 70.53 FEET;
THENCE N. 83°35'37" E. A DISTANCE OF 61.95 FEET;
THENCE N. 83°36'15" E. A DISTANCE OF 238.34 FEET;
THENCE N. 83°39'09" E. A DISTANCE OF 33.39 FEET;
THENCE N. 83°13'43" E. A DISTANCE OF 46.689 FEET;
THENCE S. 01°30'38" E. A DISTANCE OF 244.12 FEET;
THENCE N. 88°39'39" E. A DISTANCE OF 228.21 FEET;
THENCE N. 88°39'36" E. A DISTANCE OF 85.19 FEET;
THENCE N. 88°39'23" E. A DISTANCE OF 56.15 FEET;
THENCE N. 88°39'09" E. A DISTANCE OF 59.35 FEET;
THENCE N. 88°38'58" E. A DISTANCE OF 55.779 FEET;

THENCE N. 88°38'44" E. A DISTANCE OF 58.13 FEET;
THENCE N. 88°29'17" E. A DISTANCE OF 48.93 FEET;
THENCE N. 89°30'25" E. A DISTANCE OF 8.74 FEET;
THENCE N. 88°38'21" E. A DISTANCE OF 57.21 FEET;
THENCE N. 88°38'11" E. A DISTANCE OF 56.869 FEET;
THENCE N. 88°38'01" E. A DISTANCE OF 54.78 FEET;
THENCE N. 88°37'53" E. A DISTANCE OF 55.19 FEET;
THENCE N. 88°37'44" E. A DISTANCE OF 57.97 FEET;
THENCE N. 88°37'38" E. A DISTANCE OF 56.28 FEET;
THENCE N. 88°37'31" E. A DISTANCE OF 59.24 FEET;
THENCE N. 88°37'26" E. A DISTANCE OF 60.15 FEET;
THENCE N. 88°37'21" E. A DISTANCE OF 59.67 FEET;
THENCE N. 88°37'17" E. A DISTANCE OF 60.85 FEET;
THENCE N. 87°43'40" E. A DISTANCE OF 63.05 FEET;
THENCE S. 88°58'54" E. A DISTANCE OF 23.47 FEET;
THENCE S. 01°37'01" E. A DISTANCE OF 37.73 FEET;
THENCE S. 01°36'53" E. A DISTANCE OF 244.42 FEET;
THENCE S. 01°36'31" E. A DISTANCE OF 238.01 FEET;
THENCE S. 01°35'01" E. A DISTANCE OF 617.92 FEET;
THENCE S. 01°26'43.7077" E. A DISTANCE OF 41.4964097 FEET;
BACK TO THE "POINT OF BEGINNING"
SAID AREA CONTAINING 37,953,814 ± SQ. FT. OR 871.2996 ± AC. MORE OR LESS.

PLUS THE FOLLOWING EXPANSION AREA:

A TRACT OF LAND BEING A PART OF SECTION 25, T-20-N, R-13-E, OF THE INDIAN BASE AND MERIDIAN, TULSA COUNTY, STATE OF OKLAHOMA, ACCORDING TO THE UNITED STATES GOVERNMENT SURVEY THEREOF, SAID TRACT OF LAND BEING MORE PARTICULARLY DESCRIBED AS FOLLOWS, TO-WIT:

“BEGINNING AT A POINT”, SAID POINT BEING THE SOUTHWEST CORNER OF SAID SECTION 25; THENCE N 00°03'36" W ALONG THE WESTERLY LINE OF SAID SECTION 25 FOR 2642.74' TO THE NORTHWEST CORNER OF THE SOUTHWEST QUARTER (SW/4) OF SECTION 25; THENCE CONTINUING N 00°03'36" W

ALONG SAID WESTERLY LINE FOR 1757.37'; THENCE N 39°52'03" E FOR 869.10; THENCE S 03°06'51" W FOR 2904.55'; THENCE N 84°40'30" E FOR 4473.95'; THENCE N 05°19'30" W FOR 50.00'; THENCE N 84°40'30" E FOR 445.13' TO A POINT ON THE EASTERLY LINE OF SAID SECTION 25; THENCE S 00°00'51" E ALONG SAID EASTERLY LINE FOR 41.46' TO THE SOUTHEAST CORNER OF THE NORTHEAST QUARTER (NE/4) OF SECTION 25; THENCE CONTINUING S 00°00'51" E ALONG SAID EASTERLY LINE FOR 947.37'; THENCE N 89°52'13" W FOR 1314.22'; THENCE S 00°02'04" W FOR 131.32'; THENCE S 89°35'18" W FOR 10.21'; THENCE S 00°05'05" W FOR 246.47'; THENCE N 89°53'33" W FOR 1319.87' TO A POINT ON THE EASTERLY LINE OF THE SOUTHWEST QUARTER (SW/4) OF SAID SECTION 25; THENCE S 00°02'14" E ALONG SAID EASTERLY LINE FOR 656.36'; THENCE N 89°44'07" W FOR 660.09'; THENCE S 00°11'29" W FOR 229.11'; THENCE N 88°35'44" W FOR 1186.46'; THENCE S 01°08'57" W FOR 459.97' TO A POINT ON THE SOUTHERLY LINE OF SAID SECTION 25; THENCE N 89°54'34" W ALONG SAID SOUTHERLY LINE FOR 787.70' TO THE "POINT OF BEGINNING" OF SAID TRACT OF LAND,

AND

A TRACT OF LAND BEING PART OF THE WEST HALF (W/2) OF SECTION 36, T-20-N, R-13-E, OF THE INDIAN BASE AND MERIDIAN, TULSA COUNTY, STATE OF OKLAHOMA, ACCORDING TO THE UNITED STATES GOVERNMENT SURVEY THEREOF, SAID TRACT OF LAND BEING MORE PARTICULARLY DESCRIBED AS FOLLOWS, TO-WIT:

COMMENCING AT THE NORTHWEST CORNER OF SAID SECTION 36; THENCE S 00°14'05" E ALONG THE WESTERLY LINE OF SECTION 36 FOR 589.96' TO THE "POINT OF BEGINNING" OF SAID TRACT OF LAND; THENCE CONTINUING S 00°14'05" E ALONG SAID WESTERLY LINE FOR 2053.55' TO THE SOUTHWEST CORNER OF THE NORTHWEST QUARTER (NW/4) OF SAID SECTION 36; THENCE S 00°14'29" W CONTINUING ALONG SAID WESTERLY LINE FOR 2641.78' TO THE SOUTHWEST CORNER OF SECTION 36; THENCE S 89°56'35" E ALONG THE SOUTHERLY LINE OF SECTION 36 FOR 2644.85' TO THE SOUTHEAST CORNER OF THE SOUTHWEST QUARTER (SW/4) OF SECTION 36; THENCE N 00°00'10" W ALONG THE EASTERLY LINE OF SAID WEST HALF (W/2) FOR 2641.42' TO THE NORTHEAST CORNER OF SAID SOUTHWEST QUARTER (SW/4); THENCE CONTINUING N 00°00'10" W ALONG SAID EASTERLY LINE FOR 2001.66'; THENCE N 89°53'44" W FOR 729.13'; THENCE N 88°23'52" W FOR 1913.53' TO THE "POINT OF BEGINNING" OF SAID TRACT OF LAND.

THE ABOVE-DESCRIBED TRACT OF LAND CONTAINS 21,175,427 SQUARE FEET OR 486.1209 ACRES, MORE OR LESS.

THE BEARINGS USED IN THE ABOVE LEGAL DESCRIPTION ARE BASED ON THE WESTERLY LINE OF SECTION 13, T-20-N, R-13-E HAVING AN ASSUMED, NON-ASTRONOMICAL BEARING OF N 00°00'24" W.

THE ABOVE LEGAL DESCRIPTION WAS PREPARED BY ERIC G. SACK, OKLAHOMA LICENSED PROFESSIONAL LAND SURVEYOR NO. 1545, ON NOVEMBER 5, 2024. (CA NO. 1783)

DISTRICT – E

A TRACT OF LAND BEING A PART OF SECTION 18, TOWNSHIP 20 N, RANGE 14 E, TULSA COUNTY, OKLAHOMA, MORE PARTICULARLY DESCRIBED TO WIT:

COMMENCING AT THE SOUTHWEST CORNER OF THE SOUTHEAST QUARTER OF SECTION 18:

THENCE EAST A DISTANCE OF 493.46 FEET;

THENCE NORTH A DISTANCE OF 16.67 FEET; TO THE "POINT OF BEGINNING"

THENCE N. 01°49'57" E. A DISTANCE OF 3,982.76 FEET;

THENCE S. 88°40'01" W. A DISTANCE OF 142.52 FEET;

THENCE N. 01°31'51" E. A DISTANCE OF 1,158.17 FEET;

THENCE S. 88°28'16" E. A DISTANCE OF 493.28 FEET;

THENCE N. 86°15'48" E. A DISTANCE OF 249.91 FEET;

THENCE N. 00°21'12" W. A DISTANCE OF 13.19 FEET;

THENCE N. 89°14'49" E. A DISTANCE OF 49.84 FEET;

THENCE S. 68°00'40" E. A DISTANCE OF 326.64 FEET;

THENCE S. 45°59'02" E. A DISTANCE OF 579.23 FEET;

THENCE S. 28°21'26" E. A DISTANCE OF 393.84 FEET;

THENCE S. 04°50'05" E. A DISTANCE OF 803.20 FEET;

THENCE S. 01°16'38" E. A DISTANCE OF 715.82 FEET;

THENCE S. 25°54'42" W. A DISTANCE OF 73.20 FEET;

THENCE S. 88°38'57" W. A DISTANCE OF 1,296.76 FEET;

THENCE S. 02°21'10" W. A DISTANCE OF 723.71 FEET;

THENCE S. 88°46'24" W. A DISTANCE OF 187.89 FEET;

THENCE S. 00°55'05" E. A DISTANCE OF 320.00 FEET;

THENCE N. 88°49'52" E. A DISTANCE OF 174.08 FEET;

THENCE S. 01°55'40" W. A DISTANCE OF 280.20 FEET;

THENCE N. 88°42'37" E. A DISTANCE OF 1,063.37 FEET;

THENCE S. 00°53'22" E. A DISTANCE OF 191.19 FEET;

THENCE S. 42°59'53" W. A DISTANCE OF 246.87 FEET;

THENCE ON A CURVE HAVING A CENTRAL ANGLE OF

43°06'58" A RADIUS OF 531.00 FEET AND AN ARC DISTANCE

OF 400.49 FEET, SAID CURVE HAVING A CHORD BEARING

OF S.18°16'32" W. AND A CHORD DISTANCE OF 390.22 FEET;

THENCE S. 00°44'27" E. A DISTANCE OF 229.38 FEET;
THENCE S. 01°50'14" W. A DISTANCE OF 391.05 FEET;
THENCE S. 89°42'25" W. A DISTANCE OF 1,187.78 FEET; BACK TO THE "POINT OF BEGINNING"
SAID AREA CONTAINING 5,993,748.± SQ. FT. OR 137.60.± AC. MORE OR LESS.

AND

A TRACT OF LAND BEING A PART OF SECTIONS 19 AND 30, TOWNSHIP 20 N, RANGE 14 E, TULSA COUNTY, OKLAHOMA, MORE PARTICULARLY DESCRIBED TO WIT:

COMMENCING AT THE SOUTHWEST CORNER OF THE NORTHWEST QUARTER OF SECTION 30:

THENCE N. 88°40'14" E. A DISTANCE OF 136.485 FEET;
THENCE N. 01°19'57" W A DISTANCE OF 17.526 FEET TO THE "POINT OF BEGINNING";
THENCE N. 83°05'55" E. A DISTANCE OF 1,168.11 FEET;
THENCE N. 84°42'30" E. A DISTANCE OF 1,692.7614 FEET;
THENCE N. 84°36'50" E. A DISTANCE OF 1,674.1302 FEET;
THENCE N. 08°22'48" E. A DISTANCE OF 305.736 FEET;
THENCE S. 81°29'56" E. A DISTANCE OF 25.00 FEET;
THENCE STARTING ANGLE OF N 82°39'26" W AND AN ENDING ANGLE OF S 88°51'24" W A CURVE HAVING A CENTRAL ANGLE OF 8°29'11" A RADIUS OF 8,469.37 FEET AND AN ARC DISTANCE OF 1,254.426 FEET, SAID CURVE HAVING A CHORD BEARING OF N 03°05'59" E AND A CHORD DISTANCE OF 1,253.298 FEET;
THENCE S. 89°59'07" E. A DISTANCE OF 25.00 FEET;
THENCE N. 00°00'53" W. A DISTANCE OF 659.245 FEET;
THENCE S. 89°56'35" W. A DISTANCE OF 50.00 FEET;
THENCE N. 00°00'53" W. A DISTANCE OF 687.496 FEET;
THENCE N. 11°15'36" W. A DISTANCE OF 51.147 FEET;
THENCE N. 00°00'53" E. A DISTANCE OF 1,647.88 FEET;
THENCE N. 02°48'49" W. A DISTANCE OF 1,451.11 FEET;
THENCE STARTING ANGLE OF S 36°19'14" W AND AN ENDING ANGLE OF S 87°42'22" W A CURVE HAVING A CENTRAL ANGLE OF 51°23'08" A RADIUS OF 325 FEET AND AN ARC DISTANCE OF 291.479 FEET; SAID CURVE HAVING A CHORD BEARING OF N 27°59'12" W AND A CHORD DISTANCE OF 281.805 FEET;

THENCE N. 52°31'18" W. A DISTANCE OF 481.66 FEET;
THENCE N. 26°24'46" W. A DISTANCE OF 319.092 FEET;
THENCE N. 00°00'37" W. A DISTANCE OF 210.00 FEET;
THENCE N. 50°21'56" W. A DISTANCE OF 392.011 FEET;
THENCE S. 89°59'21" W. A DISTANCE OF 855.6399 FEET;
THENCE S. 00°41'25" W. A DISTANCE OF 5,267.632 FEET;
THENCE S. 06°45'40" E. A DISTANCE OF 177.2613 FEET;
THENCE N. 89°57'46" W. A DISTANCE OF 1,200.8185 FEET;
THENCE N. 89°33'18" W. A DISTANCE OF 117.97 FEET;
THENCE N.00°00'00" E. A DISTANCE OF 911.01 FEET;
THENCE N. 83°56'22" W. A DISTANCE OF 1,485.89 FEET;
THENCE S. 01°11'11" E. A DISTANCE OF 824.727 FEET;
THENCE S. 89°56'35" E. A DISTANCE OF 10.00 FEET;
THENCE S. 01°10'21" E. A DISTANCE OF 1,149.485 FEET;
THENCE S. 88°49'39" W. A DISTANCE OF 5.00 FEET;
THENCE S. 01°14'53" E. A DISTANCE OF 1,350.504 FEET;
THENCE S. 21°47'51" E. A DISTANCE OF 94.532 FEET;BACK TO THE "POINT OF BEGINNING"
SAID AREA CONTAINING 20,993,898.± SQ. FT. OR 481.9536.± AC. MORE OR LESS.

PLUS THE FOLLOWING EXPANSION AREA:

A TRACT OF LAND BEING PART OF THE SOUTH HALF (S/2) OF SECTION 12 AND PART OF SECTION 24, BOTH IN T-20-N, R-13-E, AND PART OF SECTION 7, PART OF THE NORTHWEST QUARTER (NW/4) OF SECTION 8, PART OF SECTIONS 18 AND 19, AND PART OF THE NORTH HALF (N/2) OF SECTION 30, ALL IN T-20-N, R-14-E OF THE INDIAN BASE AND MERIDIAN, TULSA COUNTY, STATE OF OKLAHOMA, ACCORDING TO THE UNITED STATES GOVERNMENT SURVEY THEREOF, SAID TRACT OF LAND BEING MORE PARTICULARLY DESCRIBED AS FOLLOWS, TO-WIT:

COMMENCING AT THE SOUTHEAST CORNER OF SAID SECTION 24; THENCE N 00°01'42" W ALONG THE EASTERLY LINE OF SECTION 24 FOR 795.72' TO THE "POINT OF BEGINNING" OF SAID TRACT OF LAND; THENCE N 89°51'09" W FOR 402.64'; THENCE N 52°46'08" W FOR 155.96'; THENCE N 89°50'51" W FOR 47.63'; THENCE S 50°47'55" W FOR 53.84'; THENCE N 89°51'09" W FOR 2689.25'; THENCE N 06°44'37" E FOR 3799.78'; THENCE S 20°05'09" E FOR 752.76'; THENCE S 15°07'55" E FOR 1348.04'; THENCE S 13°37'09" E FOR 111.50'; THENCE S 13°37'09" E FOR 86.51'; THENCE N 89°17'40" E FOR 779.06'; THENCE S 00°14'39" E FOR 506.20'; THENCE N 89°16'58" E FOR 1420.55'; THENCE N 89°16'57" E FOR 1862.32';

THENCE N 01°23'38" E FOR 568.50'; THENCE N 01°23'38" E FOR 2641.89'; THENCE N 01°23'38" E FOR 265.56'; THENCE N 02°00'16" E FOR 2377.10'; THENCE N 02°00'16" E FOR 482.36'; THENCE N 01°44'33" E FOR 2250.18'; THENCE S 89°46'48" W FOR 2119.17'; THENCE N 89°50'28" W FOR 2640.86'; THENCE N 89°59'30" W FOR 743.73'; THENCE N 47°51'34" E FOR 1004.12'; THENCE N 44°51'58" E FOR 274.90'; THENCE N 44°51'58" E FOR 216.32'; THENCE N 44°51'58" E FOR 209.54'; THENCE N 44°51'57" E FOR 227.35'; THENCE N 44°51'55" E FOR 132.41'; THENCE N 44°51'55" E FOR 289.49'; THENCE S 44°10'04" E FOR 25.08'; THENCE N 43°06'29" E FOR 41.01'; THENCE N 43°06'28" E FOR 164.67'; THENCE N 43°06'28" E FOR 295.82'; THENCE S 89°54'17" E FOR 15.62'; THENCE N 43°06'28" E FOR 502.73'; THENCE N 77°44'56" E FOR 989.54'; THENCE N 77°44'26" E FOR 381.98'; THENCE N 78°27'34" E FOR 477.01' TO A POINT OF CURVE; THENCE ON A TANGENT CURVE TO THE RIGHT WITH A CENTRAL ANGLE OF 11°25'25" AND A RADIUS OF 5629.58' FOR 1122.42' WITH A CHORD BEARING OF N 84°10'17" E AND CHORD DISTANCE OF 1120.56' TO A POINT OF TANGENCY; THENCE N 89°52'59" E ALONG SAID TANGENCY FOR 624.58'; THENCE S 00°15'30" E FOR 25.00'; THENCE N 89°52'59" E FOR 2639.63'; THENCE N 89°53'58" E FOR 61.98' TO A POINT OF NON-TANGENT CURVE; THENCE ON A NON-TANGENT CURVE TO THE LEFT WITH A CENTRAL ANGLE OF 1°14'15" AND A RADIUS OF 8694.40' FOR 187.80' WITH A CHORD BEARING OF S 15°20'57" W AND CHORD DISTANCE OF 187.80'; THENCE S 89°57'15" W FOR 11.60'; THENCE S 89°52'59" W FOR 43.50' TO A POINT OF NON-TANGENT CURVE; THENCE ON A NON-TANGENT CURVE TO THE LEFT WITH A CENTRAL ANGLE OF 0°33'48" AND A RADIUS OF 8744.40' FOR 85.98' WITH A CHORD BEARING OF S 16°12'18" W AND CHORD DISTANCE OF 85.97'; THENCE ON A NON-TANGENT CURVE TO THE LEFT WITH A CENTRAL ANGLE OF 0°11'51" AND A RADIUS OF 8744.40' FOR 30.14' WITH A CHORD BEARING OF S 05°29'47" W AND CHORD DISTANCE OF 30.14'; THENCE ON A NON-TANGENT CURVE TO THE LEFT WITH A CENTRAL ANGLE OF 5°52'28" AND A RADIUS OF 8744.40' FOR 896.55' WITH A CHORD BEARING OF S 11°00'24" W AND CHORD DISTANCE OF 896.16'; THENCE S 09°33'27" W AND NON-TANGENT TO THE PREVIOUS CURVE FOR 454.50'; THENCE S 27°17'27" W FOR 593.20'; THENCE S 46°14'15" W FOR 443.29'; THENCE S 67°50'25" W FOR 482.93'; THENCE S 00°13'12" E FOR 182.82'; THENCE S 89°46'48" W FOR 15.60'; THENCE S 00°13'12" E FOR 137.51'; THENCE S 86°34'02" W FOR 249.91'; THENCE N 88°10'02" W FOR 493.28'; THENCE S 01°50'05" W FOR 1158.17'; THENCE N 88°58'15" E FOR 142.52'; THENCE S 02°08'11" W FOR 3999.44'; THENCE N 89°59'21" W FOR 26.93'; THENCE S 01°51'45" W FOR 5443.32'; THENCE S 05°35'20" E FOR 177.26'; THENCE N 88°47'26" W FOR 1200.82'; THENCE N 88°22'58" W FOR 117.97'; THENCE N 01°10'20" E FOR 911.01'; THENCE N 82°46'02" W FOR 1520.95'; THENCE N 89°51'09" W FOR 62.41' TO THE "POINT OF BEGINNING" OF SAID TRACT OF LAND,

AND

A TRACT OF LAND BEING PART OF LOT 1 IN BLOCK 1 OF "OKLAHOMA HIGHWAY DEPARTMENT ADDITION", AN ADDITION TO THE CITY OF TULSA, TULSA COUNTY, STATE OF OKLAHOMA, ACCORDING TO RECORDED PLAT 3071 THEREOF, SITUATED IN THE SOUTHEAST QUARTER (SE/4) OF SECTION 18, T-20-N, R-14-E, SAID TRACT OF LAND BEING MORE PARTICULARLY DESCRIBED AS FOLLOWS, TO-WIT:

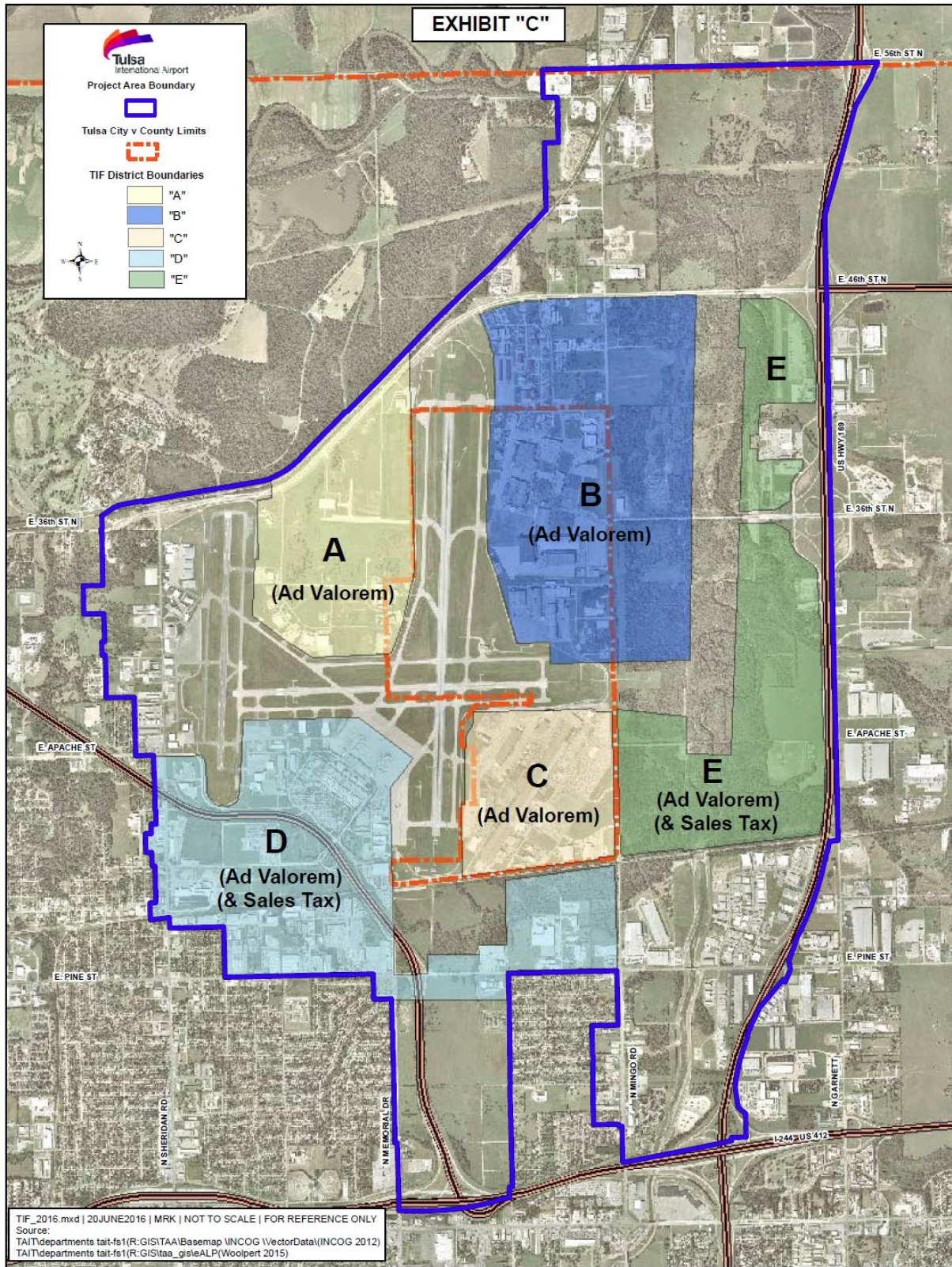
"BEGINNING AT A POINT", SAID POINT BEING THE NORTHEAST CORNER OF SAID LOT 1 AND BEING ON THE NORTHERLY LINE OF SAID SOUTHEAST QUARTER (SE/4); THENCE S 89°53'24" W ALONG THE NORTHERLY LINE OF LOT 1 AND SAID NORTHERLY LINE OF THE SOUTHEAST QUARTER (SE/4) FOR 1316.68'; THENCE S 03°35'25" W FOR 723.47'; THENCE N 89°59'21" W FOR 187.89'; THENCE S 00°19'10" W FOR 320.00'; THENCE S 89°55'53" E FOR 174.08'; THENCE S 03°09'55" W TO A POINT ON A SOUTHERLY LINE OF SAID LOT 1 FOR 279.96'; THENCE N 89°56'52" E ALONG SAID SOUTHERLY LINE FOR 1063.37' TO A SOUTHEASTERLY CORNER OF SAID LOT 1; THENCE S 00°12'46" W ALONG A WESTERLY LINE OF LOT 1 FOR

190.72'; THENCE N 44°14'08" E FOR 473.43' TO A POINT ON THE EASTERLY LINE OF SAID LOT 1; THENCE N 00°00'19" E ALONG SAID EASTERLY LINE FOR 1174.84' TO THE "POINT OF BEGINNING" OF SAID TRACT OF LAND.

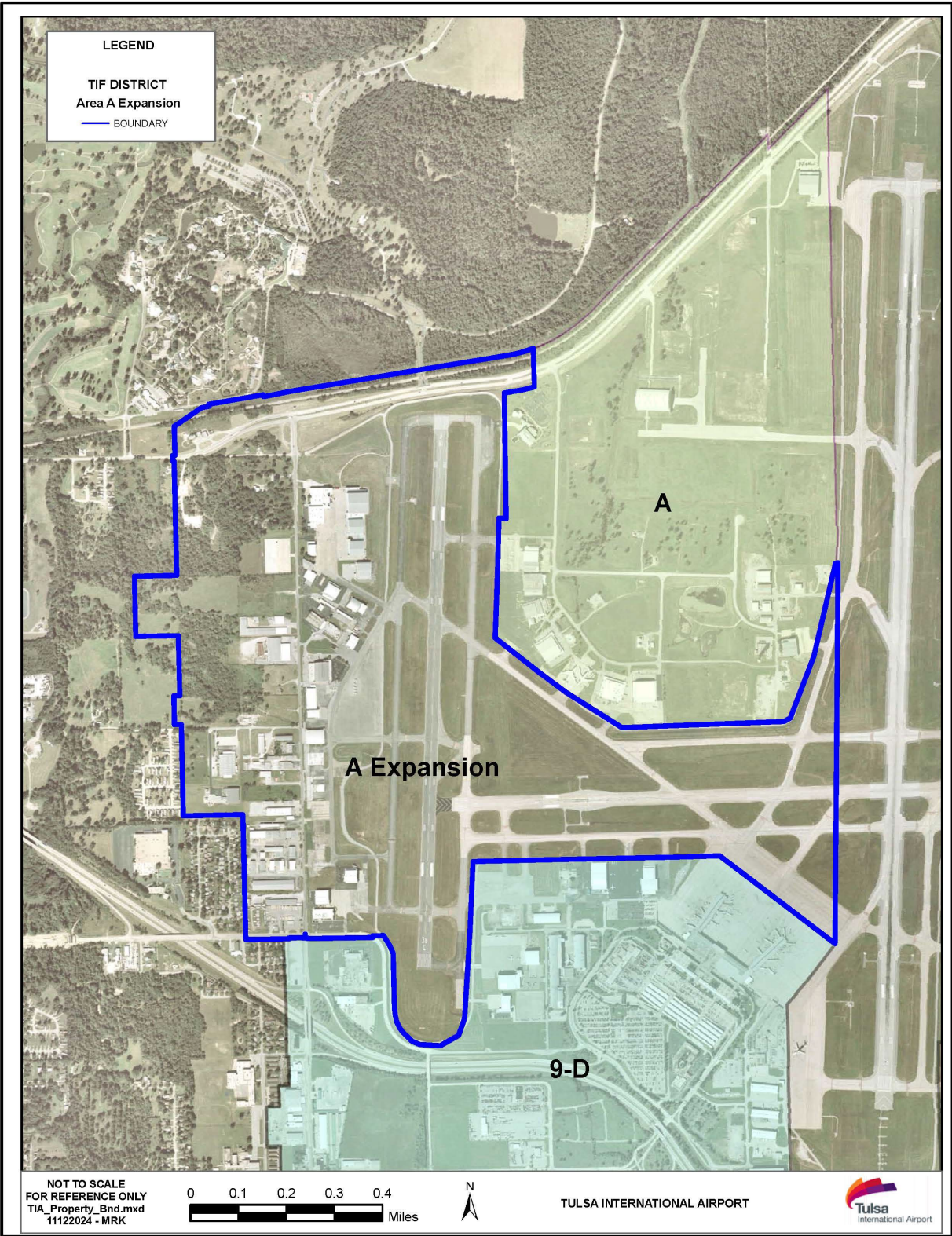
THE ABOVE-DESCRIBED TRACT OF LAND CONTAINS 40,297,587 SQUARE FEET OR 925.1053 ACRES, MORE OR LESS.

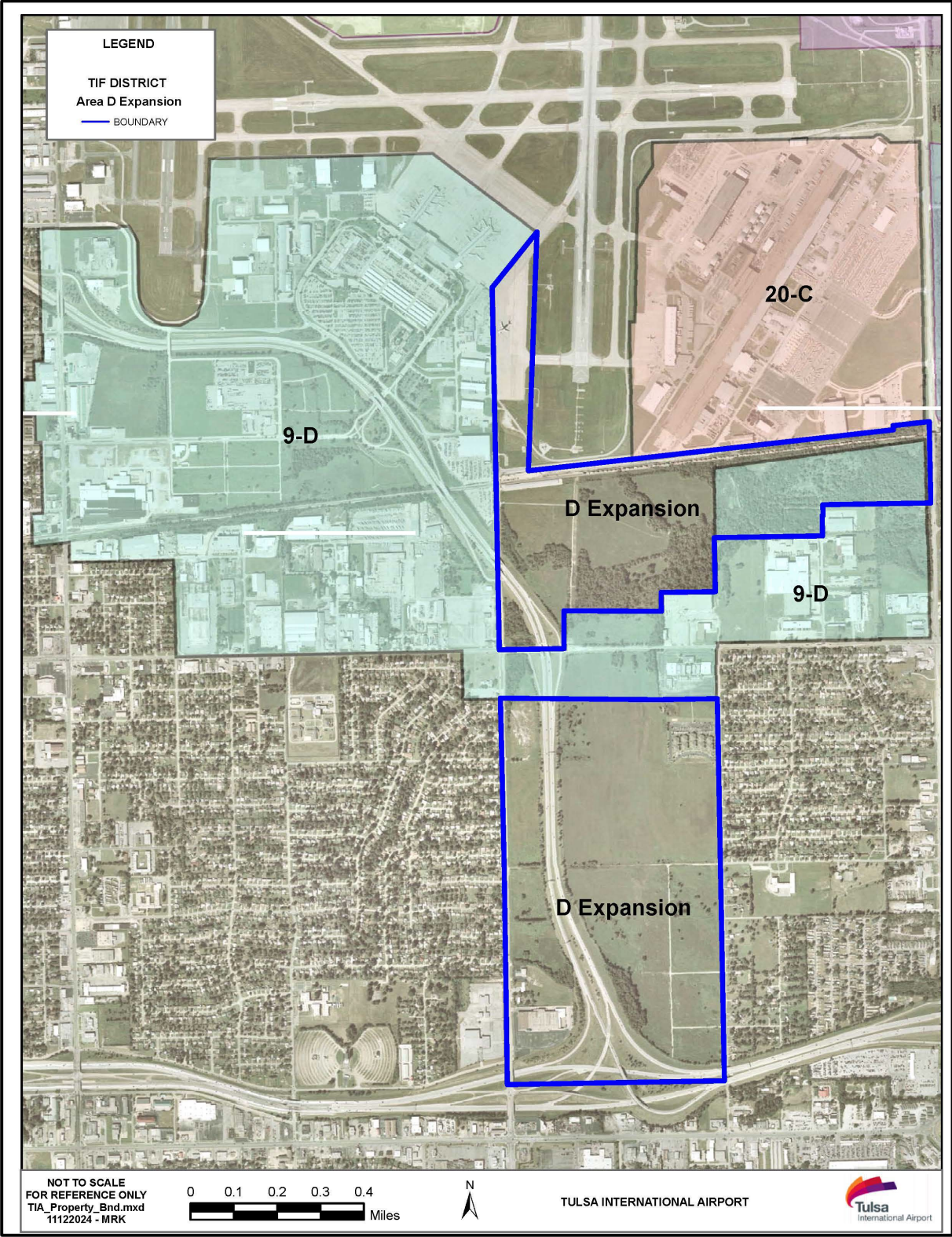
THE BEARINGS USED IN THE ABOVE LEGAL DESCRIPTION ARE BASED ON THE WESTERLY LINE OF SECTION 13, T-20-N, R-13-E HAVING AN ASSUMED, NON-ASTRONOMICAL BEARING OF N 00°00'24" W.

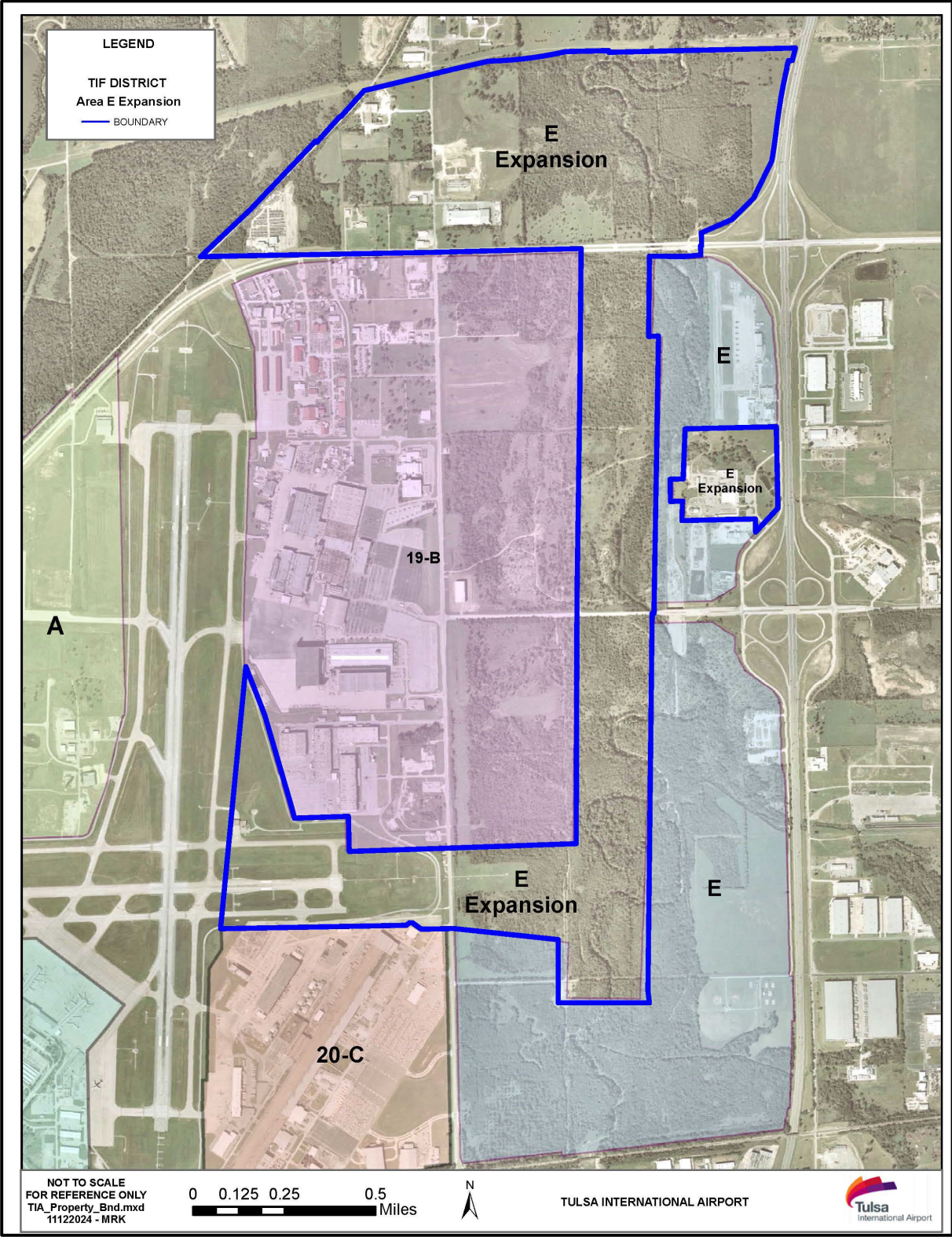
THE ABOVE LEGAL DESCRIPTION WAS PREPARED BY ERIC G. SACK, OKLAHOMA LICENSED PROFESSIONAL LAND SURVEYOR NO. 1545, ON NOVEMBER 5, 2024. (CA NO. 1783)



The map above illustrates the original boundaries of all 5 TIF districts created by this Project Plan. The pages that follow illustrate the areas where TIF districts "A," "D," and "E" are expanded.







LEGEND
TIF DISTRICT
Area E Expansion
— BOUNDARY

E Expansion

E

E Expansion

19-B

A

E Expansion

E

20-C

NOT TO SCALE
FOR REFERENCE ONLY
TIA_Property_Bnd.mxd
11122024 - MRK

0 0.125 0.25 0.5 Miles



TULSA INTERNATIONAL AIRPORT



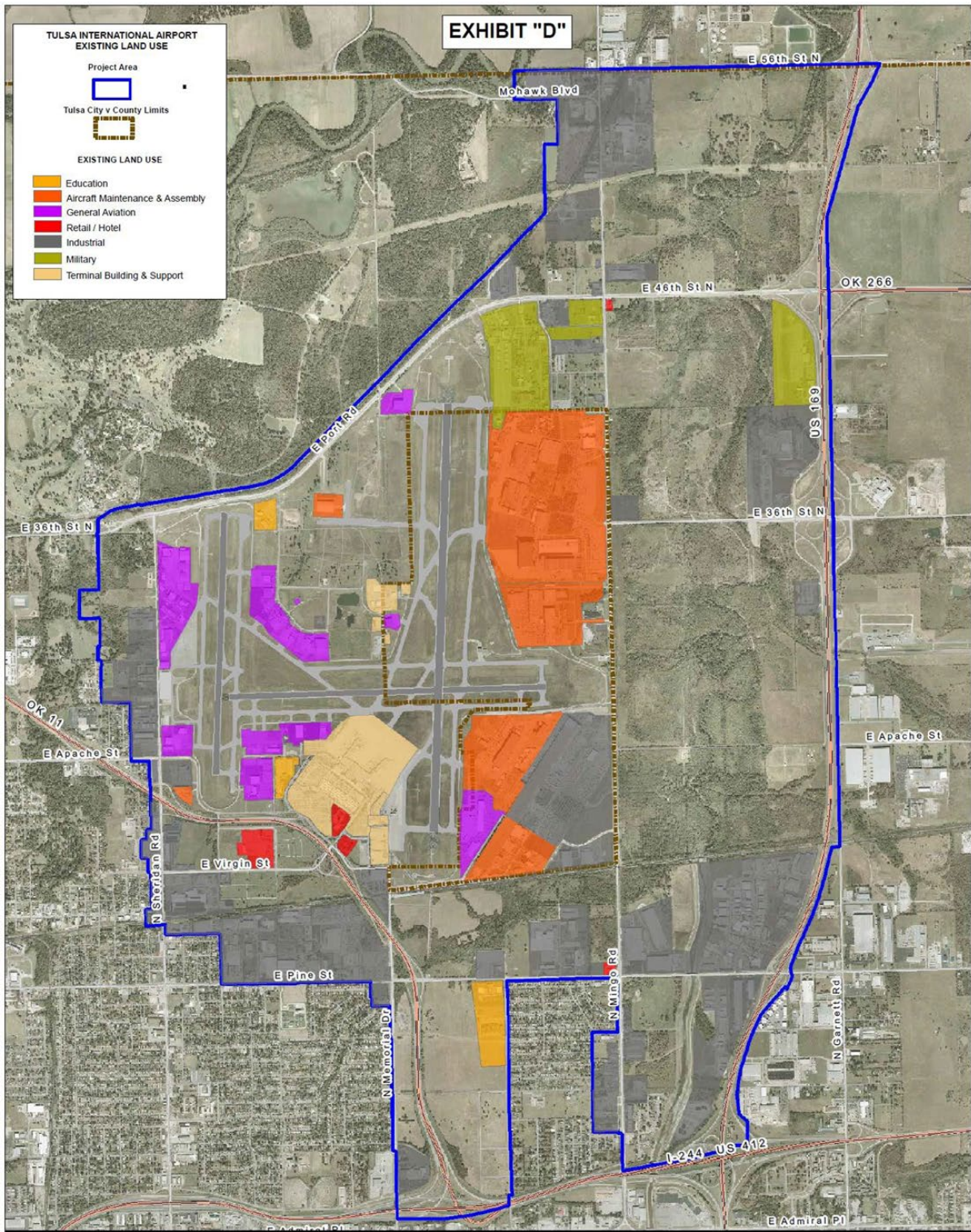
EXHIBIT "D"

**TULSA INTERNATIONAL AIRPORT
EXISTING LAND USE**

Project Area
Tulsa City v County Limits

EXISTING LAND USE

- Education
- Aircraft Maintenance & Assembly
- General Aviation
- Retail / Hotel
- Industrial
- Military
- Terminal Building & Support



TIF_2014.mxd | 17 OCT 2014 | MRK | NOT TO SCALE | FOR REFERENCE ONLY
Source:
TAIT\departments\tait-fs1\GIS\TAI\Basemap\INCOG-CNTY\VectorData\INCOG 2012
TAIT\departments\tait-fs1\GIS\taaa_gis\ALP\Woolpert 2010

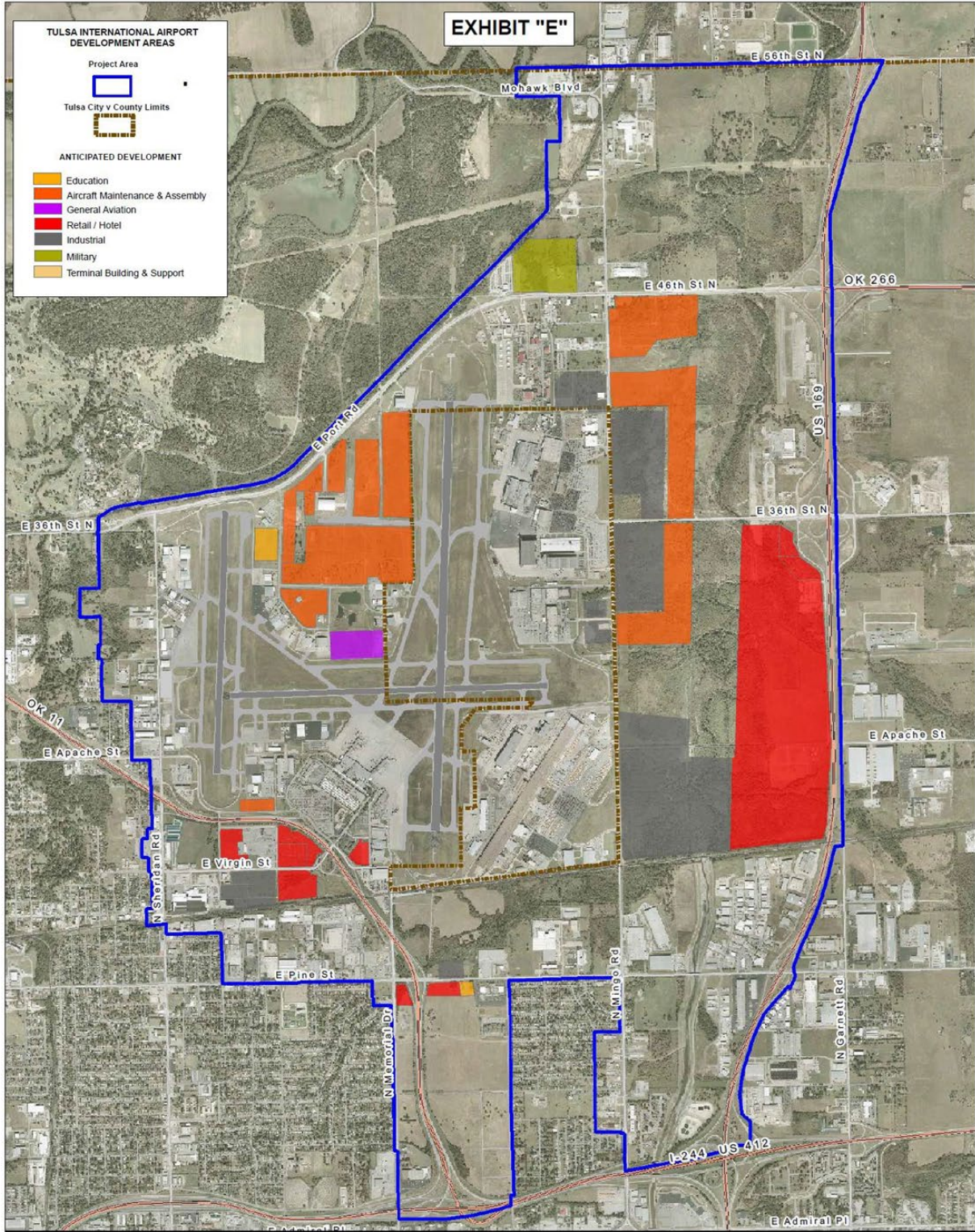
EXHIBIT "E"

TULSA INTERNATIONAL AIRPORT DEVELOPMENT AREAS

Project Area
Tulsa City v County Limits

ANTICIPATED DEVELOPMENT

- Education
- Aircraft Maintenance & Assembly
- General Aviation
- Retail / Hotel
- Industrial
- Military
- Terminal Building & Support



TIF_2014.mxd | 17 OCT 2014 | MRK | NOT TO SCALE | FOR REFERENCE ONLY
Source:
TAIT\departments\tait-fs1\I-R-GIS\TAI\Bases\map\INCOG-CNTY\VectorData\INCOG 2012
TAIT\departments\tait-fs1\I-R-GIS\tae_gis\ALP\Woolpert 2010